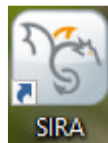


Installation of the SIRA Windows Client

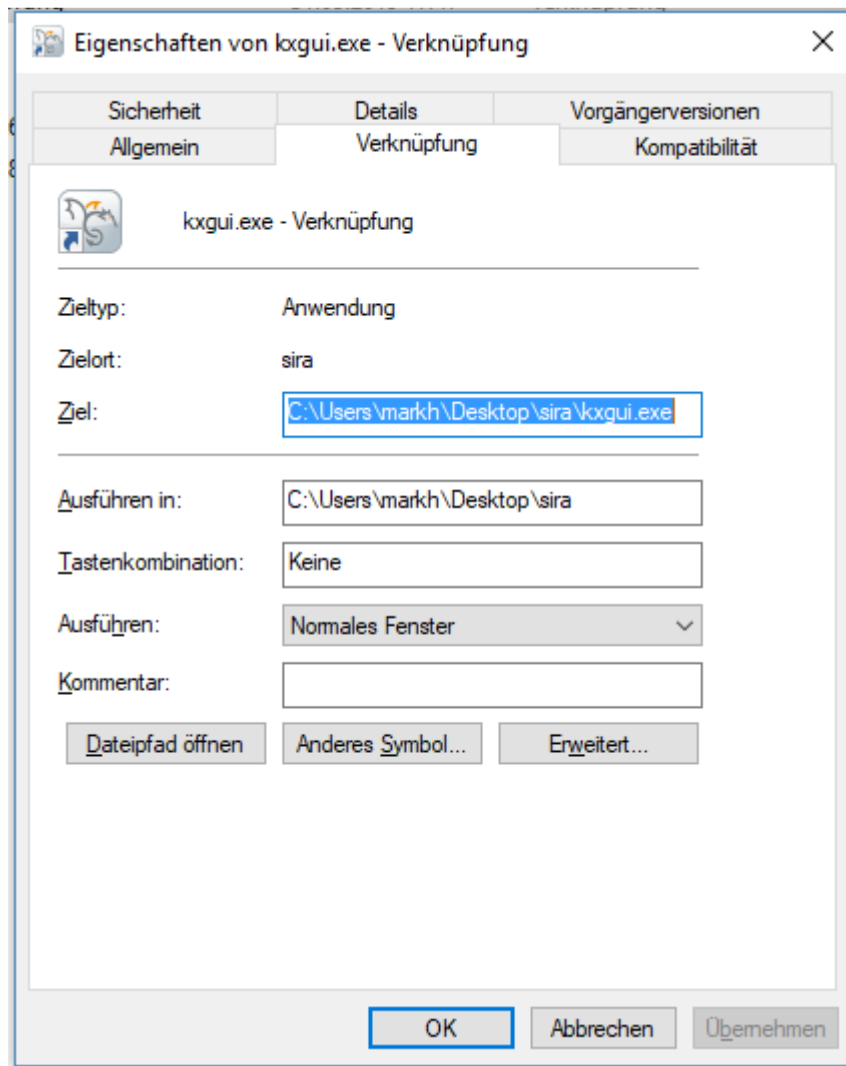
Please unzip the SIRA - Client.ZIP file to your desktop (or any other directory)!

Open the directory „SIRA – Client“ and create a link to kxgui.exe.

Move this link straight onto your desktop and rename it to “SIRA”..



Now open the properties window of that link with a right mouse click .



Copy the following string into the „Target“ line „...\\kxgui.exe “ : (N.B. there is a blank right after kxgui.exe !)

/host 212.62.199.116 /port 4443 /ssl false /username guest /password guest /portid 1 /portname "Port 1"

Done!

Close the properties window and start the session via double click.

You will be connected to the SIRA encoder located at UHSE HQ in Oberteuringen/Germany!

Connection:

Of course, best performance can be achieved with reasonable WAN interface (>16Mbps).
Ideally FTTH or any dark fiber connections!

Despite having sufficient bandwidth protocol conversion via DSL lines or WLAN may impact the performance and latency significantly!

There is also a major performance difference using the SIRA User Station or the Windows Client compared to just a Browser-Session! <https://212.62.199.116:4443>

Enjoy testing!

Any Questions:

Mark Hempel

Head of Product Management

IHSE GmbH

Benzstr. 1

88094 Oberteuringen

+49 172 786 3321

Using the SIRA Windows Client

IMPORTANT: The Client does not require an installation routine! No Admin rights are required! – For accessing the IHSE based SIRA unit via Internet only TCP/IP Ports 80 and 4443 are required.

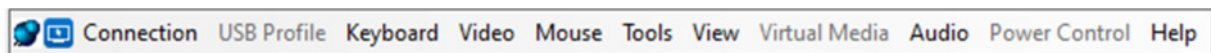
Connections to other SIRA encoders require corresponding changes of the names and IP settings!

DEFAULT:

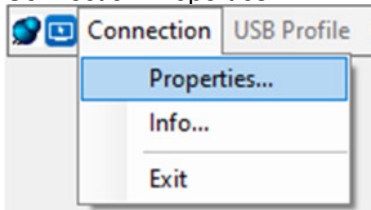
"\\Directory of unzipped SIRA Resource Files\kxgui.exe" /host 192.168.100.88 /port 443 /ssl false /username admin /password admin /portid 1 /portname "Port 1"

After starting the session:

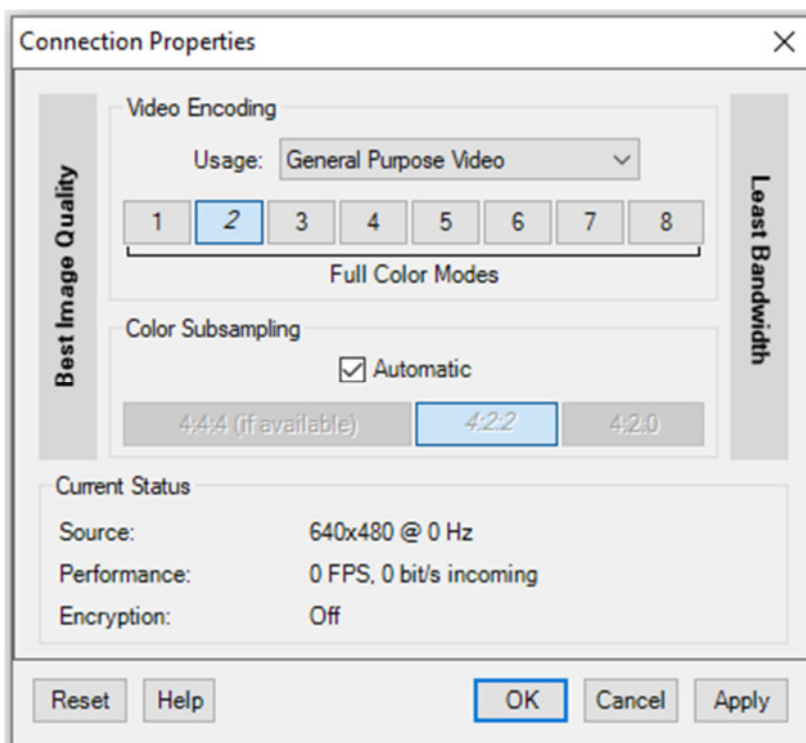
The Client offers different modes of operation. These are available via the Dock located at the upper edge of the screen.



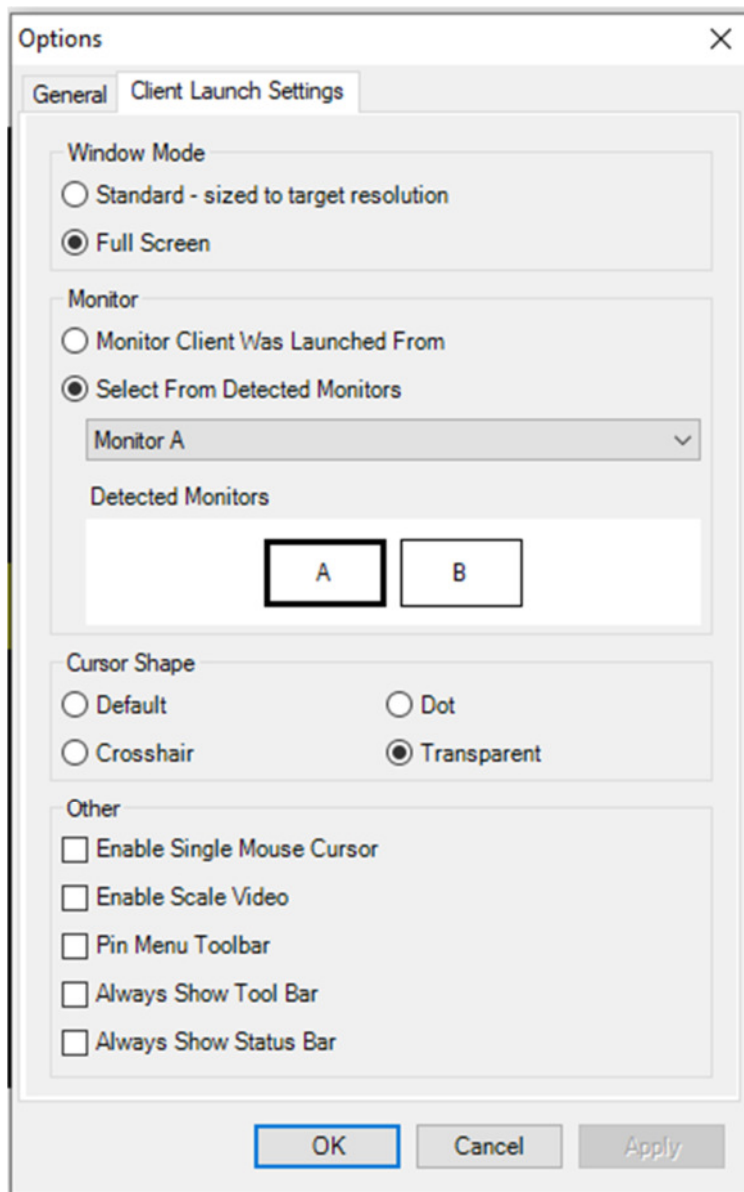
Connection Properties



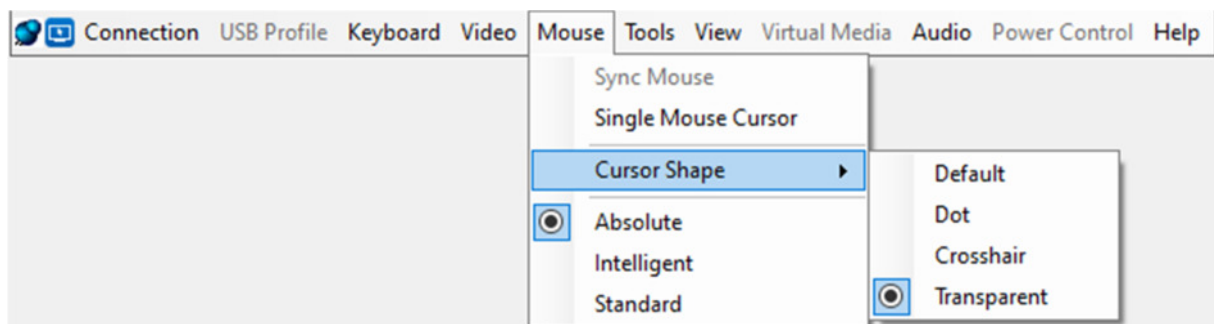
allow setting up the encoders image quality and parameters. Additionally it shows the current signal details such as Framerate and used transmission bandwidth.



Menu *Tools—Options* shows the clients starting parameter settings within the tab „Client Launch Settings“ and allows their configuration:



Unter dem Menüpunkt *Mouse* befinden sich die Einstellmöglichkeiten der Mausbehandlung und deren Ansicht



Wichtige Hotkeys außerhalb des Docks sind:

LCRTL-LALT-Q Schließen der Client-Session

LCRTL-LALT-O Toggles between Singlemouse mode and normal mouse mode

LCTRL-LALT-M Toggles between FullScreen mode and Window mode

LCTRL-LALT-S Toggles Imagescaling

These hotkeys can be configured using the *Tools-Options* Tab „General“.