

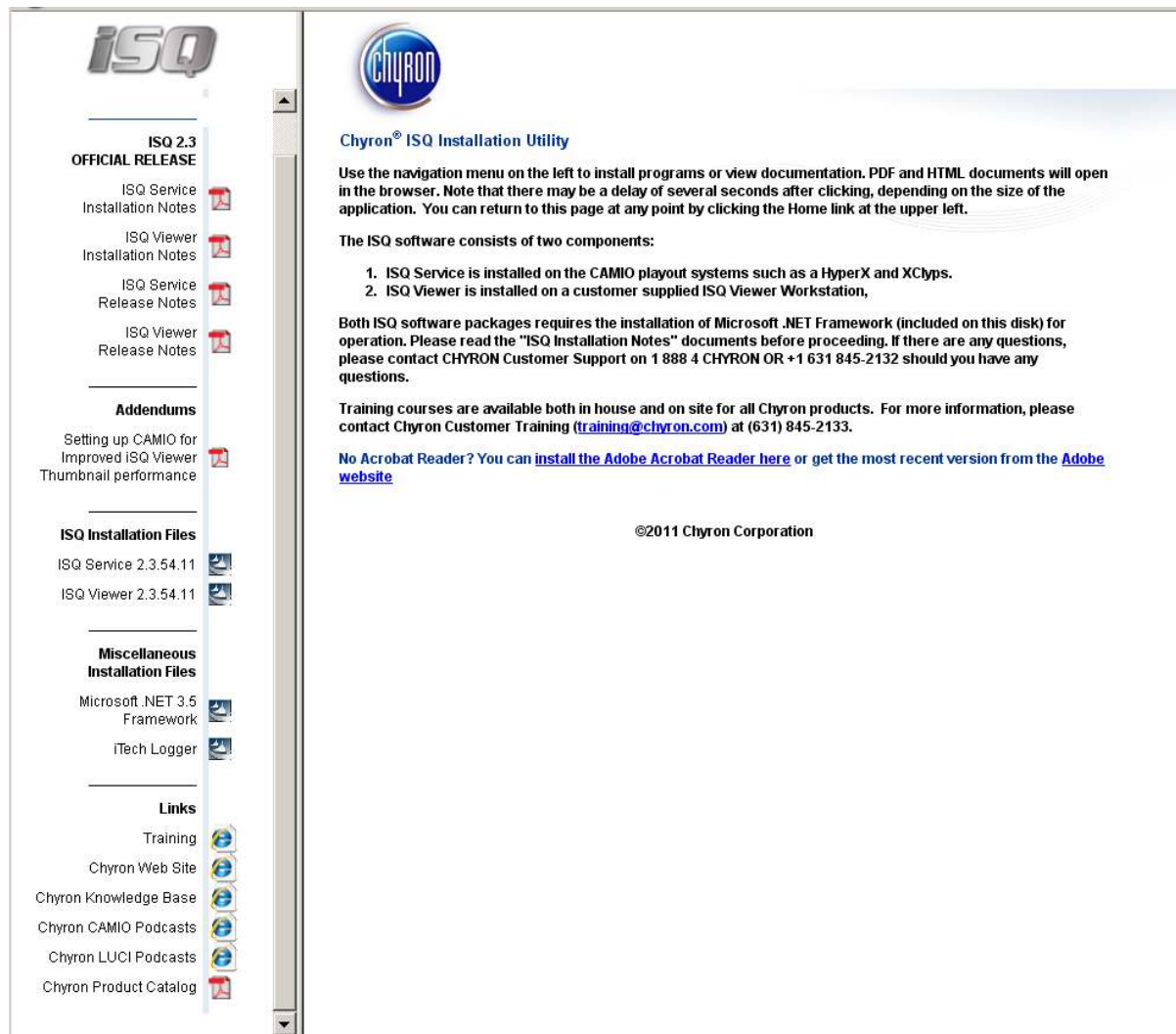


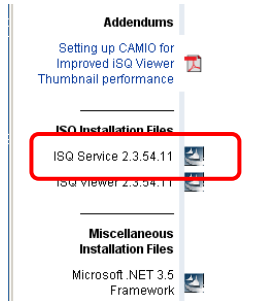
ISQ 2.3 Service Installation Notes



Installing the iSQ Service from the supplied CD

The provided installation disk contains software needed for installation or upgrade to ISQ. The initial start up screen provides shortcuts to software and documentation.





You can launch the iSQ Service Installer from the supplied disk or from the location where the software was downloaded from the Chyron website. Click on the item iSQ Service, located in the navigation area on the left-side column of the webpage, to launch the self-extracting archive.



NOTE: If this is the first time ISQ Service is being installed on a particular machine it may require the installation of Microsoft's dotNet Framework and/or iTech's Logging software. You will be prompted by the ISQ installer if these are required and these two components can be found on the installer disk.

Installation of the Microsoft .Net Framework (if required)

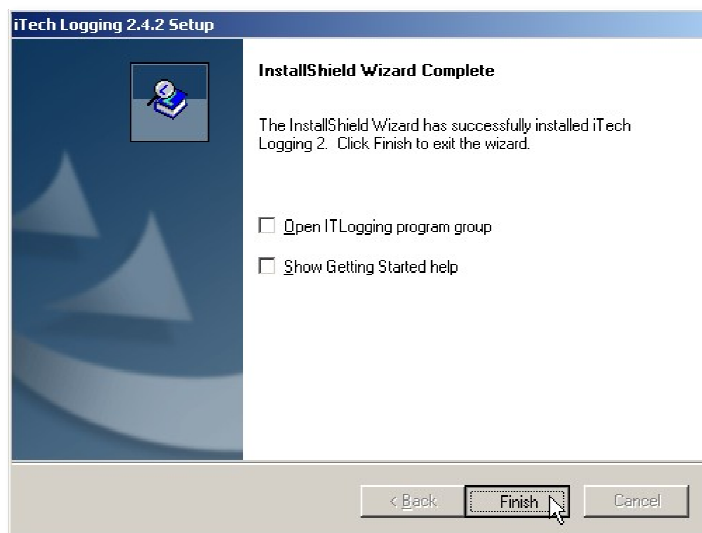
1. Click on the provided installation link under Miscellaneous Installation Files. Proceed with the installation, selecting all default options as they appear in the dialog boxes.

Installation of the iTech Logging Application (if required)

1. Once the .NET Framework installation has completed, you can begin to install the iTech Logging application using an install wizard provided on the installation disk. Proceed with the installation, selecting all default options as they appear in the dialog boxes.
2. At one point in the installation, the iTech Logging Tool Install Wizard will prompt for Customer Information and a serial number. Your ISQ Service License entitles you to one installation of the iTech Logging tool for the purpose of gathering information from iSQ Viewer. Use the following Serial Number: **E5EEF3-F2DFD5-C8CF9B-9E9A9E-DFF401** and provide the proper customer information in the User and Company Name field. The selection of "install the application for:" should be set to: **Anyone who uses this computer (all users)**.
3. The iTech logging application wizard will continue by requesting the desired language for displaying the license. Choose either English or German.
4. Carefully read the license agreement and click on the **I Accept** button to continue if you agree.
5. The iTech Logging application will prompt for the destination to install. The Default path in C:\Program Files\iTech Logging 2\ should be used.



6. Tech will prompt for the preferred setup type to use. Select **Complete including the .NET related parts.**
7. Proceed with the installation selecting all default options and folder paths.
8. iTech Logging Application wizard may prompt that the iSQ Extractor application is open or currently in use. Click on the **Ignore** button to continue.
9. Once the iTech Logging application has completed the installation. The wizard will prompt to display
 - ☒ Open IT Logging Program Group
 - ☒ Show Getting Started Helpat this time, **deselect** both items and click on the **Finish** button to continue.





Installation of the iSQ Service Application

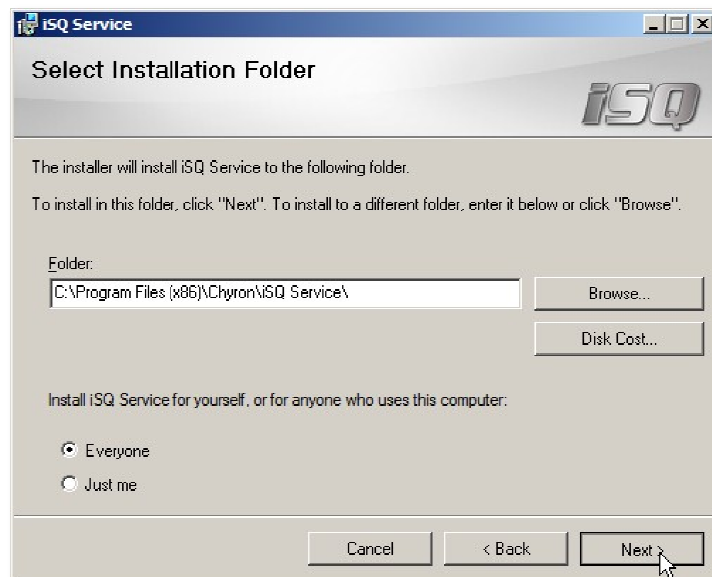
1. The iSQ Service Setup Wizard will appear to indicate that the iSQ Service application will be installed on the computer. Click on the **Next** button to continue.



2. The iSQ Service Setup Wizard will prompt for a location to install the iSQ Service application. The default location of *C:\Program Files\Chyron\iSQ (C:\Program Files (x86)\Chyron\iSQ for 64-bit OS installations)Service* should be used.

For the radio box choice of *Install iSQ Service for yourself, or for EVERYONE who used this computer*.

Select **Everyone**. Click on the **Next** Button to continue.

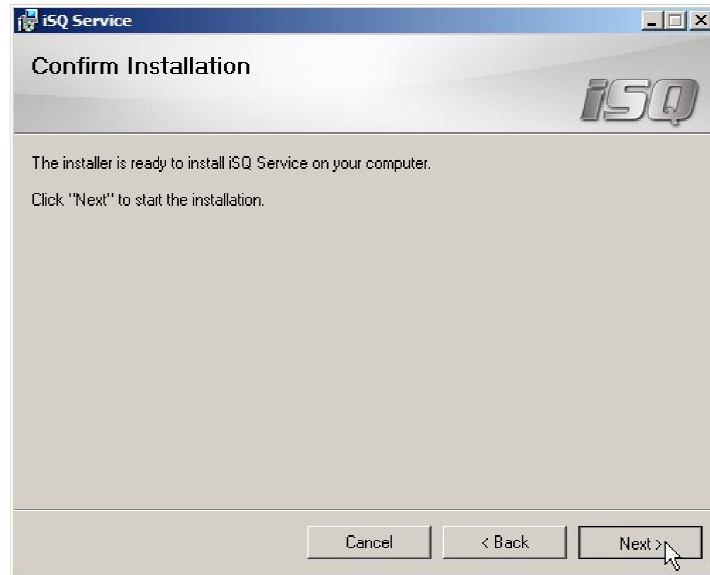




ISQ 2.3 Service Installation Notes



3. The iSQ Service Setup Wizard will display a confirm dialog to allow the user to cancel out of the installation before the actual installation occurs. Click on the **Next** button to continue.



4. The iSQ Service Setup Wizard will display the Installation Complete dialog to inform the user all installation has been completed. Click on the **Close** button to continue.

