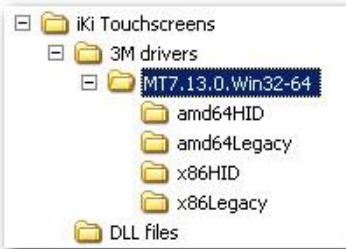


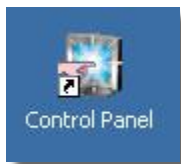


INSTALLING 3M MICROTOUCH HARDWARE SUPPORT

- 1) Double click on the **Setup.exe** file in the folder **MT7.13.0.Win32-64**

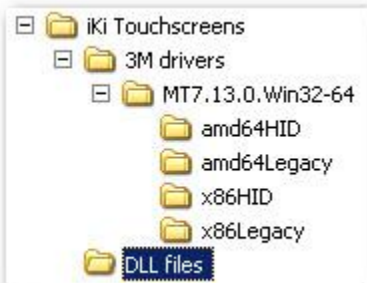


This will install the 3M drivers on the system and create a **Control Panel**

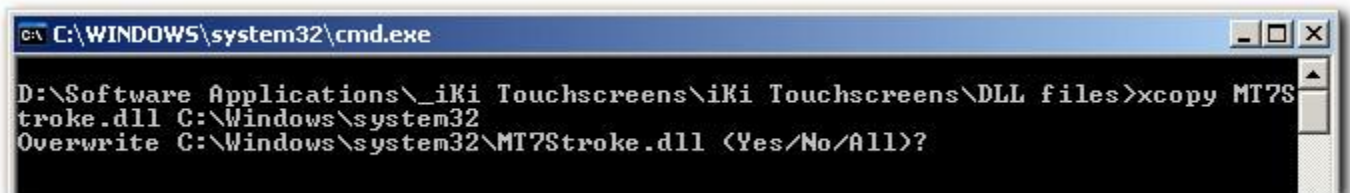


icon on the Desktop

- 2) Next you have to install the Dynamic Link Libraries (DLL's) to the correct Windows folder on the system. To do this, select the **DLL files** folder and Double Click on the **SetupDLL.bat** file.



If prompted, select **Yes** to overwrite any existing files.

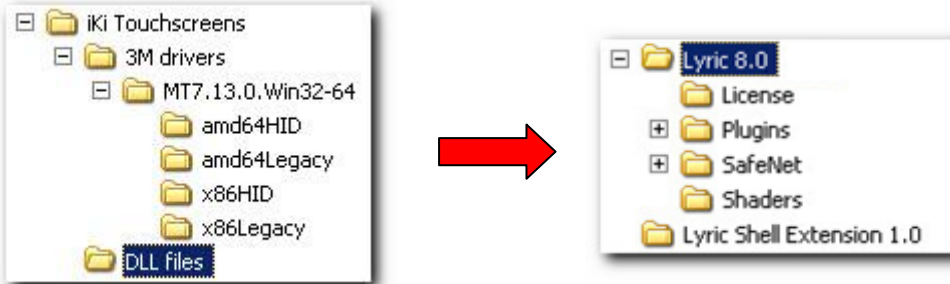


3)



INSTALLING 3M MICROTOUCH HARDWARE SUPPORT

- 4) Finally, copy the file, **testtouch.xml** from the **DLL files** folder to the Lyric Executable folder



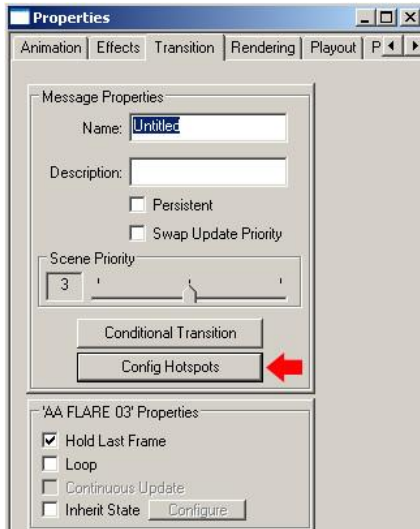
Once this is done, please follow the instructions from the [iKi touchscreen calibration instructions.doc](#)

DRAFT

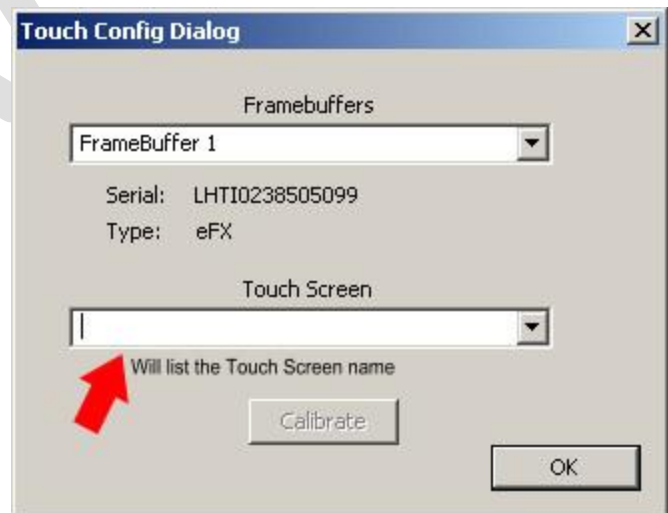
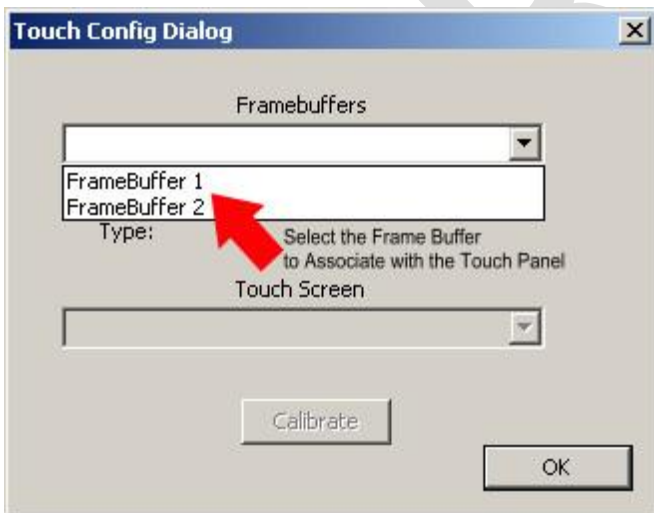


INSTALLING 3M MICROTOUCH HARDWARE SUPPORT

Once the drivers are installed, you should then **Associate** a Frame Buffer with the 3M Touch Overlay. From within Lyric, select Config Hotspots ...



This will then open up a dialogue that will allow you to calibrate and select a Frame Buffer to associate with the 3M Touch Screen overlay.



Once the Frame Buffer has been associated with the 3M Touch Panel Overlay, click on the Calibrate button and follow the on-screen prompts for panel calibration.