



# Dynam-EC

## Quick Start Guide

The following Quick Start Guide:

- Describes how to install your Dynam-EC software.
- Provides a quick reference to the Dynam-EC screen.

For detailed information about installing, starting and using Dynam-EC, see the **Dynam-EC User Guide**.

### 1.1 Before installing

Dynam-EC is supported by Microsoft Windows 7 (32-bit and 64-bit), Microsoft Windows 8.1 (32-bit and 64-bit), Microsoft Windows 10 (32-bit and 64-bit), Microsoft Windows Server 2008 R2 (64-bit) and Microsoft Windows Server 2012 R2 (64-bit).

If you are installing Dynam-EC as an update to an existing Dynam-EC installation, you must first uninstall your existing version of Dynam-EC. Ensure that you save your Dynam-EC layouts project files (\*.ccr files) and all relevant EHX system configurations (\*.hxn files)


### 1.2 Installing Dynam-EC

To install Dynam-EC on your PC:

1. Insert the CD-ROM into the PC. Navigate to the CD-ROM and click the relevant \*.exe file for your machine. Click **either**:
  - **PMSetup**. For installing Dynam-EC.
  - **EHXPMSetup**. For installing EHX Configuration Software and Dynam-EC.
2. When the **Setup** wizard has loaded, the **License Agreement** dialog is displayed. Use the internal scroll bar to review the agreement. To continue with the installation, click **I Agree**.
3. The **Choose Install Location** dialog is displayed. The default location is **Program Files > ClearCom** on the C Drive. To select a different location, click **Browse**. To continue, click **Next**.

4. The **Choose Start Menu Folder** dialog is displayed. The default Start Menu folder is **Clear-Com\ Dynam-EC**. To select an alternative folder **either**:
  - Select from the list of existing Start Menu folders. Use the dialog scroll bar to navigate the list.
  - Enter a name into the selection field to create a new folder.

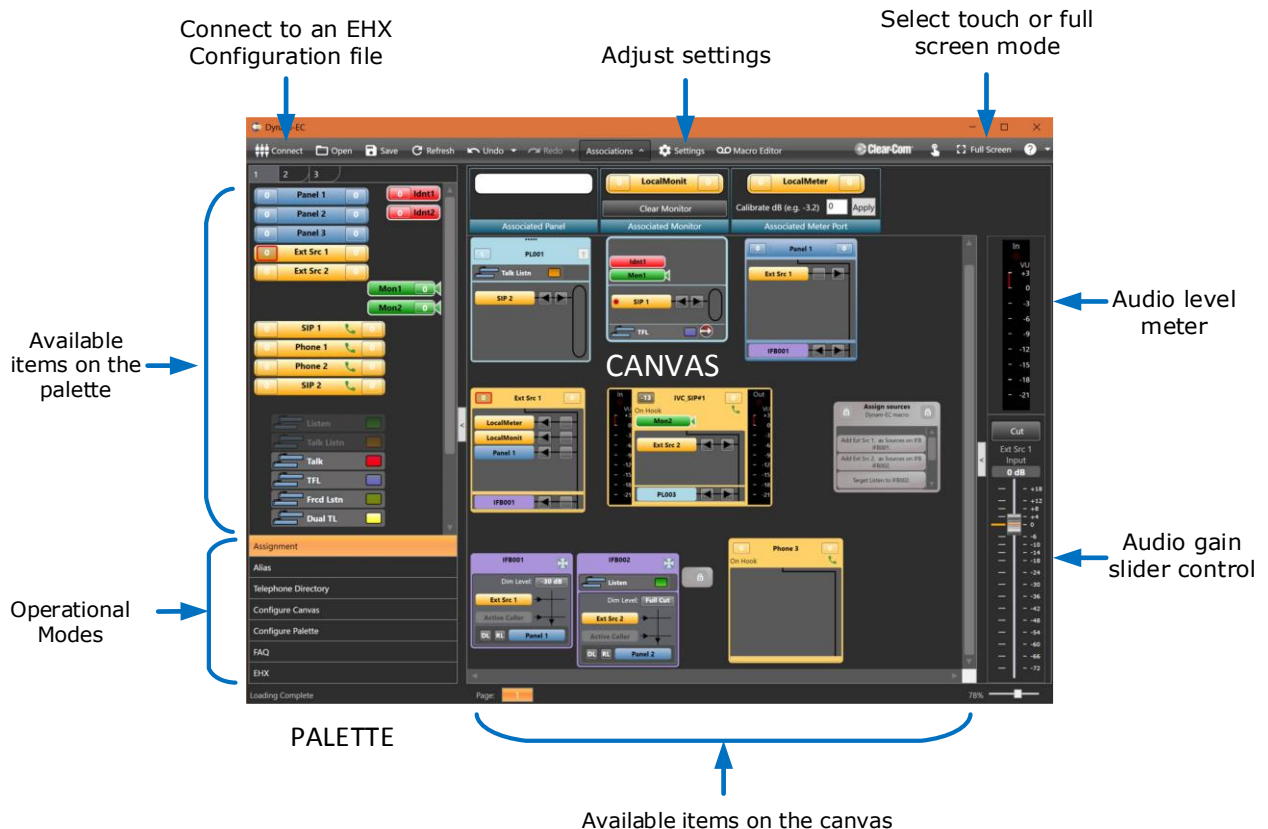
To prevent the creation of shortcuts, select **Do not create shortcuts**. Click **Install**.

5. Dynam-EC starts to install. During installation, an installation progress bar is displayed [  ]. For more detailed information about the progress of the installation, click **Show Details**.

When the installation is complete, click **Close**.

**Note:** On installing Dynam-EC, a firewall dialog may be displayed asking if Windows should **Block** or **Unblock** Dynam-EC. Select **Unblock Dynam-EC**.

## 1.3 Quick reference to the Dynam-EC screen



Dynam-EC Quick Start Guide. PN: 399G233 Rev A

01 August 2017

Copyright © 2017 HME Clear-Com Ltd. All rights reserved.