

XLR-7M Option

Fitting Instructions

Fitting an XLR-7M Headset Connector Assembly

Fitting Instructions for XLR-7M PCB Assembly

These instructions are for fitting an XLR-7M connector to 1 RU, 2 RU rackmount and desktop V-Series panels that are already fitted with male XLR-4M headset connectors. They do not apply to panels fitted with female headset connectors.

Converting the XLR-4M to XLR-7M requires the following items:

- 1 x XLR-7M Headset Connector Assembly part no. 770129Z
- 1 x XLR-7M fitting instructions part no. 810405Z (this document)

Tools Required

- 1 x No. 1 Pozidrive screwdriver
- 1 x electricians flat blade screwdriver (Approximately 3mm tip width)
- 1 x 5mm nut spinner

Fitting the XLR-7M Headset Connector Assembly to Rack Mount Panels

Before fitting the XLR-7M Headset Connector Assembly the panel must be completely disconnected and removed from any rack or console. Place the panel on a clear workspace suitable for antistatic precautions.

Step 1

The power supply should be removed from the cradle at the back of the panel if it has been fitted there (see Figure 1). If it is not fitted in the cradle proceed to step 2.



Figure 1: Power Supply in Cradle on Rack Mount Panel

Unlock the power connector from the panel by turning the outer ring anticlockwise then pulling the connector. Remove the power supply block by pulling it out of the rear of the cradle (Figure 2).



Figure 2: Panel with Power Supply Removed

Step 2

The next step is to remove the four countersunk screws and four panhead screw and washer assemblies holding the lid on. The countersunk screws are located on the top of the lid, two of the panhead screw and washer assemblies

are located on the rear of the panel and one at each end of the panel (Figure 3). Ensure that all the screws are retained for refitting the lid.

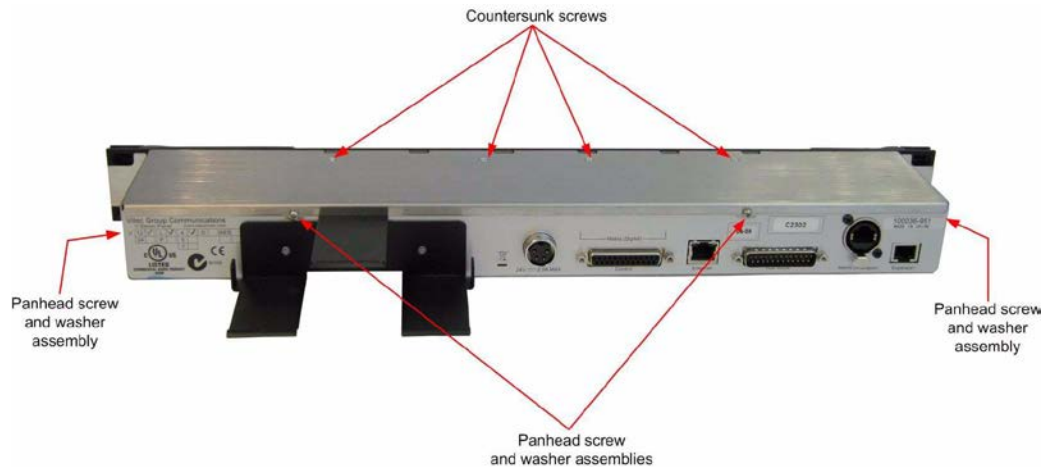


Figure 3: Remove Screws from Panel Lid

Remove the lid from the panel.

Step 3

If the panel is a 1-RU panel then the front panel assembly must be removed to gain access to change the headset connector. If the panel is a 2-RU panel then the front panel assembly need not be removed.

If the front panel does not need to be removed omit steps 4 and 5.

Step 4

Remove the 2 encoder knobs from the Main and Aux level controls. These simply pull off the shafts.

Remove the countersunk screws from the rear of the left and right mounting ears.



Figure 4: Mounting Ears on 1-RU Panel

Step 5

Remove the four countersunk screws from the bottom of the chassis (located along the bottom front edge).

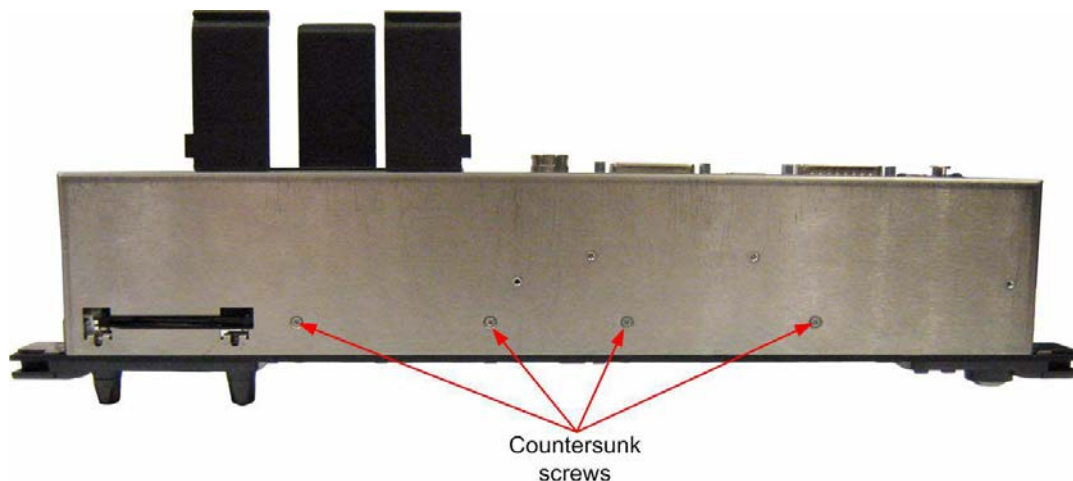


Figure 5: Screws on Bottom of Chassis

Pull the front panel assembly away from the chassis to give access to the connectors and cables.

Step 6

Disconnect the microphone and main board connection cables from the Front Panel Audio Card. Disconnect the cable from the Headset Connector Assembly.

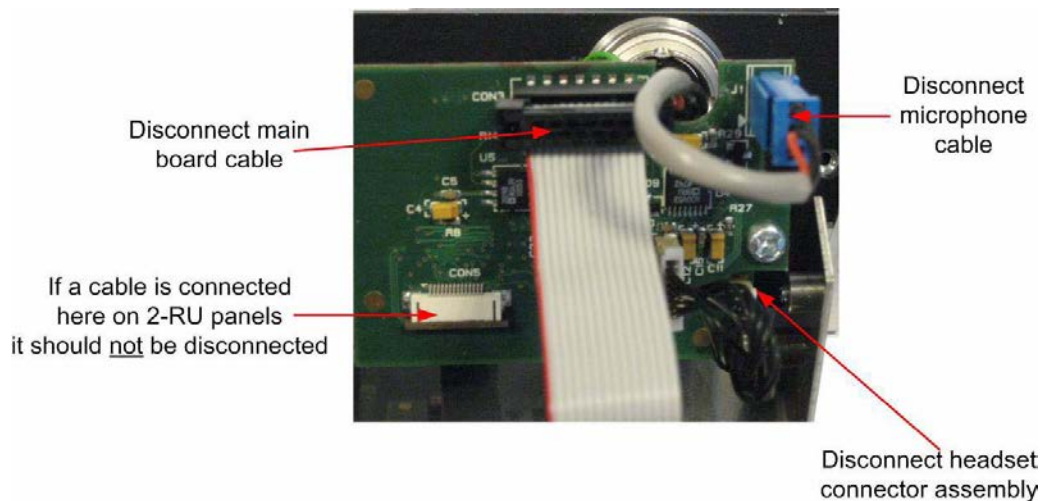
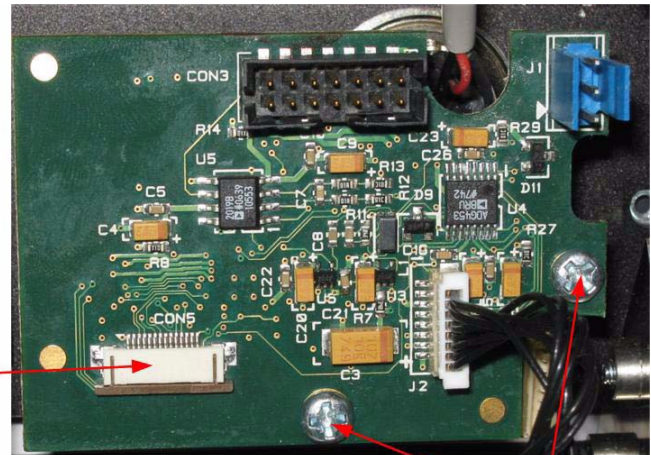


Figure 6: Cable Removal from Audio Card

If a cable is connected
here on 2-RU panels
it should not be disconnected



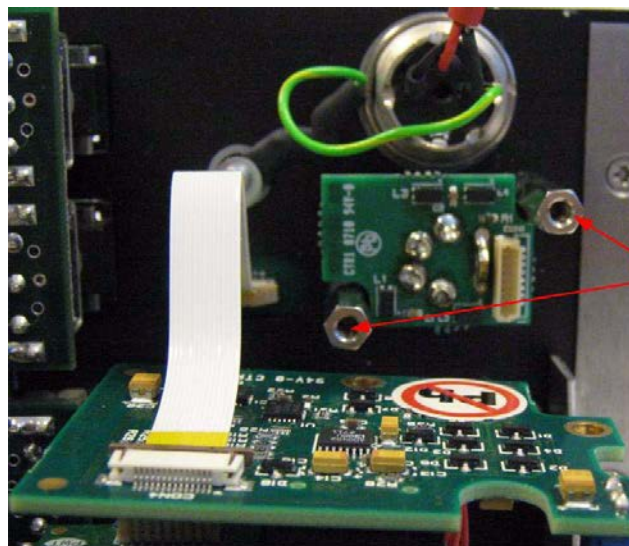
Remove
Pozidrive screws

Figure 7: Audio Card with Cables Removed

Remove the 2 Pozidrive screws from the Front Panel Audio Card and gently pull the audio card away from the Headset Connector Assembly.

Step 7

Remove the 2 hex pillars securing the Headset Connector Assembly to the front panel assembly using the 5mm nut spinner.



Remove
hex pillars

Figure 8: Audio Card Removed from Headset Connector Assembly

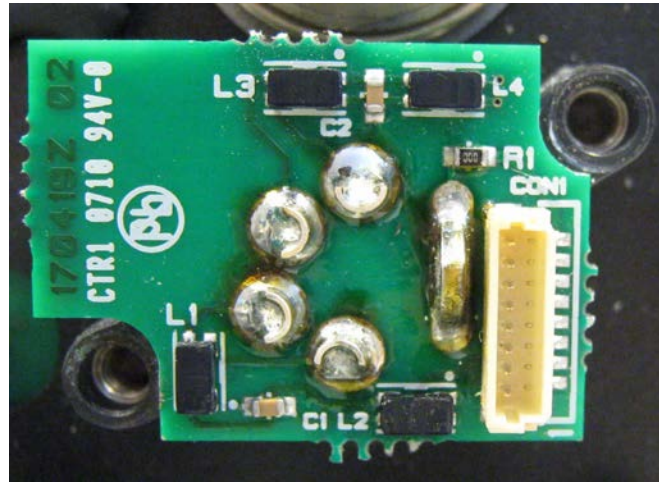


Figure 9: Headset Connector Assembly with Hex Pillars Removed

Step 8

Remove the existing XLR-4M Headset Connector Assembly from the front panel assembly.

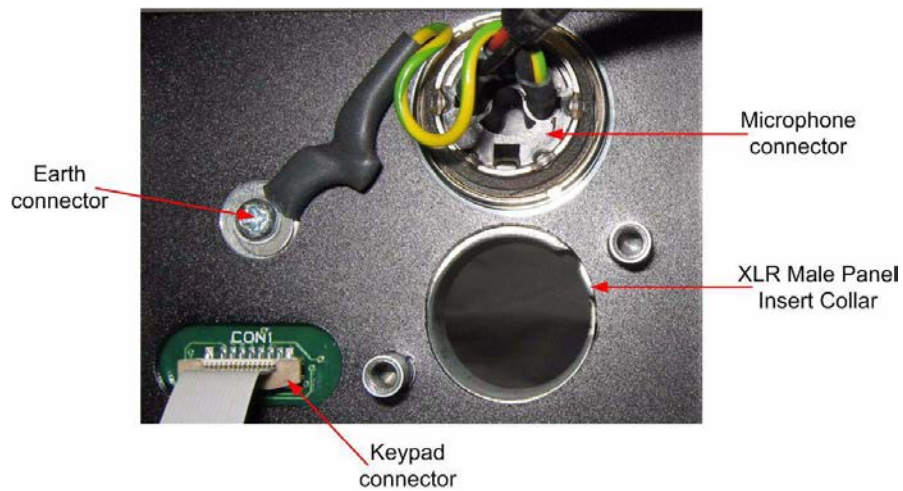


Figure 10: Panel with Headset Connector Assembly Removed

Step 9

Before fitting the XLR-7M Headset Connector Assembly it should be checked to ensure that the PCB is aligned so that the hex pillars will clear the PCB when they are in place.

If the assembly requires adjustment please refer to Appendix A.

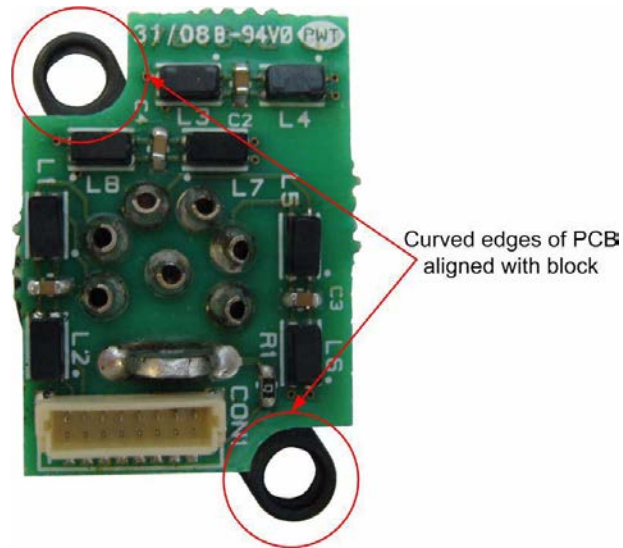


Figure 11: XLR-7M Assembly Alignment

Fit the XLR-7M Headset Connector Assembly onto the front panel as shown in Figure 12.



Figure 12: Fit the XLR-7M Headset Connector Assembly

Step 10

Fit the hex pillar on the left only as shown in Figure 13 below.
Move the loose assembly to allow the pillar to be tightened.

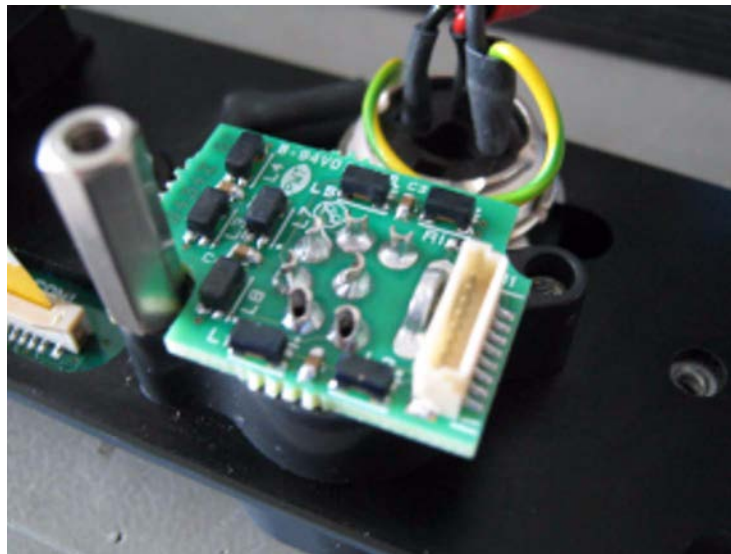


Figure 13: Fit Left Pillar Beside Assembly

Step 11

Fit and tighten the pillar on the right as shown in Figure 14 below.

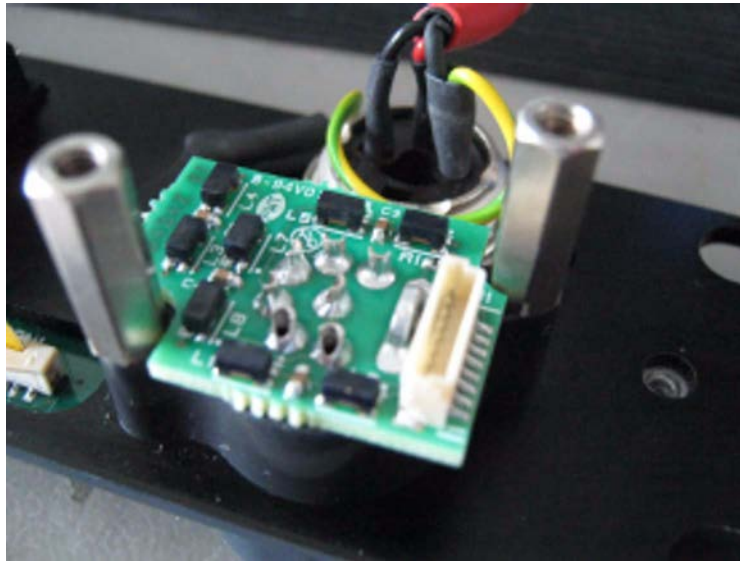


Figure 14: Fit Right Pillar Beside Assembly

Step 12

If the grub screw is loose turn the grub screw clockwise as shown in Figure 15 below until the assembly is rigid.

Warning: The grub screw in the XLR connector has a left hand thread; when this is turned clockwise the grub screw will move out of the connector and lock with the black plastic moulding. Do not over tighten the grub screw as this is very difficult to refit once the PCB is assembled.

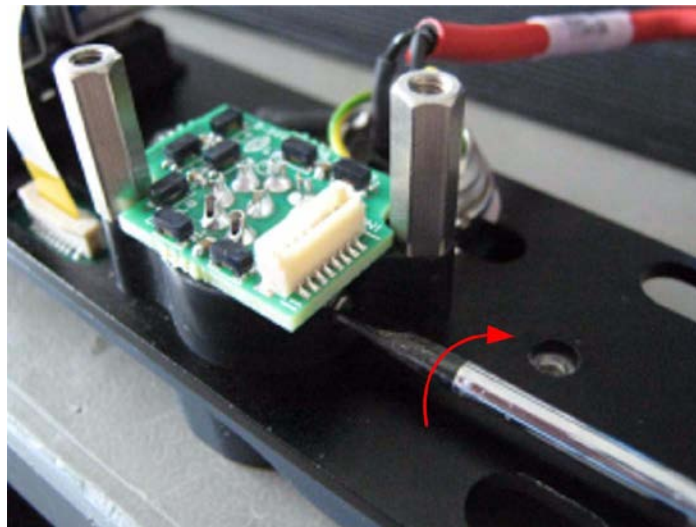


Figure 15: Tightening XLR-7M Grubscrew

When the XLR-7M Headset Connector Assembly has been fitted the front view is shown in Figure 16.



Figure 16: Front View of XLR-7M Headset Connector Assembly Fitted

Step 13

To reassemble the panel carry out the following steps:

- Refit the 2 Pozidrive screws from the Front Panel Audio Card.
- Reconnect the cable to the Headset Connector Assembly.
- Reconnect the microphone and main board connection cables to the Front Panel Audio Card.

If the panel front assembly has been removed the following steps must be carried out to reassemble the panel:

- Locate the front panel assembly back onto the chassis.
- Ensure that no cables are trapped between the front panel assembly and the chassis before fitting the screws.
- Refit the countersunk screws to the rear of the mounting ears.
- Replace the four countersunk screws on the bottom of the chassis.
- Refit the 2 encoder knobs to the Main and Aux level controls.

Step 14

To complete the reassembly of the panel:

Screw the lid back on the panel making sure that the correct screws are used (see Figure 3). Refit the four panhead screw and washer assemblies first and then the four countersunk screws.



Figure 17: Reassembled Rack Mount Panel

If the power supply was originally held in the cradle replace it in the cradle and reattach the power supply cable to the power inlet (see Figure 1).

Remount the panel in the rack or console and reconnect power and I/O cables.

Fitting the XLR-7M Headset Connector Assembly to Desktop Panels

Before fitting the XLR-7M Headset Connector Assembly the panel must be completely disconnected from any cabling. Place the panel on a clear workspace suitable for antistatic precautions.

Step 1

Note: Record whether the panel has been build for desktop use or for attachment to a wall to ensure the front panel is replaced in the correct orientation.

Remove the eight countersunk screws holding the front of the panel on. The countersunk screws are located on the ends of the panel, four on each end (Figure 18).

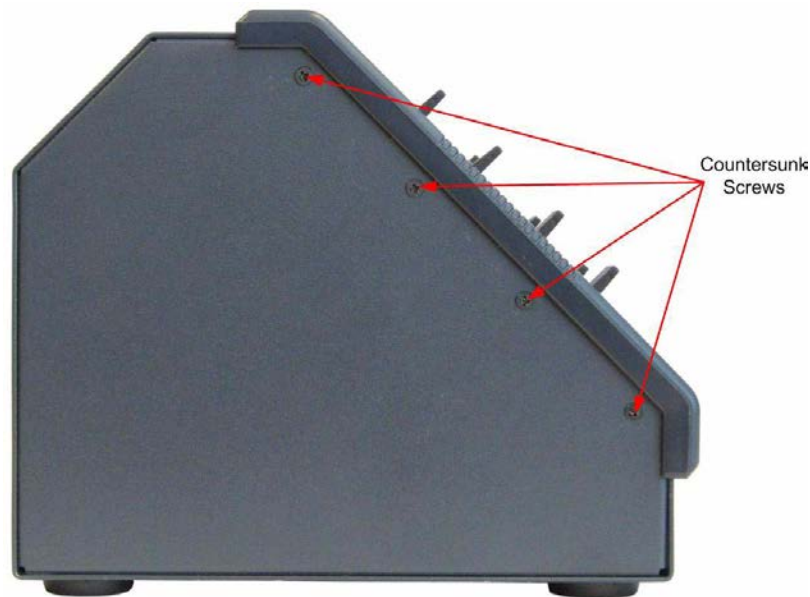


Figure 18: Desktop Panel Retaining Screws

Remove and retain all the screws and remove the front panel assembly. The cables connecting the front panel electronics to the main PCB are long enough to allow the panel front to be removed without having to unplug any of the cables.

Step 2

The Headset Connector Assembly secured to the mounting block by two pozidrive screws at the top of the front panel assembly.

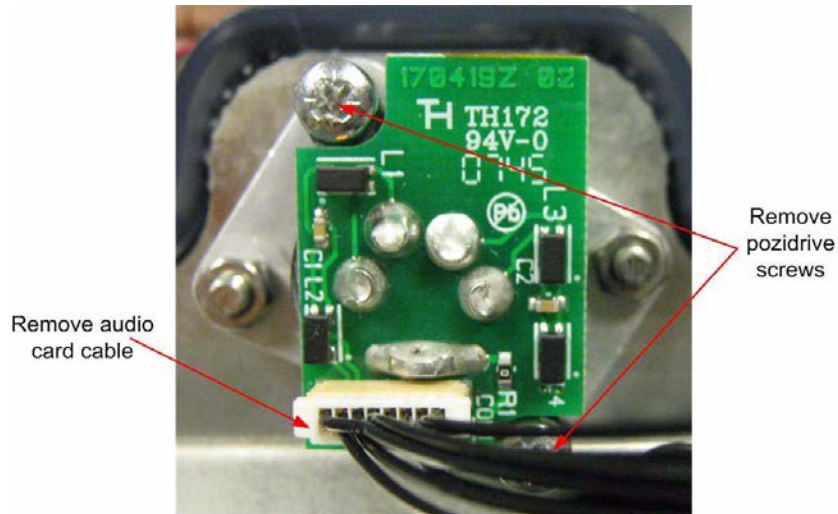


Figure 19: Desktop Front Panel Assembly with XLR-4M Fitted

- Remove the audio card cable.
- Remove the two pozidrive screws securing the Headset Connector Assembly to the mounting block.
- Remove the Headset Connector Assembly.

Step 3

Before fitting the XLR-7M Headset Connector Assembly it should be checked to ensure that the PCB is aligned so that the pozidrive screw heads will clear the PCB when they are in place.

If the assembly requires adjustment please refer to Appendix A.

Note: The grub screw should not be loose when fitting the Headset Connector Assembly to the mounting block.

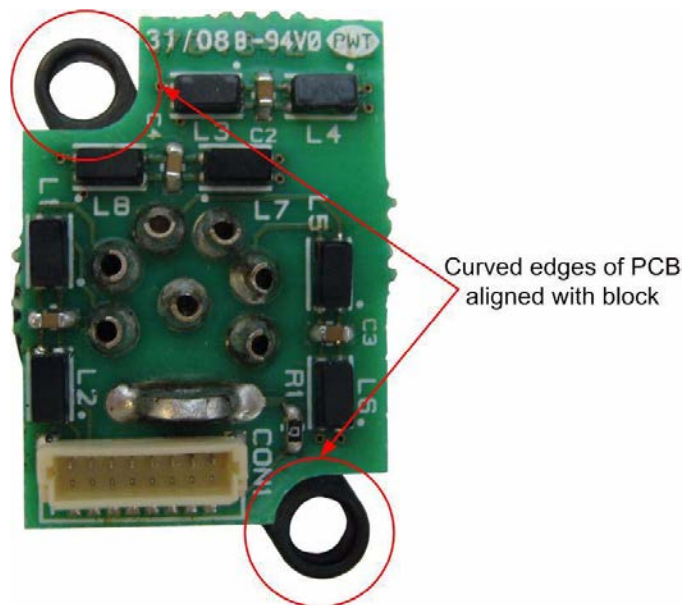


Figure 20: Headset Connector Assembly Alignment

Position the XLR-7M Headset Connector Assembly on the mounting block and replace the two pozidrive screws.

Step 4

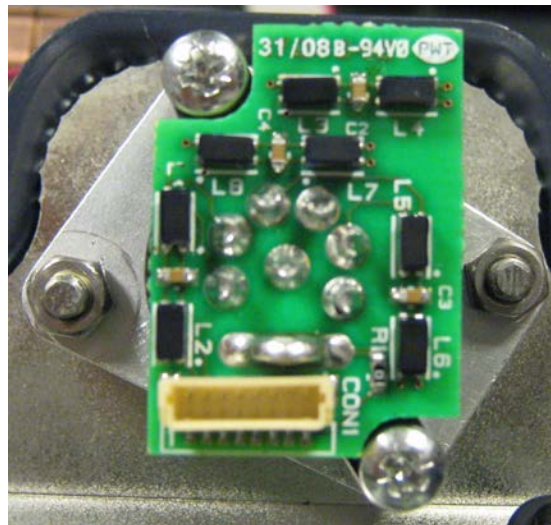


Figure 21: XLR-7M Headset Connector Assembly Attached to Mounting Block

Replace the audio card cable in the Headset Connector Assembly.

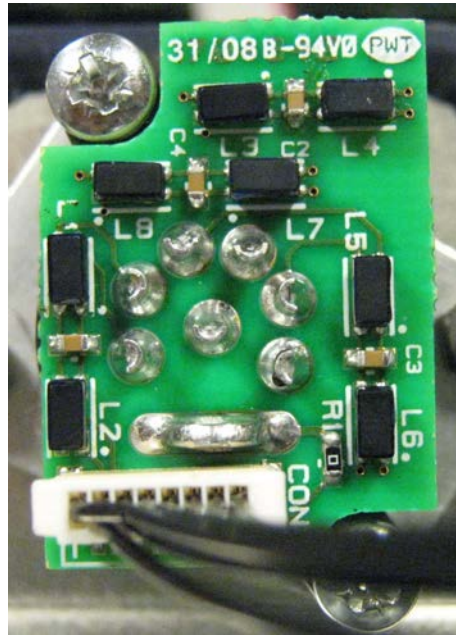


Figure 22: XLR-7M Headset Connector Assembly with Audio Card Cable

Step 5

Replace the front panel assembly ensuring it is replaced in the correct orientation noted in step 1, making sure that the correct screws are used (see Figure 18).

Insert the microphone connector edge into position first, then lower the headset connector into place.

Note: Ensure that no cables are trapped before attempting to refit the screws.

Apply pressure to the lid to align the screw holes and fit the top and bottom screws loosely on each side before fitting the remaining screws and tightening all the screws.

Re-site the panel and reconnect power and I/O cables.

Appendix A Headset Connector Assembly Adjustment

In order to align the PCB correctly with the block the grubscrew should be loosened before adjusting the Headset Connector Assembly. This is done by turning the grubscrew anticlockwise to loosen the PCB from the block.

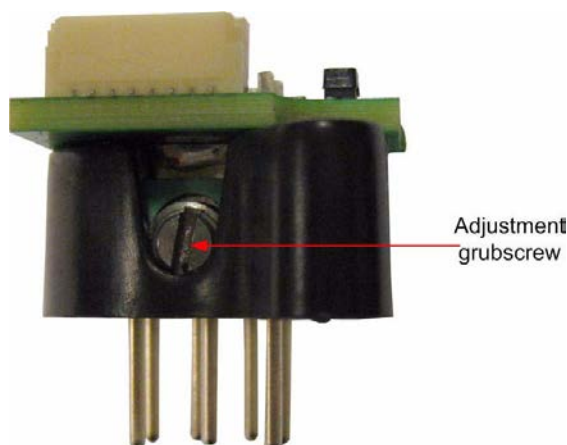


Figure 23: Grubscrew in Headset Connector Assembly

Adjust the PCB position to centralize the curved PCB edges with respect to the holes in the block and then retighten the grub screw by turning it clockwise.

Warning: The grub screw in the XLR connector has a left hand thread; when this is turned clockwise the grub screw will move out of the connector and lock with the black plastic moulding. Do not over tighten the grub screw as this is very difficult to refit once the PCB is assembled.

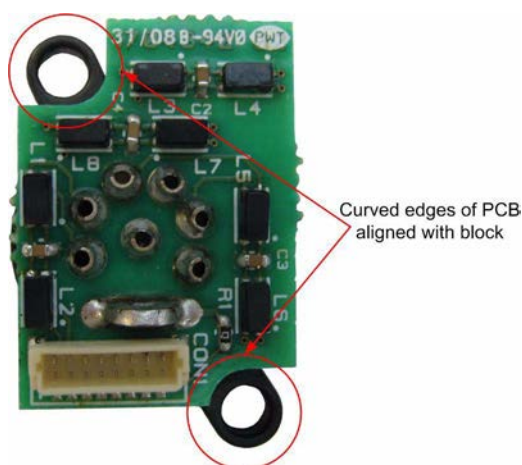


Figure 24: XLR-7M Assembly Alignment