

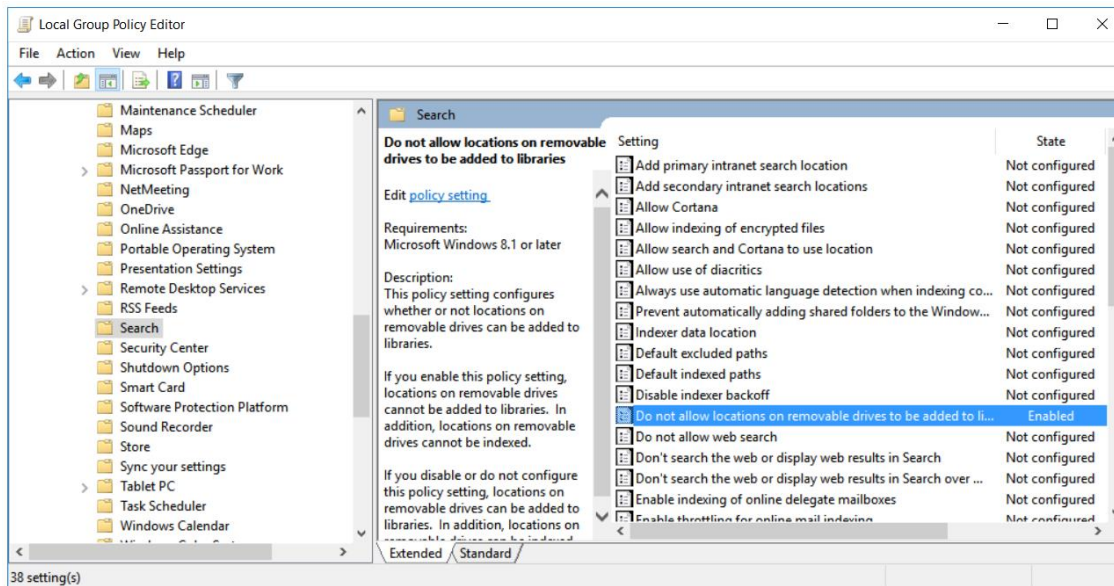
Fix Windows 8/10 to download S37 file to 232-ATSC 4 and 232-ATSC-1

“File too large” or “Missing Destination” Windows error code

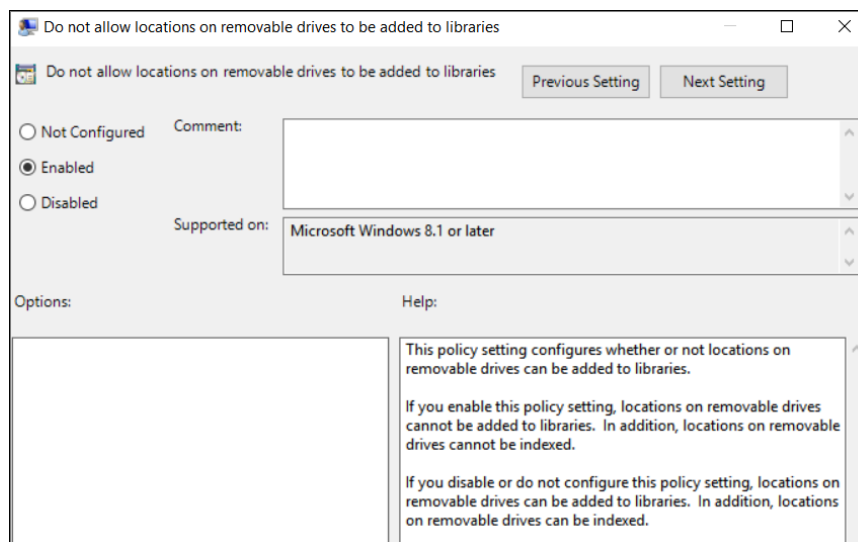
If you use Windows 10 or 8 to copy the S37 file to the 232-ATSC 4, ATSC-SDI 4, 232-ATSC-1 and ATSC-SDI tuners, you may get what appears to be a false error message, such as File Too Large or No Destination.

The reason for this is Windows 10/8 attempts to load a different file first, an app that aids indexing USB memory for files. Generally, this is an aid for low-power Windows tablets, but it's preventing you from installing the S37 file. The fix is fairly simple.

First, launch the Start Menu, and enter **gpedit.msc** in **Search** or **Run** field. This brings up this app:



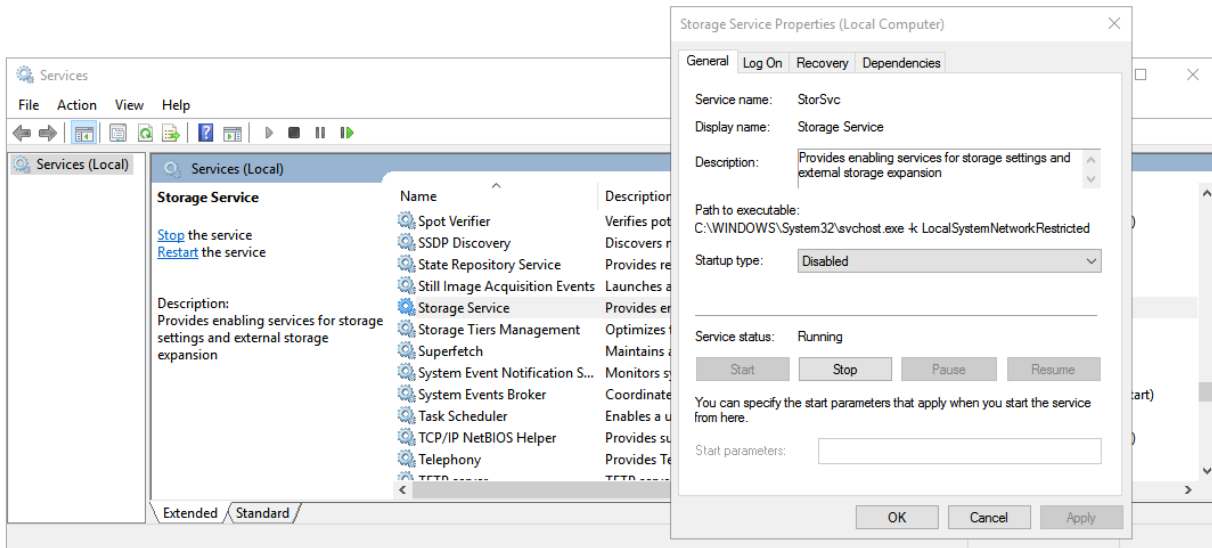
- Click to open the **Administrative Templates** in the **Computer Configuration** folder
- Click to open the **Windows Components** folder and go down the list of folders and click on **Search**.
- Then double-click the “**Do not allow locations on removable drives to be added....**” Item



Click on **Enabled** and then click **Apply**. Now you can update the S37 file to the tuners.

USB “Kickout”

This symptom happens when you start the S37 update process on the front panel, and Windows immediately drops the connection. This is another esoteric Windows setting that can be corrected.



- Go to **Control Panel/Administrative Tools/ Services**
- Find **Storage Services**
- Double-click or left-click on **Properties**
- In the middle of the window, select **Disabled** for the **Startup Type** and **Apply**
- Click **Stop** to stop the service currently running