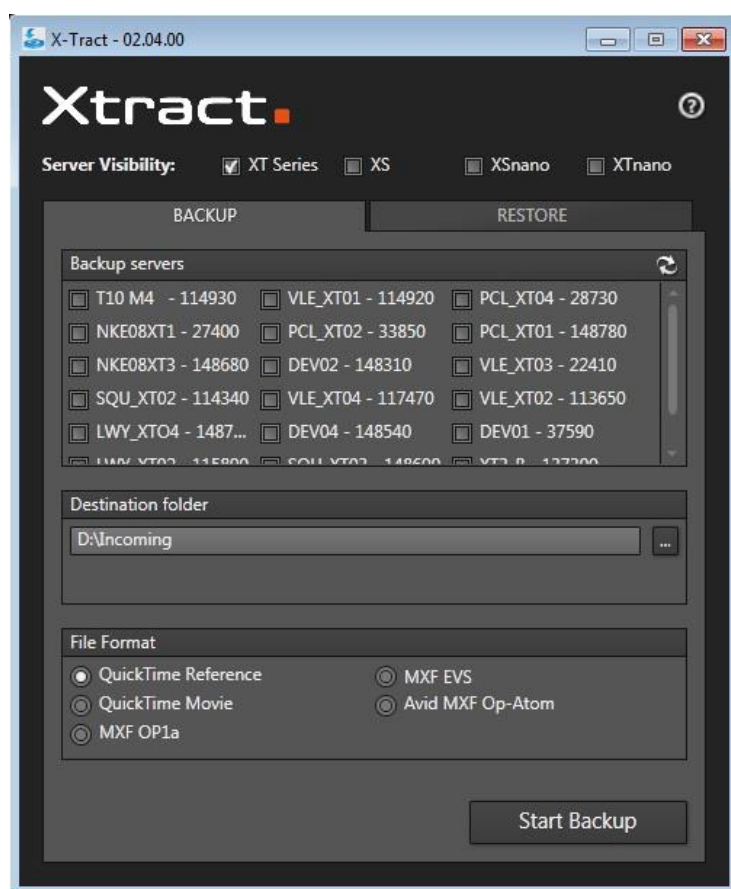


XTRACT

RELEASE NOTE **VERSION 2.06.00**

Date: FEB 2016 Issue: 1.0

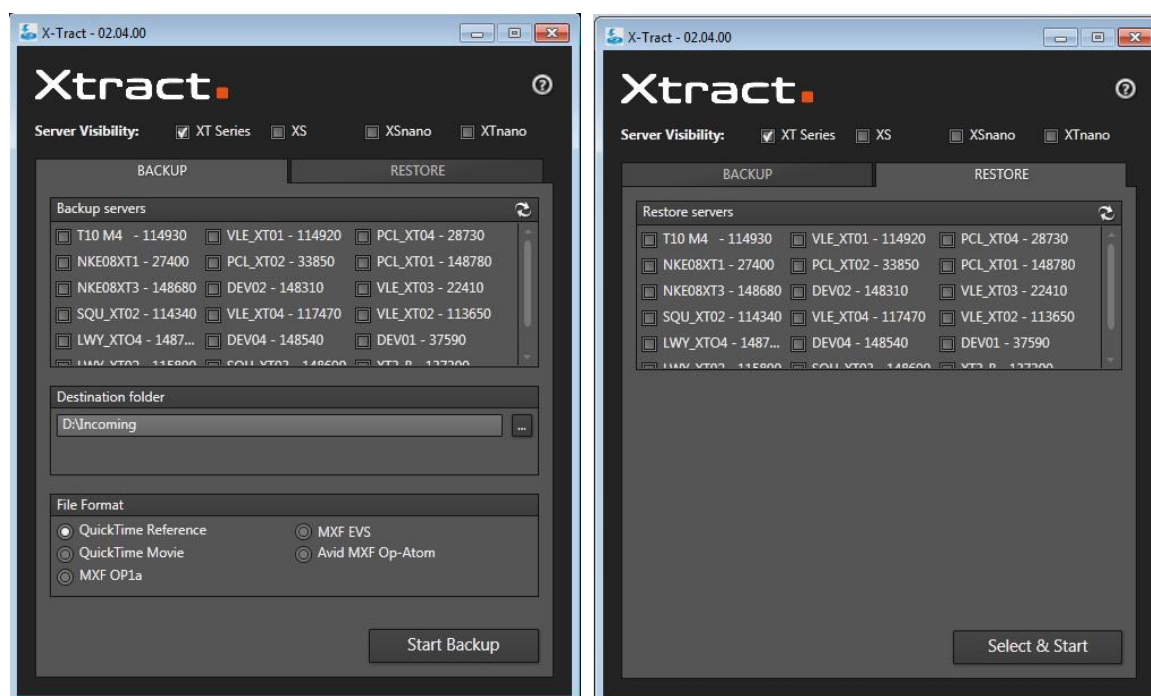


PRODUCT DESCRIPTION	2
NEW FEATURE OF VERSION 2.06.00:	2
SOFTWARE RESTRICTIONS.....	2
CODEC/WRAPPER SUPPORT	3
LIST OF DEPENDENCIES.....	3

PRODUCT DESCRIPTION

Xtract application is an interface software dedicated to the backup and restore of clips from or to one or several EVS video servers (XT3, XS, XTnano and/or XSnano). Xtract manages the backup and transfer of all clips the operator has marked as "to archive" via the Remote Panel.

Xtract acts as a user interface for the background running Xsquare application. Xtract sends its commands to Xsquare using the LinX protocol.



NEW FEATURE OF VERSION 2.06.00:

- Support of new XS3 server.
- No other feature to mention: only bugs' corrections and updates of dependencies.

SOFTWARE RESTRICTIONS

- > Xsquare is configured only for file transfer with wrapping when required but cannot perform any format transcoding.
- > The Xtract application must be installed on the same computer as the Xsquare application.
- > The Xsquare application used by Xtract is solely dedicated to Xtract and cannot be used by any other application.

CODEC/WRAPPER SUPPORT

The File formats with XT native codecs are:

- > **EVS MXF** with SD codecs: MJPEG, IMX30-40-50, DVCPRO50; and with HD codecs: MJPEG, VC-3 100, Avid DNxHD 120-145-185-220, DVCPRO HD, Apple ProRes 422, Apple ProRes 422 (HQ) and Apple ProRes 422 (LT), AVC-Intra 100.
- > **Quick Time Movie** with SD codecs: MJPEG, IMX30-40-50, DVCPRO50; and with HD codecs: MJPEG std, VC-3 100, Avid DNxHD 120-145-185-220, DVCPRO HD, Apple ProRes 422, Apple ProRes 422 (HQ) and Apple ProRes 422 (LT), AVC-Intra 100.
- > **Quick Time Reference** with SD codecs: IMX30-40-50, DVCPRO50; and with HD codecs: VC-3 100, Avid DNxHD 120-145-185-220, DVCPRO HD, Apple ProRes 422, Apple ProRes 422 (HQ) and Apple ProRes 422 (LT), AVC-Intra 100.
- > **MXF OPAtom (Avid)** with SD codecs: IMX30-40-50 and DVCPRO; and with HD codecs: VC-3 100, Avid DNxHD 120-145-185-220, DVCPRO HD, AVC-Intra 100.
- > **MXF OP1a (Std SMPTE)** with SD codecs IMX30-40-50 and DVCPRO; and with HD codec: DVCPRO HD, VC-3 100, Avid DNxHD 120-145-185-220, AVC-Intra 100.

Important Note:

XTRACT does not support backup of XDCAMHD clips.

LIST OF DEPENDENCIES

- > dotNET Framework 4.5
- > XSQUARE version 3.5.8 with XTAccess version 3.4.14
- > XSecure version 1.02.01
- > **Multicam version 14.02** and previous versions.

Important Note:

XTRACT version 2.05.02 is the last version fully validated with Multicam 11.02