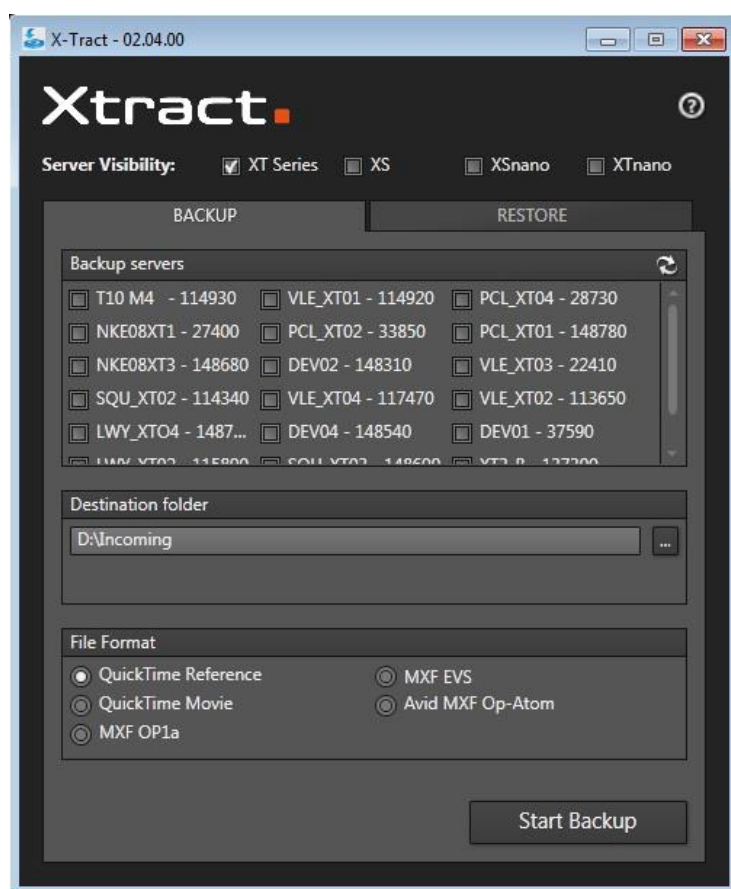


## XTRACT

RELEASE NOTE **VERSION 2.7.0**

Date: AUG 2016 Issue: 1.0

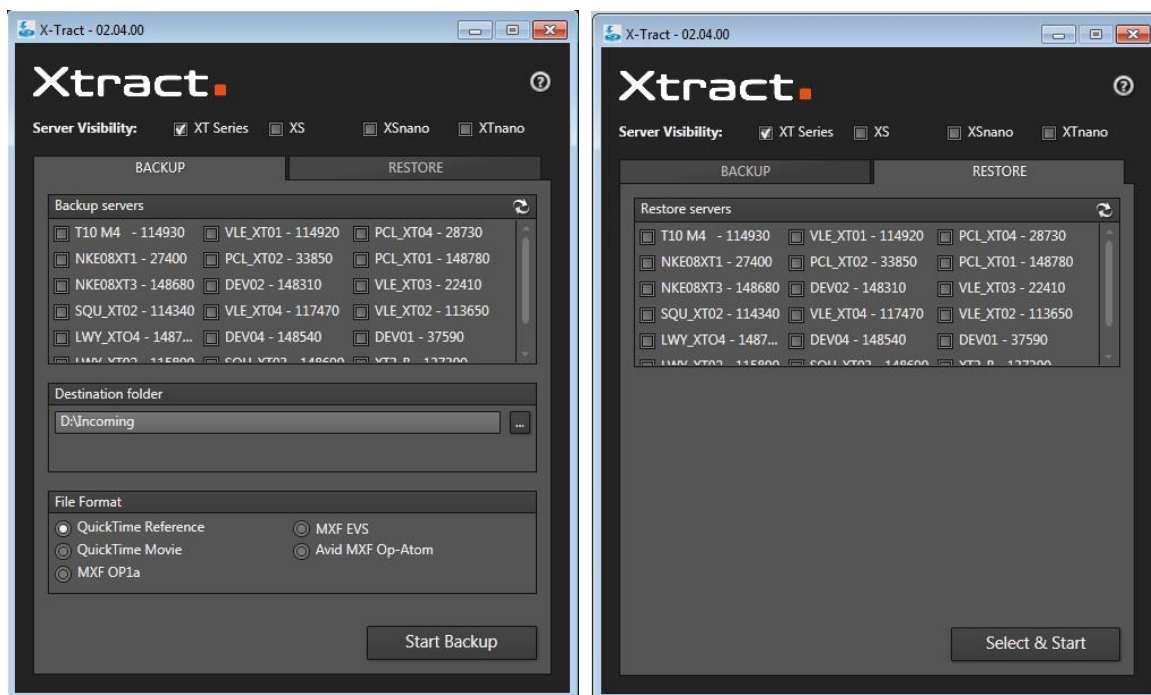


|                                     |   |
|-------------------------------------|---|
| PRODUCT DESCRIPTION .....           | 2 |
| NEW FEATURE OF VERSION 2.7.0: ..... | 2 |
| SOFTWARE RESTRICTIONS.....          | 2 |
| CODEC/WRAPPER SUPPORT .....         | 3 |
| LIST OF DEPENDENCIES.....           | 3 |

## PRODUCT DESCRIPTION

**Xtract** application is an interface software dedicated to the backup and restore of clips from or to one or several EVS video servers (XT3, XS, XTnano and/or XSnano). Xtract manages the backup and transfer of all clips the operator has marked as "to archive" via the Remote Panel.

Xtract acts as a user interface for the background running Xsquare application. Xtract sends its commands to Xsquare using the LinX protocol.



## NEW FEATURE OF VERSION 2.7.0:

- Support of MULTICAM 15
- No other feature to mention: only bugs' corrections and updates of dependencies.

## SOFTWARE RESTRICTIONS

- > Xsquare is configured only for file transfer with wrapping when required but cannot perform any format transcoding.
- > The Xtract application must be installed on the same computer as the Xsquare application.
- > The Xsquare application used by Xtract is solely dedicated to Xtract and cannot be used by any other application.

## CODEC/WRAPPER SUPPORT

The File formats with XT native codecs are:

- > **EVS MXF** with SD codecs: MJPEG, IMX30-40-50, DVCPRO50; and with HD codecs: MJPEG, VC-3 100, Avid DNxHD 120-145-185-220, DVCPRO HD, Apple ProRes 422, Apple ProRes 422 (HQ) and Apple ProRes 422 (LT), AVC-Intra 100.
- > **Quick Time Movie** with SD codecs: MJPEG, IMX30-40-50, DVCPRO50; and with HD codecs: MJPEG std, VC-3 100, Avid DNxHD 120-145-185-220, DVCPRO HD, Apple ProRes 422, Apple ProRes 422 (HQ) and Apple ProRes 422 (LT), AVC-Intra 100.
- > **Quick Time Reference** with SD codecs: IMX30-40-50, DVCPRO50; and with HD codecs: VC-3 100, Avid DNxHD 120-145-185-220, DVCPRO HD, Apple ProRes 422, Apple ProRes 422 (HQ) and Apple ProRes 422 (LT), AVC-Intra 100.
- > **MXF OPAtom (Avid)** with SD codecs: IMX30-40-50 and DVCPRO; and with HD codecs: VC-3 100, Avid DNxHD 120-145-185-220, DVCPRO HD, AVC-Intra 100.
- > **MXF OP1a (Std SMPTE)** with SD codecs IMX30-40-50 and DVCPRO; and with HD codec: DVCPRO HD, VC-3 100, Avid DNxHD 120-145-185-220, AVC-Intra 100.

**Important Note:**

**XTRACT does not support backup of XDCAMHD clips.**

## LIST OF DEPENDENCIES

- > dotNET Framework 4.5
- > XSQUARE version 3.7.2 with XTAccess version 3.7.7
- > XSecure version 1.02.01
- > **Multicam version 15** and previous versions.

**Important Note:**

**XTRACT version 2.05.02 is the last version fully validated with Multicam 11.02**