



Customer Service BULLETIN

Distribution

- WW ☒
APAC ☐
EMEA ☐
JAPAN ☐
LATAM ☐
NAM ☐

Internal Only ☐

Customer 000023696
Service Bulletin

Title Package update XCU Universe

Date 2021-03-12

Product XCU Universe

Product Version All

Overview

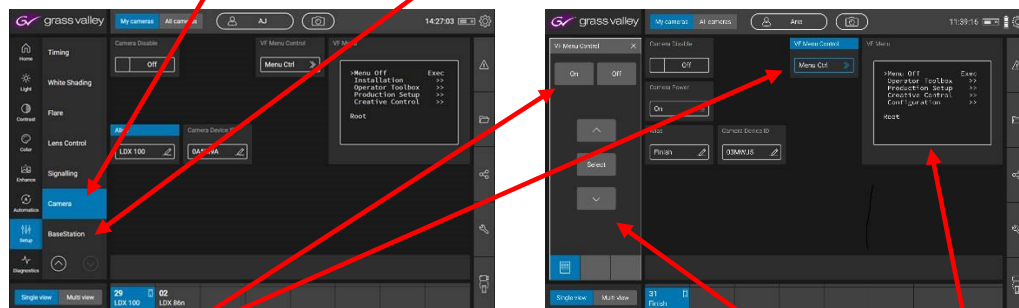
System parts involved:

- XCU Universe 0031 126 00200 **V09**

Overall Message

New functionality:

- Menu control of XCU available in the App, now also for Universe XCU (via Setup > Camera or Setup > Basestation)



Once "Menu Ctrl" is selected, the XCU menu can be controlled (and is visible) via the App. It can also be controlled via the CGP rotary/push button.

Note: Creative Grading Engine is **v2.0.0023** or higher.

Universe XCU eXchangable Control Unit (10G)

After updating the package, the status of the Universe XCU becomes:

Package_XCU_Univ_392240764761_09

PC Board Name	PC Board No (12NC)	Firmware No (12NC)	Version
Generic Board Appl. SW	3922 406 57241	3922 407 63011	24.00
Generic Board FW 1	3922 406 57241	3922 407 64131	00.39
Generic Board FW 2	3922 406 57241	3922 407 64751	00.23
Generic Board SW	3922 406 57241	3922 407 63021	05.15
Transmission Board FW 1	3922 406 57211	3922 407 64111	00.70
Transmission Board FW 2	3922 406 57211	3922 407 64741	00.43
Transmission Board SW	3922 406 57211	3922 407 64811	00.33
User Interface Board	3922 406 57441	3922 407 64691	00.16

Contacts

Grass Valley Product Support

Web-based support is available for many Grass Valley products. Please visit our online Knowledgebase:

<http://mygrassvalleyportal.force.com/gvknowledge>

For or technical assistance, please contact us by e-mail or phone. For more information refer to:

<http://www.grassvalley.com/support/contact>

Overview

For an overview of released camera service bulletins, fault descriptions, related products and filter options, refer to: <ftp://ftp.grassvalley.com/cameras/>