

# GUIDE

---

## *Who is this guide for*

This guide is for advanced user who uses Grassvalley products that are using Compact Flash card to operate. One of these well none product are KaleidoX series.

## *What is this guide for*

This guide will show you how to reimage “ghost” an already made image to a compact Flash card.

## *Terminology:*

**Ghost** (*General Hardware-Oriented System Transfer*)

**CompactFlash (CF)** is a [mass storage device](#) format used in portable electronic devices .

**KAleido X** : High picture count multi-viewer with advanced alarming

**Frame** : Part of the KaleidoX that is attach to the Rack and as the power switch and slots to seat the KaleidoX board.

**Seat and reseat:** Action that is to “slide-out” or “slide-in” the slots of a frame the KX board till the board is disconnected or connected in to the frame.

## *What is needed to the do this procedure*

### **Compact Flash**

- Choose a compact flash with the right amount of space available in order for the image file to be ghosted

### **Compact Flash Reader**

- Any USB type of Compact Flash Reader will do Compact Flash are 36s43mm
- Preferable with Led status light

### **Computer**

- With USB connector or with included Compact Flash Reader
- **Windows**XP or 7 or 8

### **USB Flash Tool Software**

- The one we will be using is “USB image tools.exe”.

## *Quick Steps*

- Make a Backup of the KaleidoX database
- Contact the Technical Support from Grass valley and get the latest Firmware image file for your equipment.
- Take the compact flash from the KaleidoX board
- Put it in a Compact Flash Reader
- Use the Software “USB image Tools” to ghost the Flash Card
- Put the CF card back in the KaleidoX board and push the Card Back in the Frame

PS: The Frame can be left powered at all time.

# COMPACT FLASH REIMAGE PROCEDURE (GHOST)

## Specific For KAleidoX products

### Step by steps

#### 1. Make a Backup of the KaleidoX database

- Use Xedit Grass Valley Software to make a complete backup of the KaleidoX

#### 2. Download the image file and the “USB Flash Tool” from the FTP site that was sent to you from a Grass Valley Tech Support.

**\*\*IMPORTANT: Make sure if you use the express link to copy and paste the link in Windows Explorer and DO NOT USE Internet Explorer.**

#### 3. Unzip the .zip image file

#### 4. Get the Compact flash of the KaleidoX that need to be updated or repaired

- No special tool needed to retrieve the compact flash.
- Pull the **MASTER** output card for the frame and take it's compact flash.
- If no other advice from technician then all the other “**output card**” should be **pulled out from the frame** and remain pulled till the end of the reimage procedure.

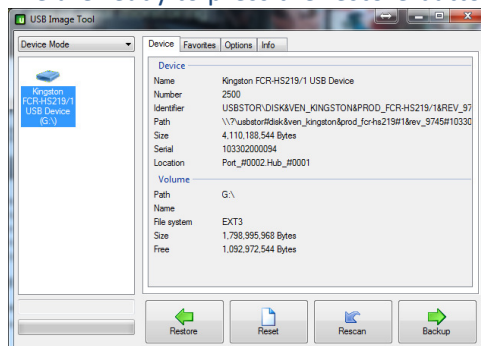
#### 5. Insert the CF or SD into the card reader

- If Windows asks you to format it again, click Cancel/NO



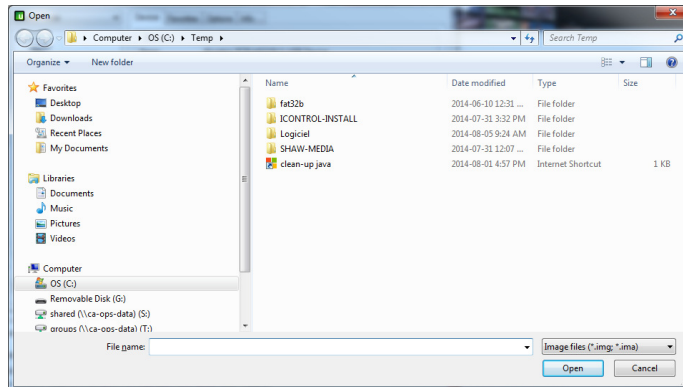
#### 6. Start the CompactFlash USB tool Software

- Click on the Compact Flash presented to you in the Available Device list.
- Most of the time you will only need the Device tab
- We are ready to press the restore button

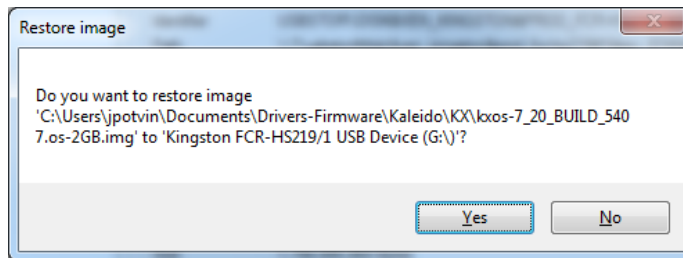


# COMPACT FLASH REIMAGE PROCEDURE (GHOST) Specific For KAlaideoX products

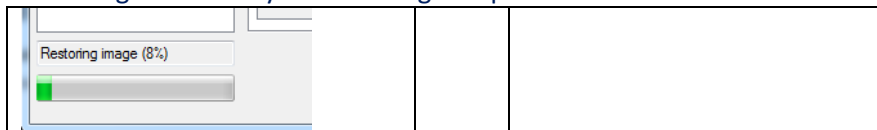
7. Choose the Restore button to select the image file to ghost on the Compact Flash
  - a. Choosing the restore button will open a browse window in order for you to select the Image file that needs to be ghosted on the Compact Flash.



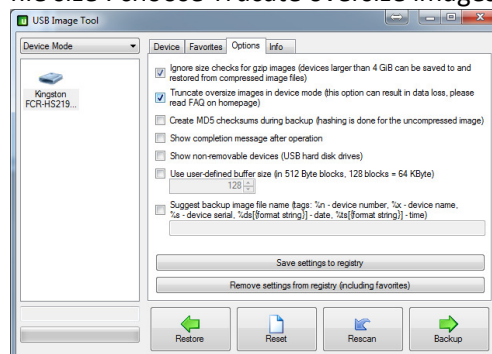
- b. Be careful if you select Yes on the Next Window **everything on the Compact Flash will be erased** and replace with the new image file content.



8. The flash card re-imaging is in progress so you should see the card reader flashing and the following message at the bottom of the software
  - a. Reaching 100% tells you that the ghost process as been done with success.



9. Options Tab
  - a. You will need to modify options in the "options" tab only on certain occasion
    - i. The Cf card you are trying to ghost is just a little to small for the Image file size : choose Truncate oversize images in device mode.



# COMPACT FLASH REIMAGE PROCEDURE (GHOST)

## Specific For KAleidoX products



10. Take the compact flash and put it back on the Kaleido-X board.
  - a. Be careful for static discharge since board can be damaged from it.
  - b. No special tool needed just slip the Compact Flash in connector
  
11. Without powering the frame push back the card in the slot
  - a. Or follow the Grass Valley technician advice since there are many possibilities in order to regain complete rebuilding of the frame.
  - b. At this point **no other output card should be in the frame** except this reimaged board inside the master slot of the KAleidoX frame.
  
12. Wait for the Light to stabilize before you push the other card in the frame
  - a. You should wait for the two first led to become **green and fixed**. (not blinking)
    - i. **Cpu and Status led**
  - b. If the technician as not specified to leave other output cards in the frame you **should have only one output card** in the frame, and it should be **only** the one with the Re-imaged compact Flash.
  
13. Everything is stabilized you can now seat the other card.
  - a. Seat back the other output card in the frame in order for those card to be updated from within the frame.
  
14. All CPU and Status Fixed Green Led **should** tell you that all the frame is back on line