

Gateway GUI Application

The GatewayGUI application is an easy tool provided with the Kaleido-K2, which demonstrates how commands can be sent to the Kaleido-K2 using the Gateway interface. There is no support or further development for this tool.

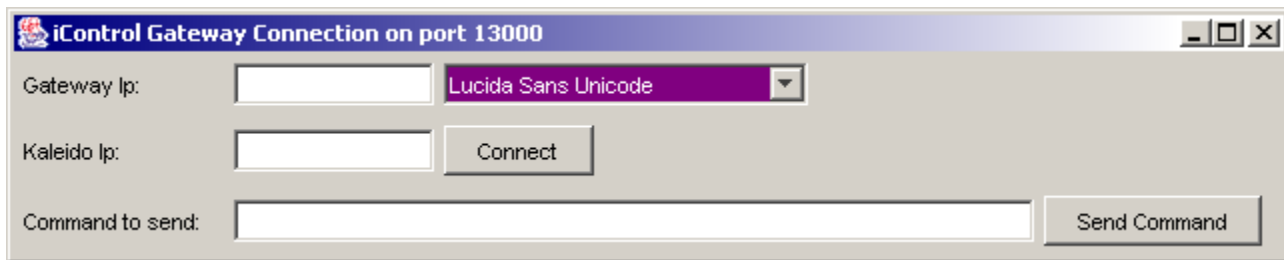
Start the Gateway GUI application

This tool is available once KEdit software is installed.

To start the tool, follow these steps:

- Click on the Start menu of your system
- Go in *Programs -> KEdit*
- Click on the icon named GatewayGUI.

This small GUI appears on the desktop.



How to use the Gateway demo application

Open a session.

To do so, follow these steps:

- Enter the IP address of the system running the iControl Service Gateway in the ***Gateway Ip*** text field.
- In the ***Kaleido Ip*** text Field: Enter the Kaleido-K2 system IP address you wish to send commands to.
- Click on the ***Connect*** button. The connect button will automatically send the command <openID> to the Kaleido-K2 IP you specified, on the port 13000. Beside the Connect button an </ack> or </nack> answer from the Gateway will be displayed. If nothing appears, it means that the Gateway is not started on the ***Gateway Ip*** system.

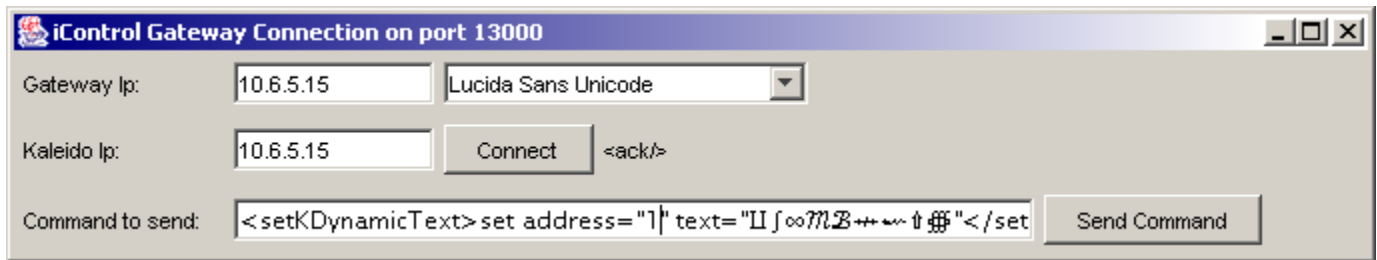
Note that it can take 2-3 seconds before you receive a response from the Gateway.

When you are connected to the Gateway (you received an </ack> beside the Connect button), you can send any valid command to the Kaleido-K2. To do so, enter a command in the ***Command to send*** text field.

For a list of commands accepted by the Kaleido-K2, please refer to the User's Manual of the Kaleido-K2.

The Font combo box is used to specify the font to use for the *Command to send* field. It is mainly used to send Unicode characters to the Kaleido-K2.

Note that the choice of a font doesn't have any impact on the Kaleido-K2. It is just a convenient means of displaying Unicode characters (like Chinese or Japanese) onto the Kaleido-K2 from this GUI.



How to modify the Gateway demo application.

You may find it useful to modify the Gateway demo application to suit your needs. Therefore, we provide the source code of this application. After making your modifications, you will need to recompile the application. Here is how do it:

The application has been written using the Java language. To compile it, you will need to install a JDK on your computer. To create the application we used the JDK1.4.1 from Sun Microsystems. You can find it at <http://java.sun.com/j2se/1.4.1/download.html>. Install it on your computer, and follow the on-screen instructions.

Now that you have a properly configured JDK installed on your machine, you will be able to compile the modified Gateway demo application.

- Open a DOS console: click on Start->Run, and enter `cmd`.
- Type `cd \program files\Miranda\KEdit 5.00\Tools\Source` (or enter the path where the file `GatewayGui.java` resides).
- Then type `javac GatewayGui.java`.
- The compiler will run, and you should now have two files called `GatewayGui.class` and `GatewayGui$1.class`.

Now to start the application, just type `java -cp . GatewayGui`