

Kayak HD

DIGITAL PRODUCTION SWITCHER
WITH KAYENNE XL CONTROL PANEL

Release Notes

A white coordinate system with a red dot at the origin and arrows pointing up and to the right.

SOFTWARE VERSION 7.0.0

071844612
MAY 2009



Affiliate with the N.V. KEMA in The Netherlands

CERTIFICATE

Certificate Number: 510040.001

The Quality System of:

Grass Valley, Inc.

400 Providence Mine Road
Nevada City, CA 95945
United States

15655 SW Greystone Ct.
Beaverton, OR 97006
United States

10 Presidential Way
3rd Floor, Suite 300
Woburn, MA 01801
United States

Nederland B.V.
4800 RP BREDA
The Netherlands

Weierstadt, Germany
Brunnenweg 9
D-64331 Weierstadt
Germany

Rennes, France
Rue du Clos Courtel
Cesson-Sevigne, Cedex
France

Technopole Brest Iroise
CS 73808
29238 Brest Cedex 3
France

17 rue du Petit Albi-BP 8244
95801 Cergy Pontoise
Cergy, France

2300 South Decker Lake Blvd.
Salt Lake City, UT 84119
United States

7140 Baymeadows Way
Suite 101
Jacksonville, FL 32256
United States

Including its implementation, meets the requirements of the standard:

ISO 9001:2000

Scope:

The design, manufacture and support of video hardware and software products and related systems.

This Certificate is valid until: June 14, 2009
This Certificate is valid as of: August 30, 2006
Certified for the first time: June 14, 2000

H. Pierre Sallé
President
KEMA-Registered Quality

The method of operation for quality certification is defined in the KEMA General Terms And Conditions For Quality And Environmental Management Systems Certifications.
Integral publication of this certificate is allowed.

KEMA-Registered Quality, Inc.

4377 County Line Road
Chalfont, PA 18914
Ph: (215)997-4519
Fax: (215)997-3809

CRT 001 073004

Accredited By:
ANAB



Kayak HD

DIGITAL PRODUCTION SWITCHER
WITH KAYENNE XL CONTROL PANEL

Release Notes



SOFTWARE VERSION 7.0.0

071844612
MAY 2009

Contacting Grass Valley

International Support Centers	France 24 x 7	+800 8080 2020 or +33 1 48 25 20 20 +800 8080 2020 or +33 1 48 25 20 20	United States/Canada 24 x 7	+1 800 547 8949 or +1 530 478 4148
Local Support Centers (available during normal business hours)	Asia	Hong Kong, Taiwan, Korea, Macau: +852 2531 3058 Indian Subcontinent: +91 22 24933476 Southeast Asia/Malaysia: +603 7805 3884 Southeast Asia/Singapore: +65 6379 1313 China: +861 0660 159 450 Japan: +81 3 5484 6868		
	Australia and New Zealand: +61 1300 721 495			Central/South America: +55 11 5509 3443
	Middle East: +971 4 299 64 40 Near East and Africa: +800 8080 2020 or +33 1 48 25 20 20			
	Europe	Belarus, Russia, Tadzikistan, Ukraine, Uzbekistan: +7 095 2580924 225 Switzerland: +41 1 487 80 02 S. Europe/Italy-Roma: +39 06 87 20 35 28 -Milan: +39 02 48 41 46 58 S. Europe/Spain: +34 91 512 03 50 Benelux/Belgium: +32 (0) 2 334 90 30 Benelux/Netherlands: +31 (0) 35 62 38 42 1 N. Europe: +45 45 96 88 70 Germany, Austria, Eastern Europe: +49 6150 104 444 UK, Ireland, Israel: +44 118 923 0499		

Copyright © Grass Valley. All rights reserved.

This product may be covered by one or more U.S. and foreign patents.

Grass Valley Web Site

The www.thomsongrassvalley.com web site offers the following:

Online User Documentation — Current versions of product catalogs, brochures, data sheets, ordering guides, planning guides, manuals, and release notes in .pdf format can be downloaded.

FAQ Database — Solutions to problems and troubleshooting efforts can be found by searching our Frequently Asked Questions (FAQ) database.

Software Downloads — Download software updates, drivers, and patches.

Contents

Section 1 — Kayak HD Release Notes	1
Introduction	1
New Features	1
Compatibility	1
Available Documentation on V700 Release CD	2
Software Installation	3
Installing the Sidepanel Software	3
Installing Panel and Mainframe Software	8

Kayak HD Release Notes

Introduction

This document includes notes for software installation, licenses, new features changes and enhancements, and other information specific to the release of Kayenne XL control panel, Kayenne XL menu panel and the Kayak HD video frame that have changed since Kayak/Kayenne XL software release V694.

New Features

- Support of Kayenne XL control panel on a Kayak HD mainframe
- Support of Kayenne XL menu panel on a Kayak HD mainframe
- Keyer 5&6 option available on full M/Es

Compatibility

The Software is compatible for connected device types

- Kayenne XL control panel
- Kayenne XL menu panel
- Kayak control panel
- Kayak HD mainframes

if the software has been installed from the same Release CD.

To run the Kayenne XL control panel on a Kayak HD mainframe, the Software License '**Kayenne XL Frame**' must be installed at the Kayak HD mainframe.

With V700 the Kayenne XL menu panel DS1220.xxx (1280x768Pix) replaces the former KayakHD Sidepanel version DS0203.xxx (640X480 Pix).

The software version V700 does not support the following hardware

- Kayak DD-1 and Kayak DD-2 Production Switcher
- Kayak HDX Control Panels (former DD35/XtenDD Control Panels)

Available Documentation on V700 Release CD

The V700 Release CD contains the following documentation:

- ReleaseNote.pdf (this document)
- Release Note Addendum
- Kayenne_XL_ISM_V700.pdf (Installation and Service Manual)
- Kayenne_XL_User_Manual_V700.pdf (User Manual)

V694 Documentation for Kayak HD

- Release_Note_V694.pdf, Kayak_User_Manual_V693.pdf (User Manual)
- KayakHDV694IPM845103.pdf, KayakHDV694ISM844806.pdf (Installation and Service Manual)

Software Installation

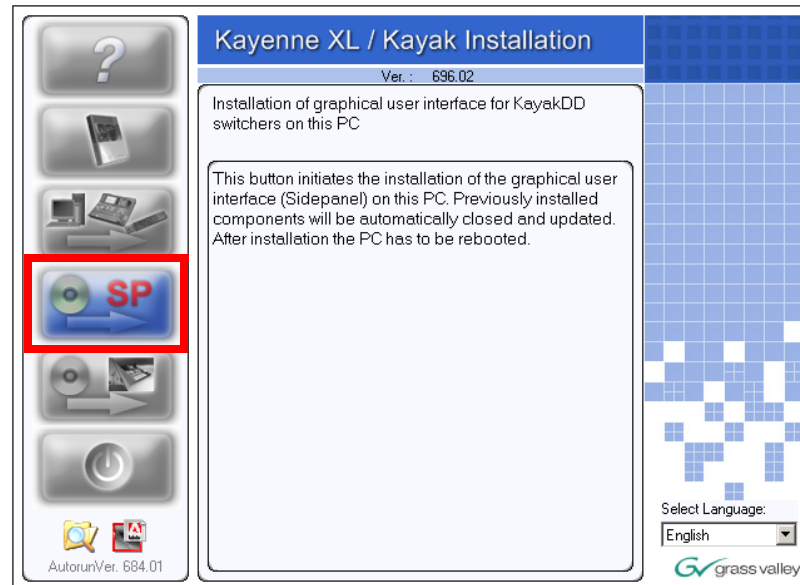
Installing the Sidepanel Software

- Insert the Kayak HD Software CD into your computer's CD-ROM drive. Or download the software from www.thomsongrassvalley.com. Copy the software to a USB device (flash memory or hard disk).
- Connect the USB device at the right side of the Menu Panel.
- Kayak HD Software uses an autorun application to help installing the software. Navigate to the following directory:

\ds0206\Autorun\Autorun.exe

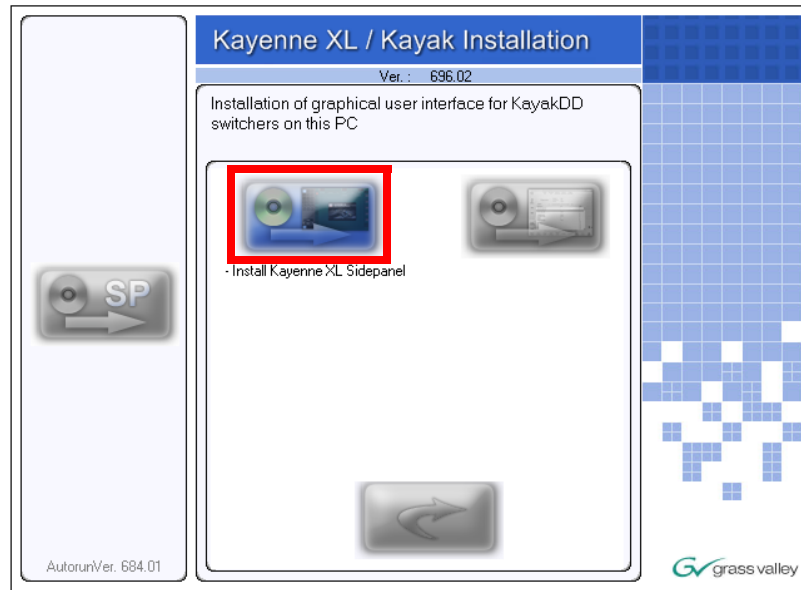
- Select '**Installation of graphical user interface**' at the Kayak HD / Kayak Installation wizard:

Figure 1. Side Panel Installation (Example)



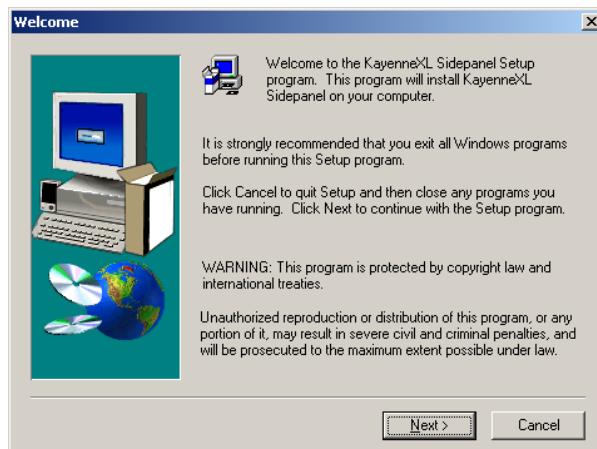
- Click on **Install Kayenne XL Sidepanel** to launch the installation.

Figure 2. Kayenne Side Panel Installation



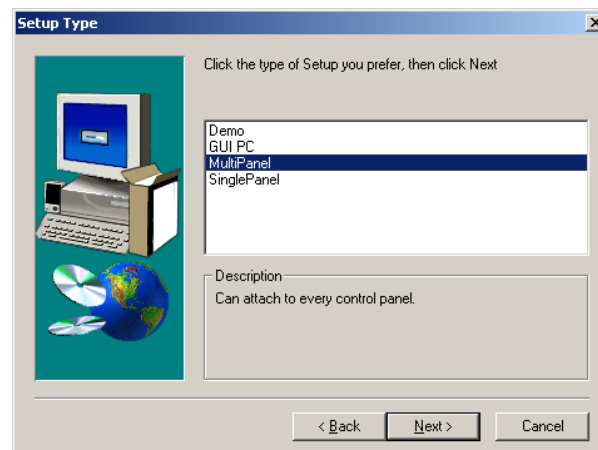
- The Sidepanel Software Installation Welcome screen displays. Click **Next**.

Figure 3. Confirm



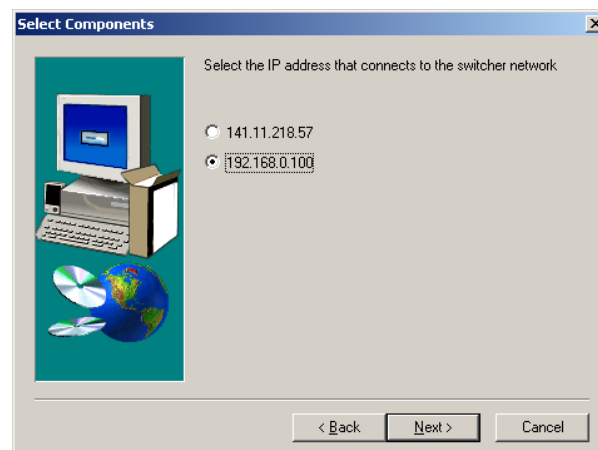
- Choose the type of installation you wish to perform:
 - **Demo:** Demo version, no connection to a panel or a frame.
 - **GUI PC:** Connection only to a frame, not to a panel.
 - **MultiPanel:** Connection to frame and panel.
 - **SinglePanel:** Connection to a specified panel during installation.

Figure 4. Installation type



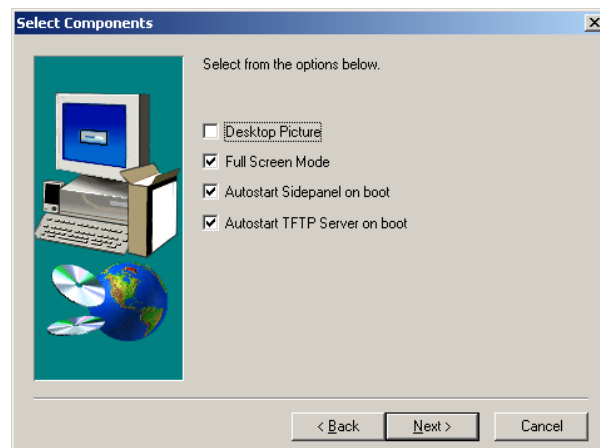
- Select the network which is used for the switcher network and click **Next:**

Figure 5. Select component



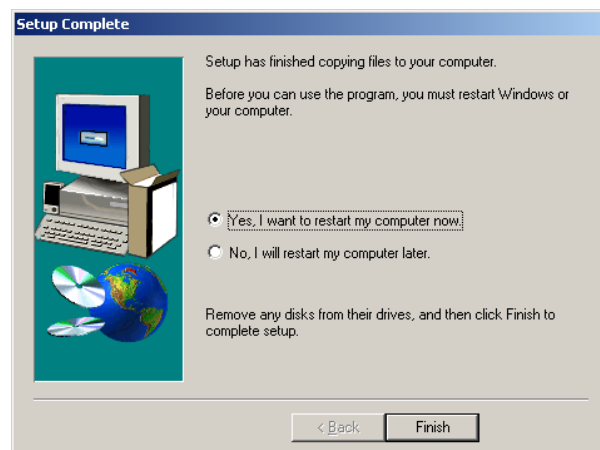
- Click to select or deselect the checkbox for **Desktop Picture, Full Screen Mode, Autostart Sidepanel on boot** and **Autostart TFTP Server on boot**.

Figure 6. Select options



- Click to select the checkbox for **Yes, I want to restart my computer now** and click **Finish**.

Figure 7. Confirm restart



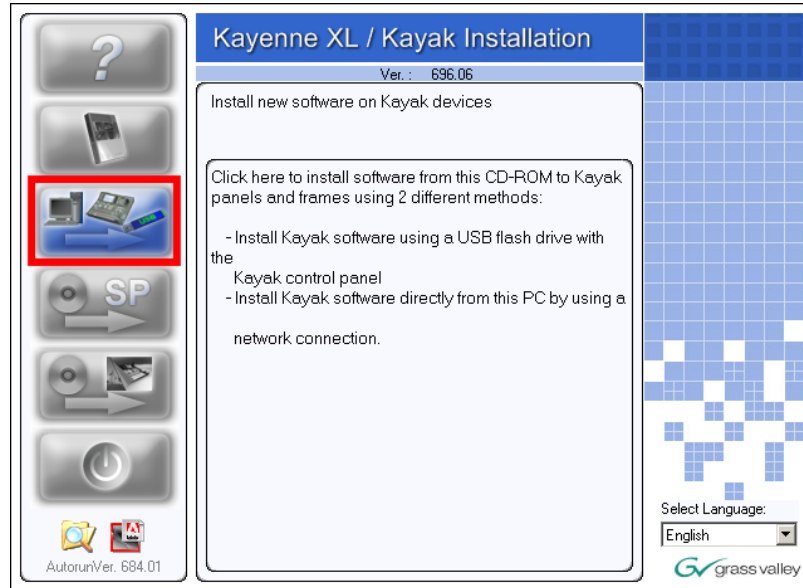
To complete the computer connection to the panel and frame after the computer has rebooted.

- Launch the Sidepanel software application.
- Click to select the box for **E-Box** at the top of the screen. A blue line displays in the bottom of the box to indicate that it has been selected.
- Click to select the box for **Panel** at the top of the screen.
- Click to select the name and IP address for the frame and the panel from the scrolling list at the bottom of the screen.
- Click the **Connect** button to connect the frame to the panel and to the computer Sidepanel software for this session.
- Click **Attach** to make the connection from the frame to the panel and to the computer Sidepanel software persistent so that it will remain after the computer reboots.

Installing Panel and Mainframe Software

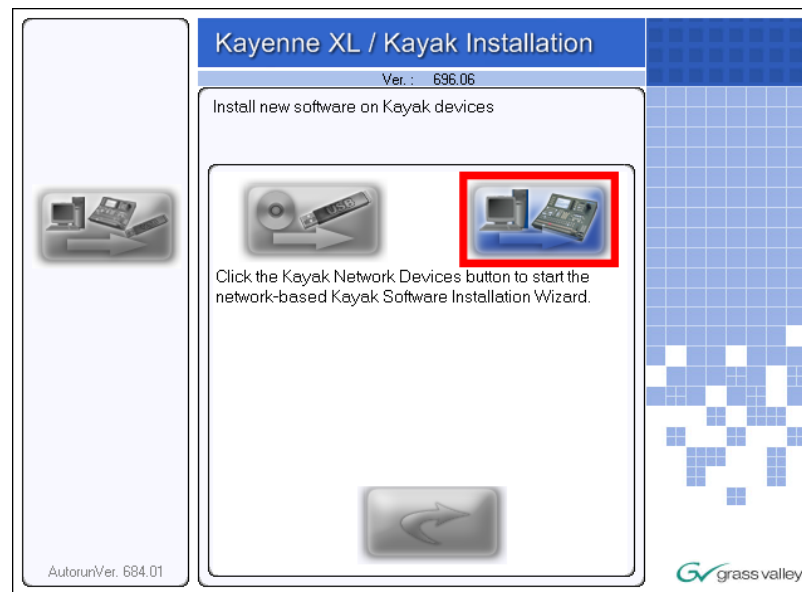
- From the **CD Installer Welcome screen** click on the **Install new software** button (third from the top on the left as shown in Figure below):

Figure 8. Software installation



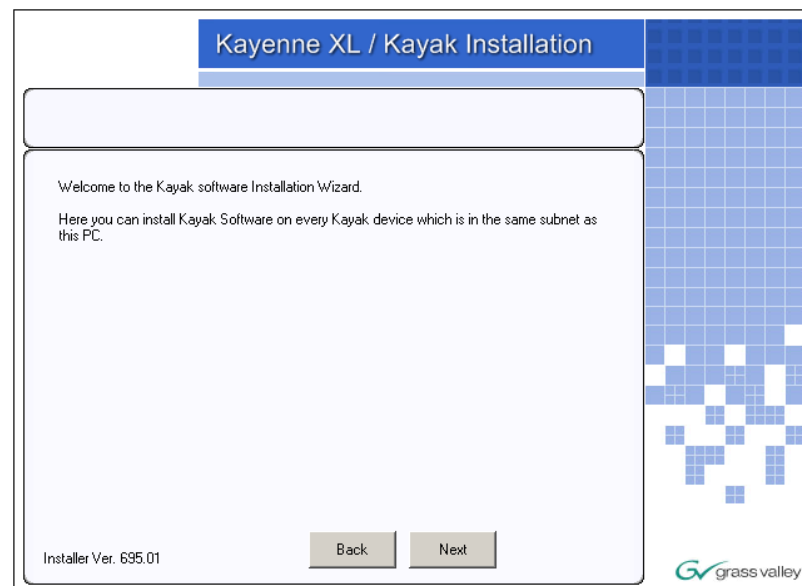
- The Install new software selection screen is displayed. Click on **Network Devices** button on the right to install software over the network.

Figure 9. Network Devices



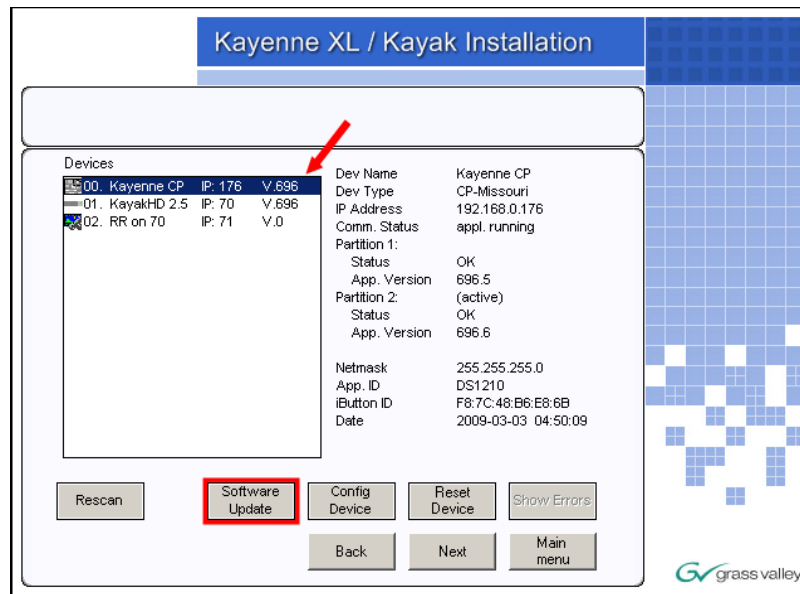
- In the **Device Selection** screen every Kayak HD and Kayak devices connected to your computer's network are displayed here in the window. Click on a name in the list to select a device for installation.
- Click on **Next**.

Figure 10. Next



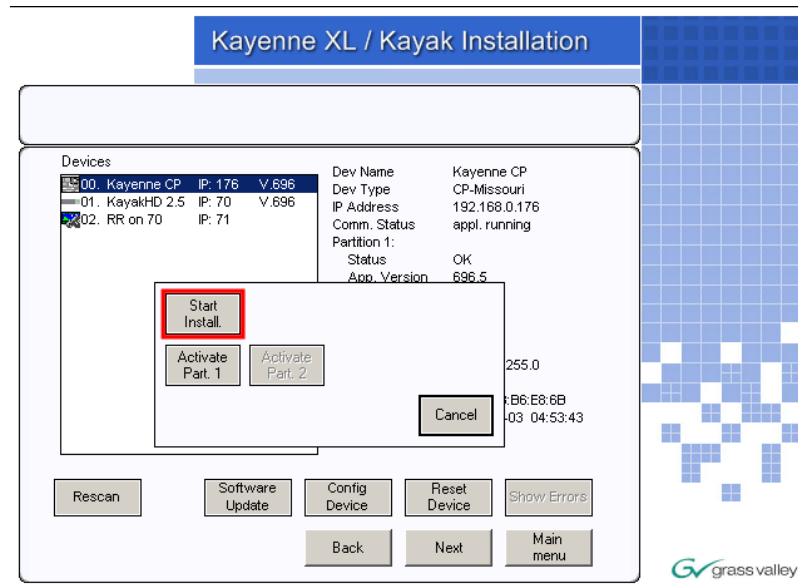
- Once you have selected the frame or the panel, click on **Software Update** below the device list to start the software installation.

Figure 11. Software Update



- Select **Start Install** to start the software installation on the selected device.

Figure 12. Start Installation



- Confirm with **Yes**. The installation progress will be shown at the top of the screen.
- Confirm the reboot with **Yes** to complete the software installation.

Figure 13. Confirm

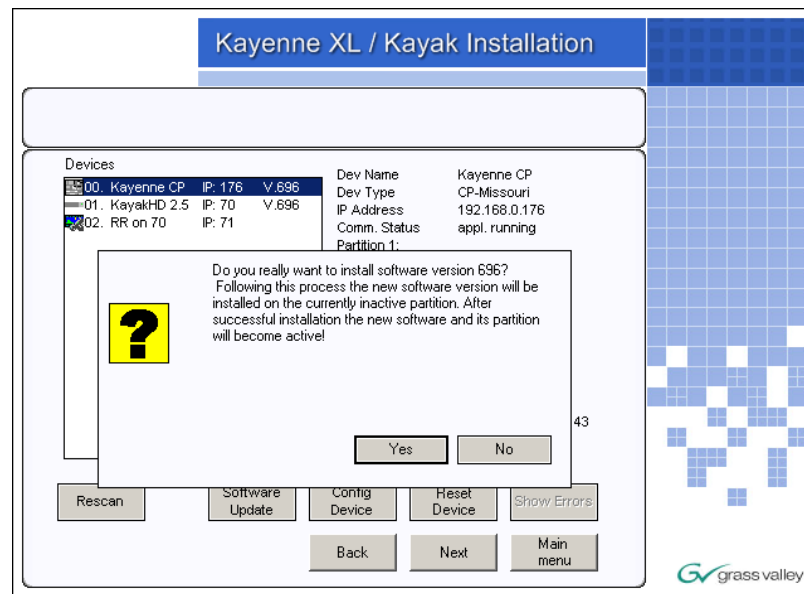


Figure 14. Progress bar Software update

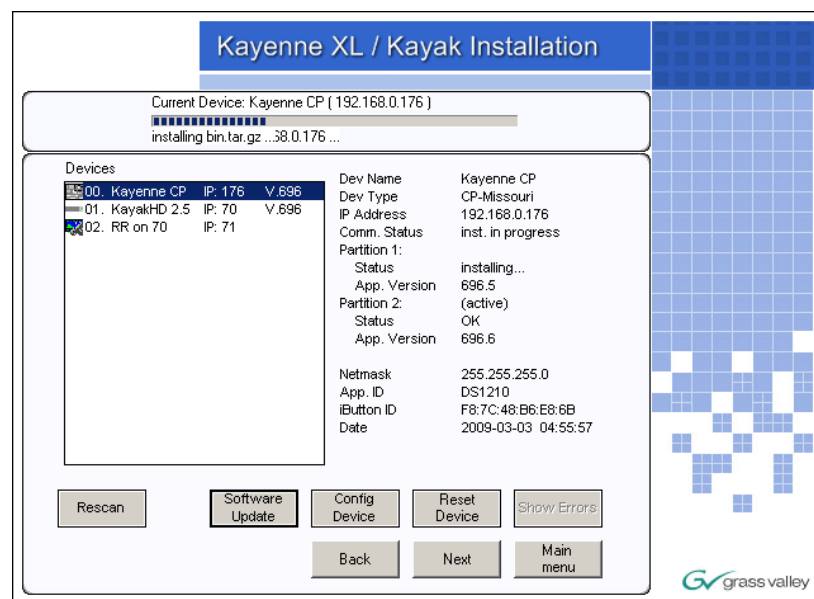


Figure 15. Reset device

