



# **mxGUI Installation Manual**

## **Release 4-14-0-0**

Product series: mc<sup>2</sup> series / Nova73 HD

Version: 1.0

Revision 08.08.2011

### **Copyright**

All rights reserved. Permission to reprint or electronically reproduce any document or graphic in whole or in part for any reason is expressly prohibited, unless prior written consent is obtained from the Lawo AG.

All trademarks and registered trademarks belong to their respective owners. It cannot be guaranteed that all product names, products, trademarks, requisitions, regulations, guidelines, specifications and norms are free from trade mark rights of third parties.

All entries in this document have been thoroughly checked, however no guarantee for correctness can be given. Lawo AG cannot be held responsible for any misleading or incorrect information provided throughout this manual.

Lawo AG reserves the right to change specifications at any time without notice

© Lawo AG, August 2011



# Contents

1	Introduction .....	5
2	mxGUI on Windows .....	5
2.1	Removing previous versions of mxGUI and Sun VirtualBox .....	5
2.2	Installing mxGUI and Sun VirtualBox .....	5
2.2.1	Preconditions .....	5
2.2.2	The mxGUI installation .....	6
2.2.3	The Sun VirtualBox Installation .....	11
2.2.4	Restarting your computer .....	16
2.3	Starting the mxGUI .....	17
2.3.1	Starting the mxGUI for the first time .....	18
2.4	Downdating to a previous versions of mxGUI and Sun VirtualBox .....	22
3	mxGUI on Mac OSX .....	23
3.1	Removing previous versions of mxGUI .....	23
3.2	Installing mxGUI .....	23
3.2.1	Preconditions .....	23
3.2.2	The mxGUI installation .....	24
3.3	Starting the mxGUI .....	28
3.3.1	Starting the mxGUI for the first time .....	28
3.4	Downdating to a previous versions of mxGUI and Sun VirtualBox .....	31
4	Important Notes Release 4-12-0-0 .....	32
4.1.1	Default location of mxGUI user share has changed .....	32



## 1 Introduction

This document describes how to install mxGUI on Windows XP, Windows Vista, Windows 7 and Mac OSX for Release 4-14-0-0.

Please follow all chapters from the beginning.

## 2 mxGUI on Windows

This chapter is for the installation and registration procedure of mxGUI on Windows operated systems.

### 2.1 Removing previous versions of mxGUI and Sun VirtualBox

Remove any previously installed version of mxGUI and/or Sun VirtualBox from your computer using Start->Settings->Control Panel->Add or Remove Programs and restart the computer.

### 2.2 Installing mxGUI and Sun VirtualBox

#### 2.2.1 Preconditions

To run the installation you will need:

- A Windows-PC (Windows XP, Vista or 7) with and internet connection  
Minimal System Requirements:
  - 1,5 GHz processor
  - RAM 1,5GB (Win XP), RAM 2GB (Windows Vista and Windows 7)
  - 200MB hard disk space
  - Windows XP and Windows Vista 32bit and Windows 7 32bit and 64 bit
- The mxGUI\_setup.exe executable.

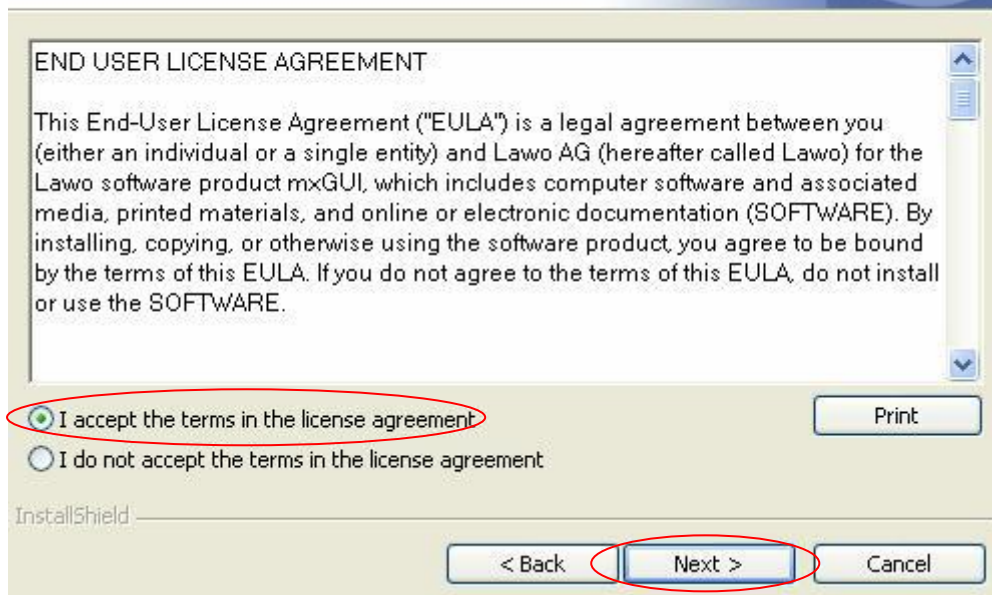
## 2.2.2 The mxGUI installation



Read and accept the end user license agreement for mxGUI.

**License Agreement**

Please read the following license agreement carefully.



**END USER LICENSE AGREEMENT**

This End-User License Agreement ("EULA") is a legal agreement between you (either an individual or a single entity) and Lawo AG (hereafter called Lawo) for the Lawo software product mxGUI, which includes computer software and associated media, printed materials, and online or electronic documentation (SOFTWARE). By installing, copying, or otherwise using the software product, you agree to be bound by the terms of this EULA. If you do not agree to the terms of this EULA, do not install or use the SOFTWARE.

☒ I accept the terms in the license agreement ☐ I do not accept the terms in the license agreement

Print

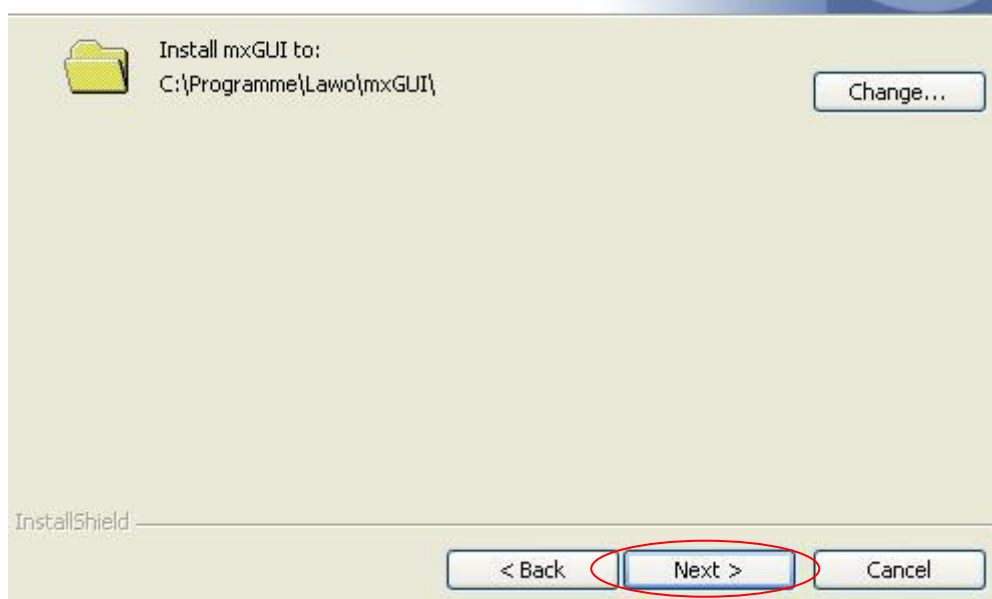
< Back Next > Cancel

InstallShield

Select an installation folder for mxGUI.

**Destination Folder**

Click Next to install to this folder, or click Change to install to a different folder.



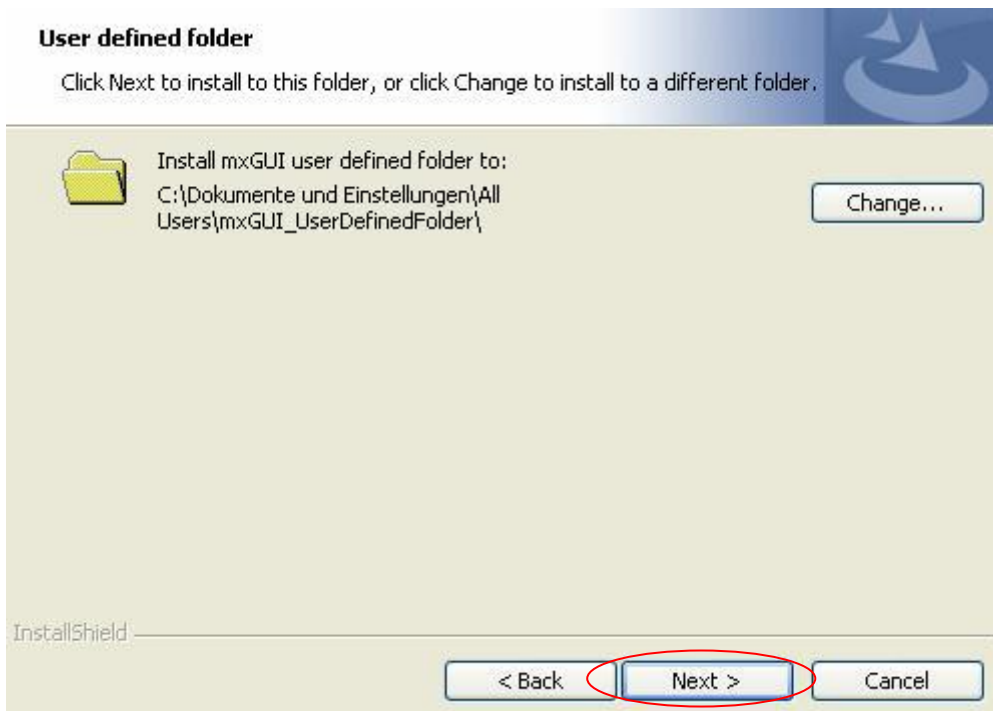
Install mxGUI to:  
C:\Programme\Lawo\mxGUI\

Change...

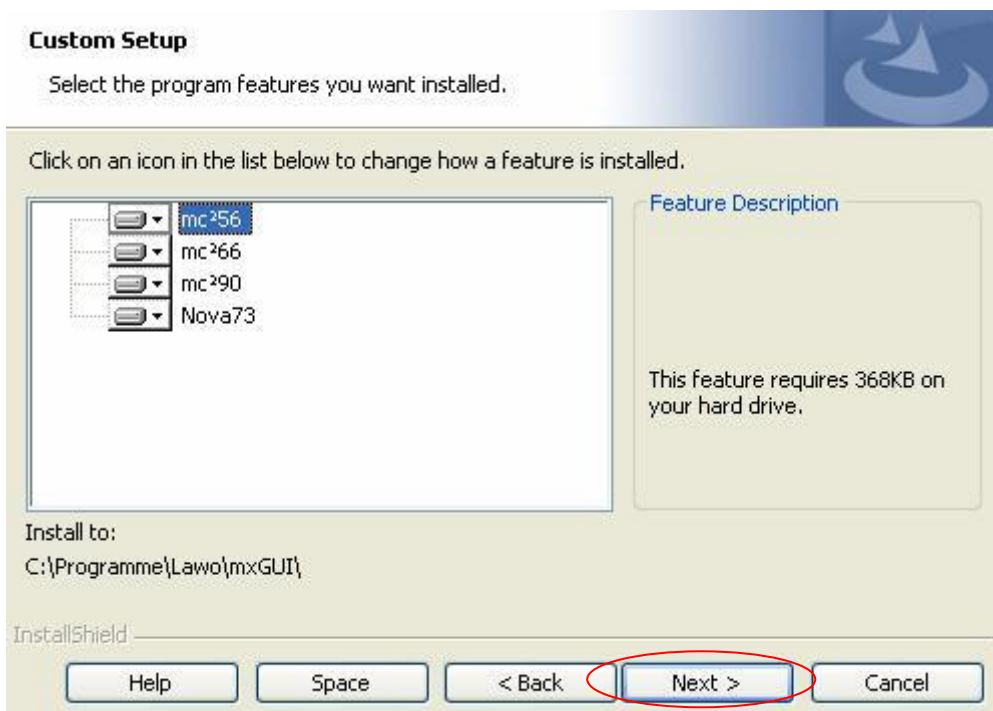
< Back Next > Cancel

InstallShield

Select a folder for mxGUI configuration and data.



Select the desired mxGUI features that should be installed. Please choose carefully as additional features cannot be installed at a later point in time, without performing a complete reinstallation of mxGUI and Sun VirtualBox.





Please review your settings and click "Install" to begin the installation.

### Ready to Install the Program

The wizard is ready to begin installation.

If you want to review or change any of your installation settings, click Back. Click Cancel to exit the wizard.

Current Settings:

Setup Type:

Custom

Destination Folder:

C:\Programme\Lawo\mxGUI\

User Information:

Name: EW

Company: Lawo AG

InstallShield

< Back

Install

Cancel

### Installing mxGUI

The program features you selected are being installed.



Please wait while the InstallShield Wizard installs mxGUI. This may take several minutes.

Status:

Copying new files



InstallShield

< Back

Next >

Cancel

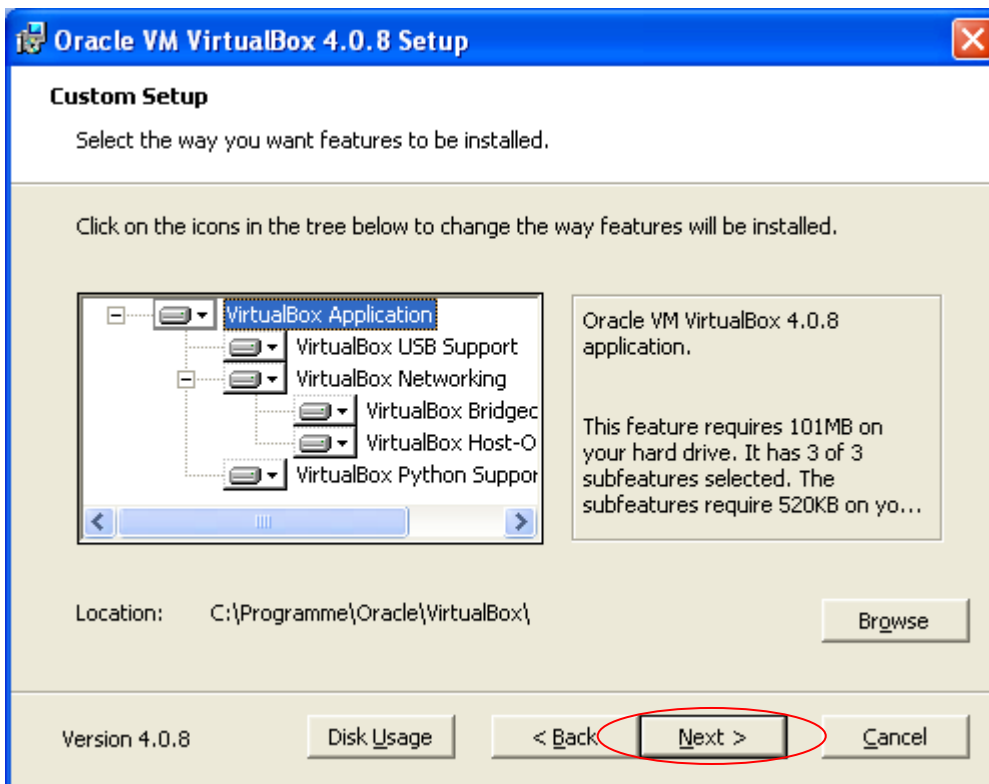
After the installation has completed, please click on “Finish” to exit the installation wizard.



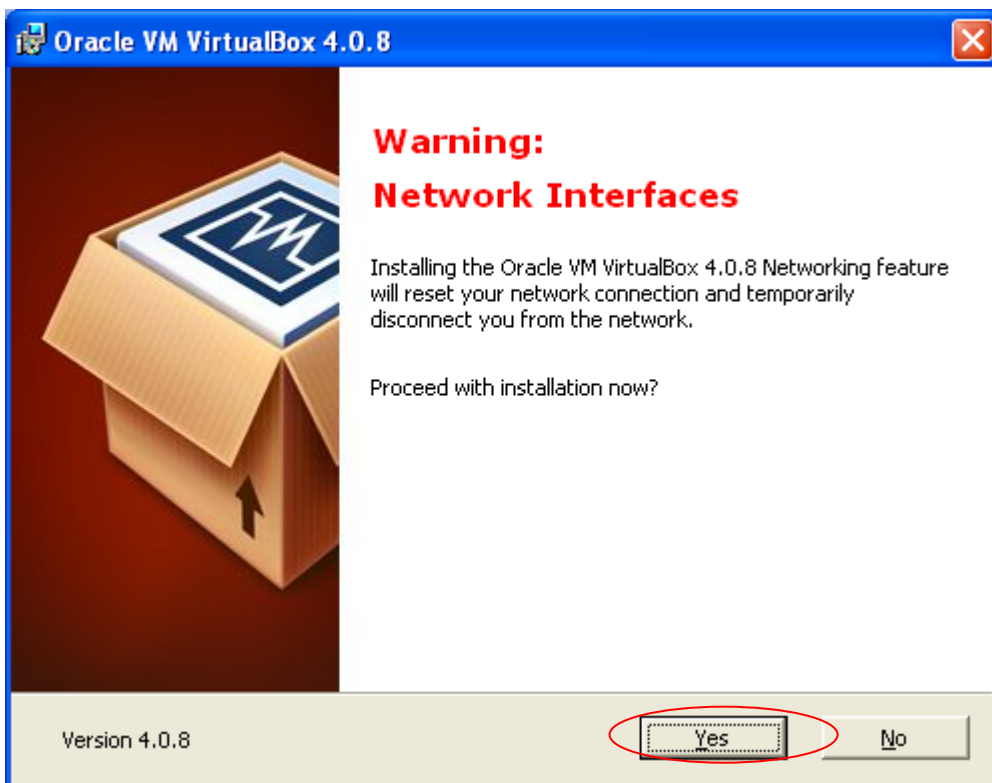
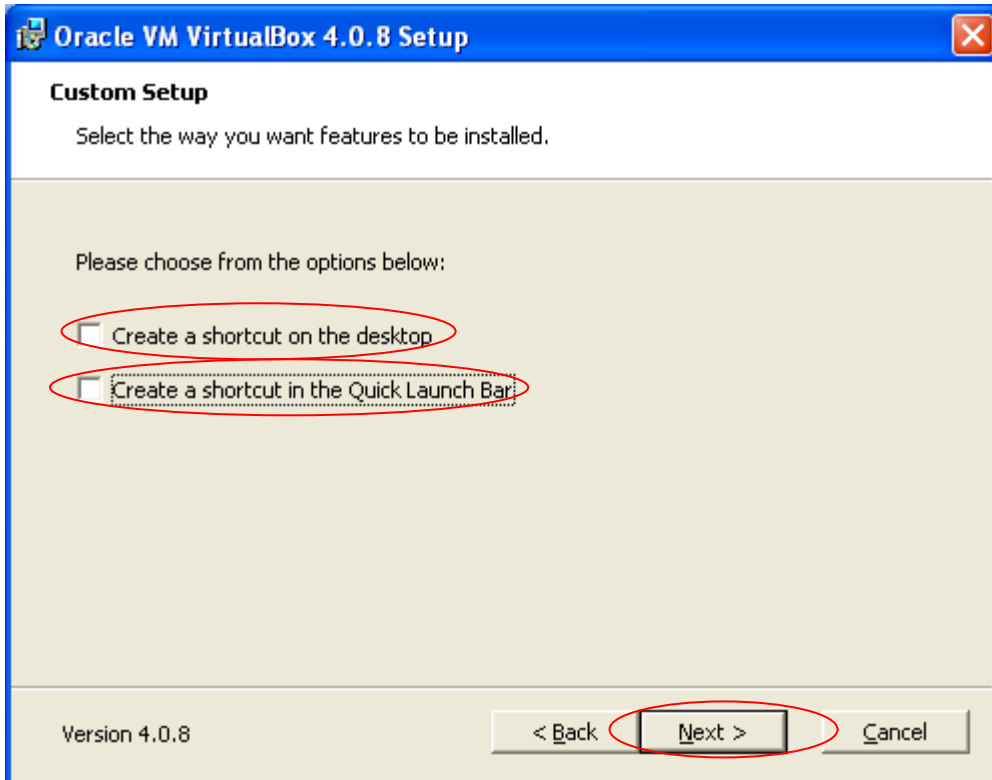
### 2.2.3 The Sun VirtualBox Installation



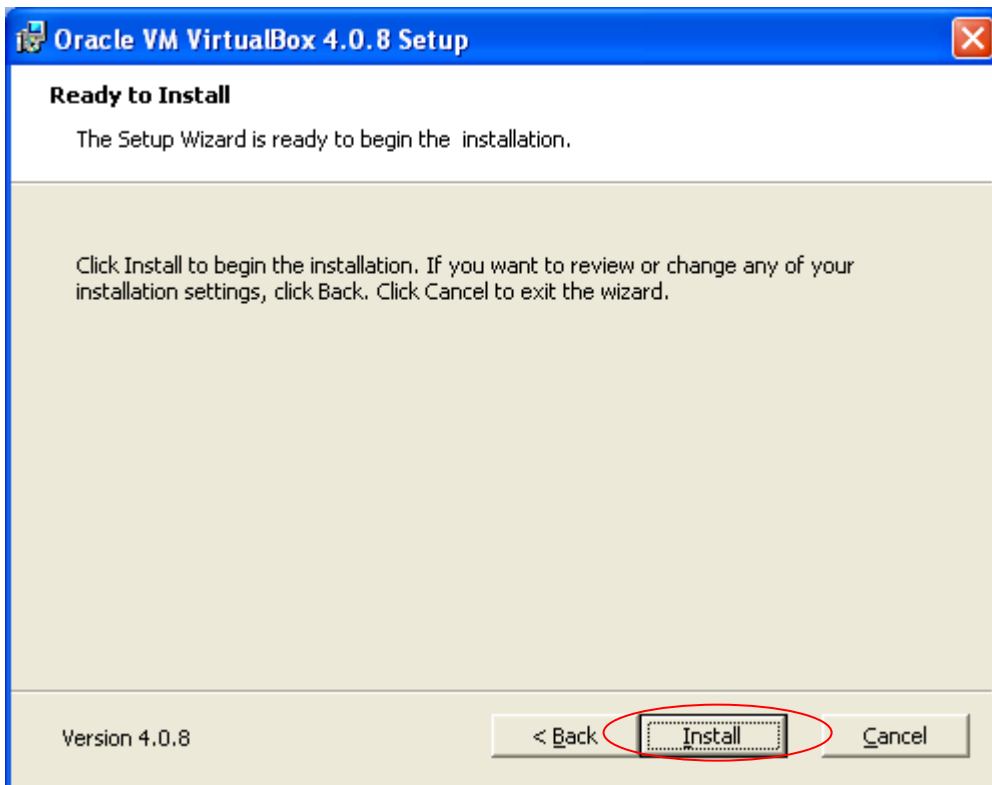
mxGUI requires all features of VirtualBox, therefore all features must be selected.



Deselect the desktop and the quick launch bar shortcut for VirtualBox.



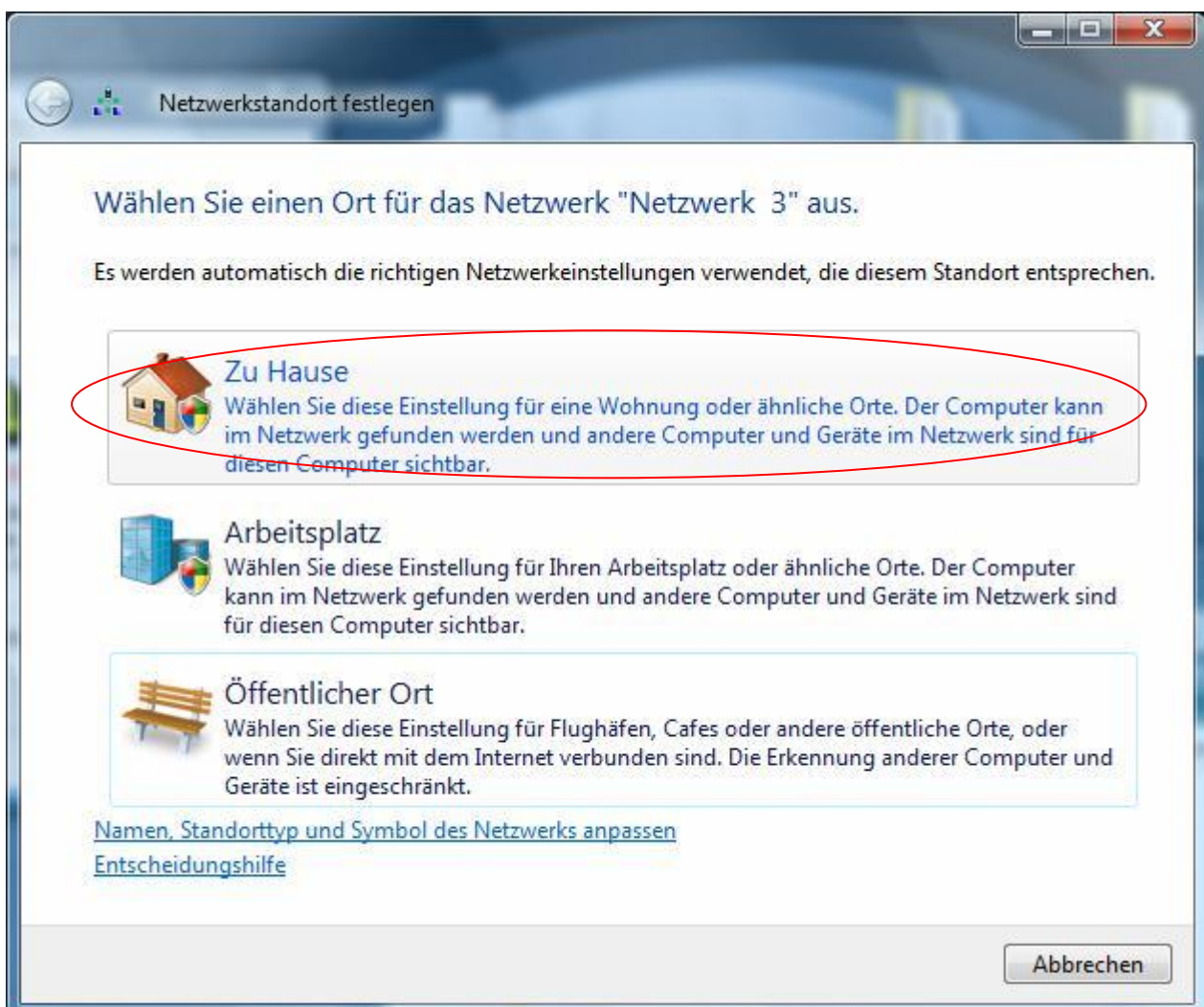
Click "Install" to begin the Sun VirtualBox installation.

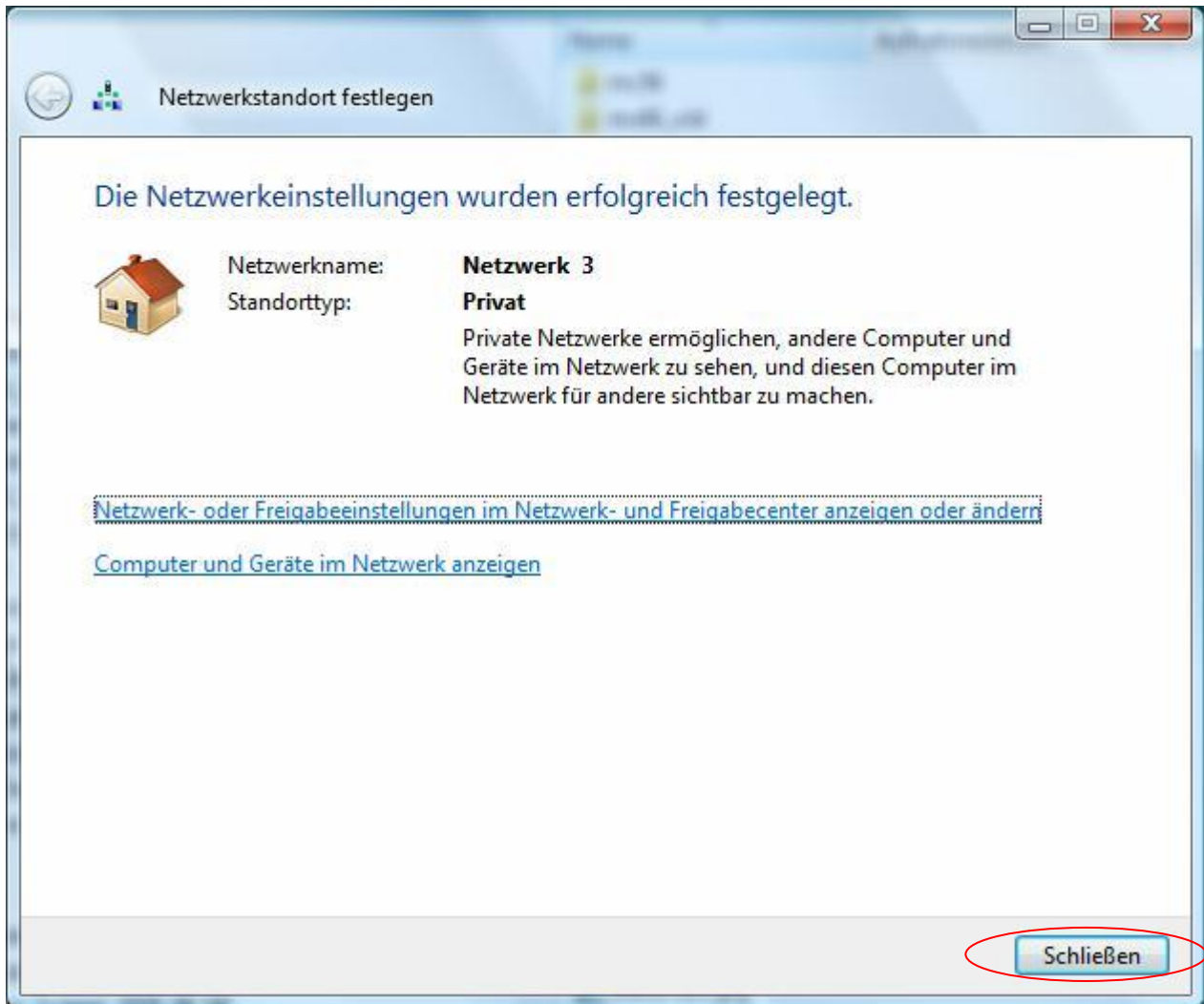


During the installation, several windows logo test dialogs will pop up. Please accept them all.

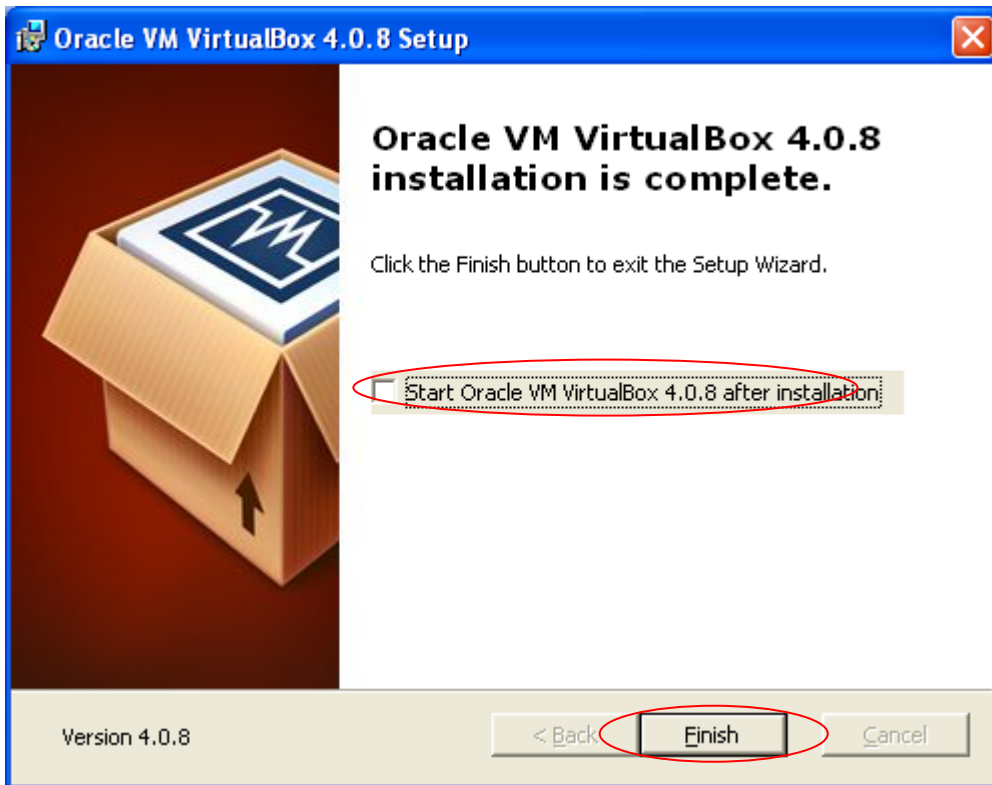


If you have installed Windows Vista you may be asked what location you want for the new virtual network interface. Please select the option "At home" in case the following dialog is presented to you.





Deselect the “Start Sun VirtualBox after installation” checkbox and finish the Sun VirtualBox Installation.



#### 2.2.4 Restarting your computer

Restart your computer after the installation has completed.



## 2.3 Starting the mxGUI

After the Installation you can start the mxGUI either with the mxGUI icon on your desktop, or through Start->Programs->Lawo->mxGUI->mxGUI.

### **Warning!**

The console window of mxGUI is necessary. Please don't close it as it will shut down your mxGUI and mxGUI will come up with ColdStart data the next time being started. It will close automatically if you quit mxGUI by "Application -> Quit" and close the "Selection" window.

### 2.3.1 Starting the mxGUI for the first time

If you start mxGUI for the first time after the installation, the final configuration of mxGUI will be performed. Please be patient, this may take some time.

During the final configuration of mxGUI is in progress one more Windows-Logo-Test Dialog will pop up. Please accept it, as it is required to run the mxGUI.



```

Lawo mxGUI
der\config\nova73\gui_global.tcl
Bearbeitete Datei: C:\Dokumente und Einstellungen\All Users\mxGUI_UserDefinedFol
der\config\nova73\mcx_gui_global.tcl
Die Vertrauensstellung zwischen dieser Arbeitsstation und der primären Domäne ko
nnte nicht hergestellt werden.
Setting up mxGUI user share ...
Diese freigegebene Ressource existiert nicht.

Sie erhalten weitere Hilfe, wenn Sie NET HELPMSG 2310 eingeben.

Setting up mxGUI user share ...
mxgui_user_share$ wurde erfolgreich freigegeben.

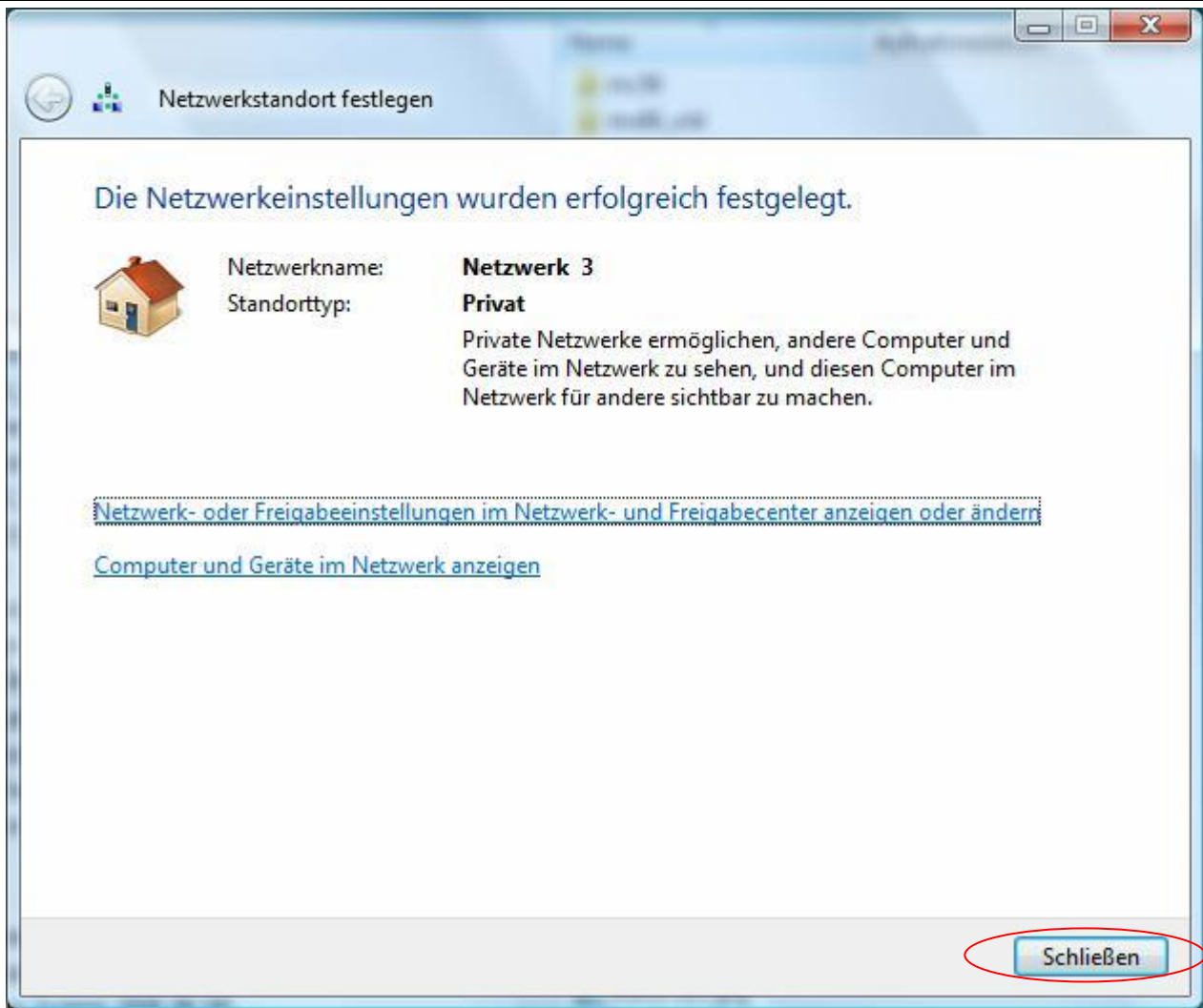
Bearbeitetes Verzeichnis: C:\Dokumente und Einstellungen\All Users\mxGUI_UserDef
inedFolder\shared_folder
Die Vertrauensstellung zwischen dieser Arbeitsstation und der primären Domäne ko
nnte nicht hergestellt werden.
Starting Xming-server
Creating virtual network device ...
WARNING: This may take some time
VirtualBox Command Line Management Interface Version 2.2.4
(C) 2005-2009 Sun Microsystems, Inc.
All rights reserved.

0%...
```



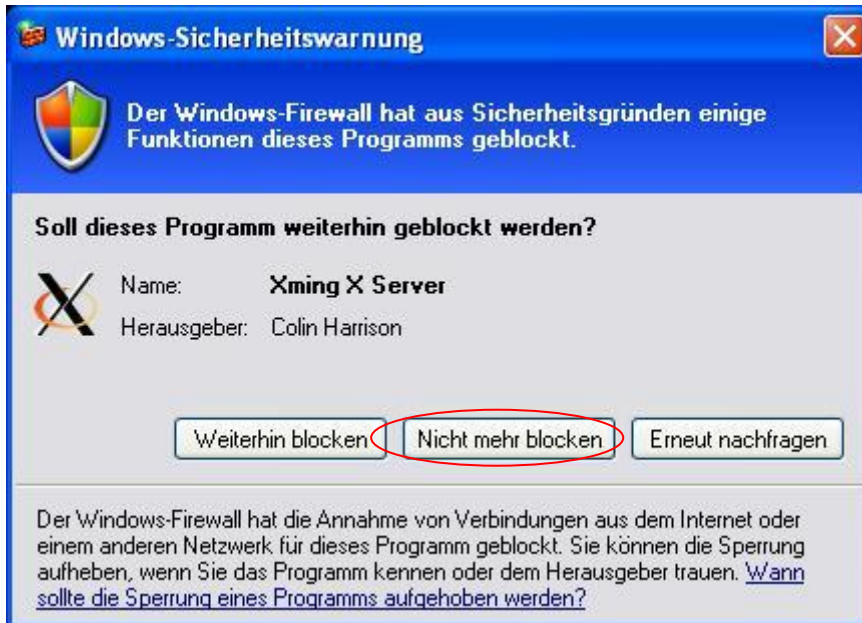
If you have installed Windows Vista you may be asked what location you want for the new virtual network interface. Please select the option "At home" in case the following dialog is presented to you.



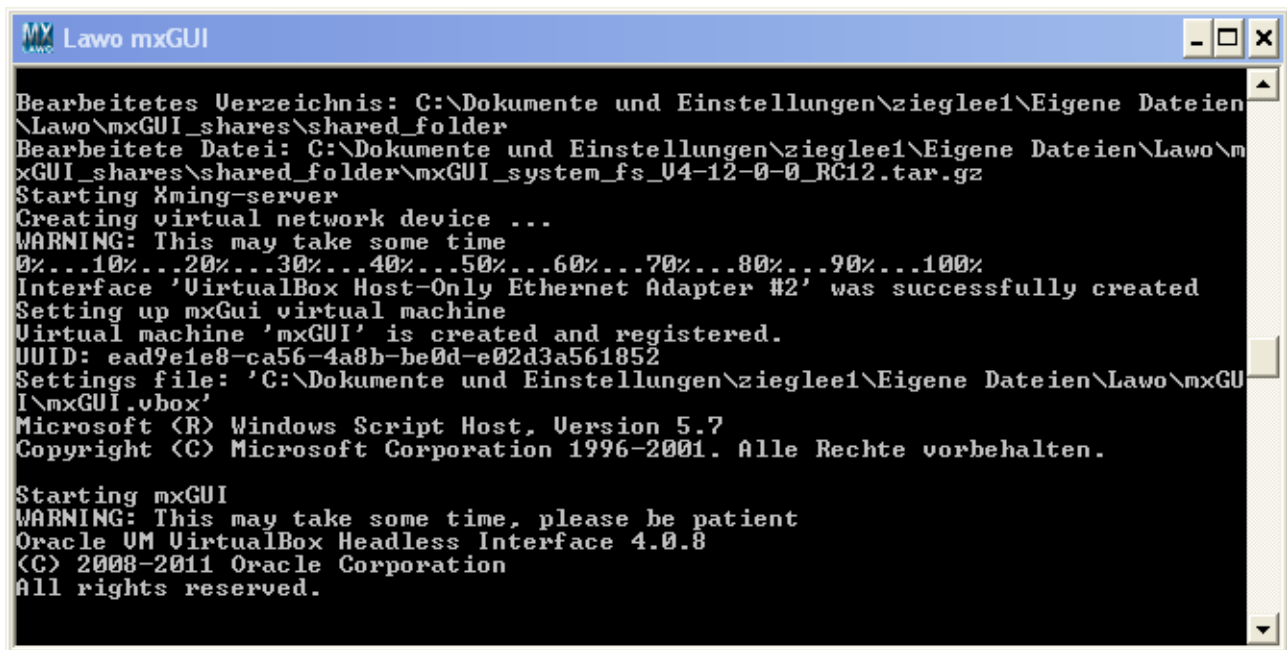


**Note:**

Your local firewall may ask you whether or not to block the application "Xming X Server". It is essential to allow network access for "Xming X Server". If Xming is blocked by a firewall, mxGUI will start up, but cannot show any dialogs and will quit on its own after a certain amount of time without interaction.



After the successful start of your brand new mxGUI you should see these two windows.



```
Lawo mxGUI
Bearbeitetes Verzeichnis: C:\Dokumente und Einstellungen\zieglee1\Eigene Dateien\
\Lawo\mxGUI_shares\shared_folder
Bearbeitete Datei: C:\Dokumente und Einstellungen\zieglee1\Eigene Dateien\Lawo\m
xGUI_shares\shared_folder\mxGUI_system_fs_v4-12-0-0_RC12.tar.gz
Starting Xming-server
Creating virtual network device ...
WARNING: This may take some time
0%...10%...20%...30%...40%...50%...60%...70%...80%...90%...100%
Interface 'VirtualBox Host-Only Ethernet Adapter #2' was successfully created
Setting up mxGui virtual machine
Virtual machine 'mxGUI' is created and registered.
UUID: ead9e1e8-ca56-4a8b-be0d-e02d3a561852
Settings file: 'C:\Dokumente und Einstellungen\zieglee1\Eigene Dateien\Lawo\mxGU
I\mxGUI.vbox'
Microsoft (R) Windows Script Host, Version 5.7
Copyright (C) Microsoft Corporation 1996-2001. Alle Rechte vorbehalten.

Starting mxGUI
WARNING: This may take some time, please be patient
Oracle VM VirtualBox Headless Interface 4.0.8
(C) 2008-2011 Oracle Corporation
All rights reserved.
```



The console window is necessary for internal operation and does not require any interaction.  
Your mxGUI is now usable. Select the desired product and press the “Start” button. Have fun.

## 2.4 Downdating to a previous versions of mxGUI and Sun VirtualBox

Remove the installed version of mxGUI and Oracle VirtualBox from your computer using Start->Settings->Control Panel->Add or Remove Programs and restart the computer.

After mxGUI and Oracle VirtualBox are removed, delete the .VirtualBox directory in your user profile folder. This will remove the entire configuration of VirtualBox, so be careful if you use it for something other than the mxGUI.

Now an old version of the mxGUI can be installed.

## 3 mxGUI on Mac OSX

This chapter is for the installation and registration procedure of mxGUI on Mac OSX operated systems.

### 3.1 Removing previous versions of mxGUI

Remove any previously installed version of mxGUI and if installed VirtualBox from your Mac by deleting mxGUI and VirtualBox from the Application folder and restart you Mac.

### 3.2 Installing mxGUI

#### 3.2.1 Preconditions

You have to register at Lawo Homepage to be able to access the Download area where you will find the latest version of mxGUI for OSX for download.

To run the installation you will need:

- A Mac with Snow Leopard and X11 installed (on the Installation CD of OSX under Optional Installs you can install, to check if X11 is installed Applications->Utility->X11 must be present) Minimal System Requirements:
  - RAM 2GB
  - 200MB hard disk space
  - OSX Snow Leopard
- The mxGUI\_OSX\_Installer-4-14-0-0.zip.



### 3.2.2 The mxGUI installation

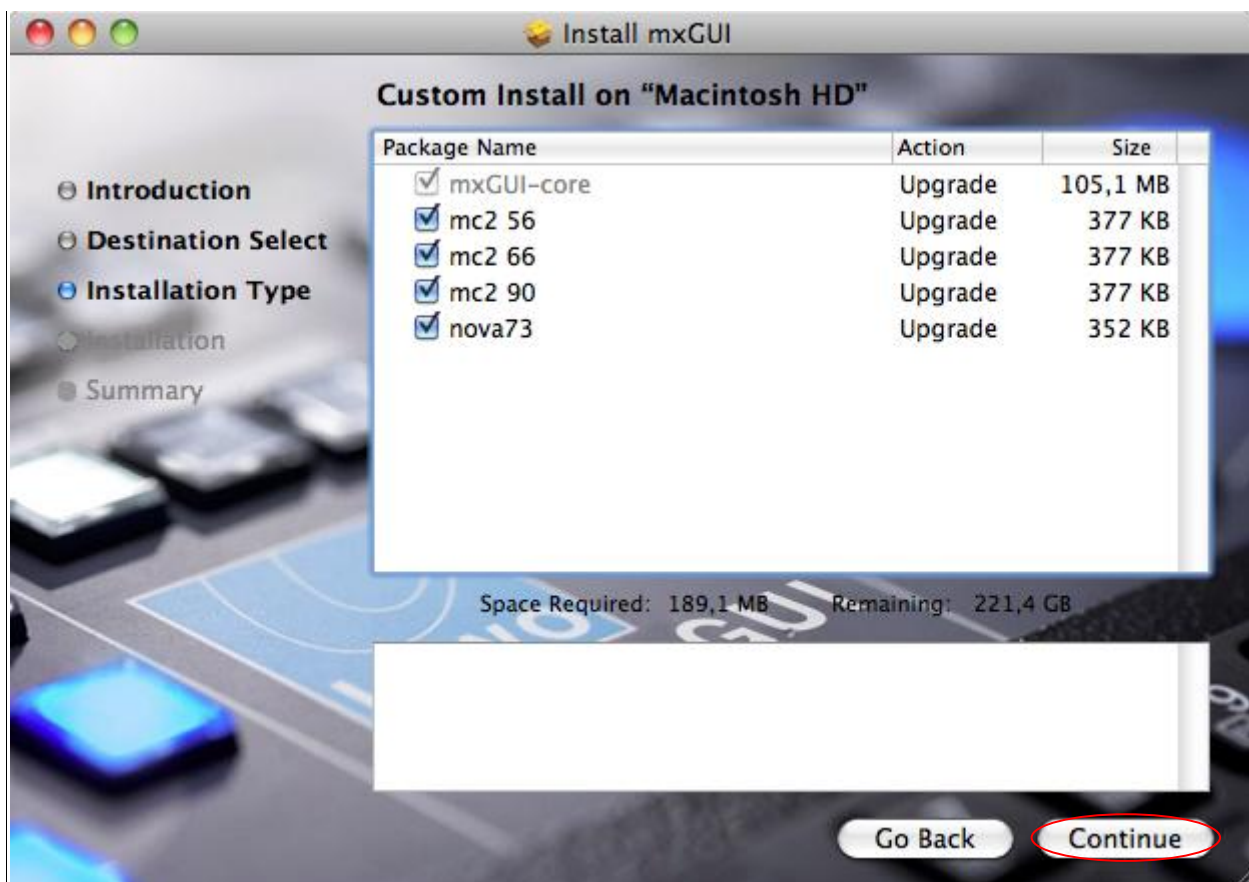
Extract the mxGUI\_OSX\_Installer-4-14-0-0.zip with the Finder and start the installer by double clicking on the extracted mxGUI.pkg. The installer will pop up.



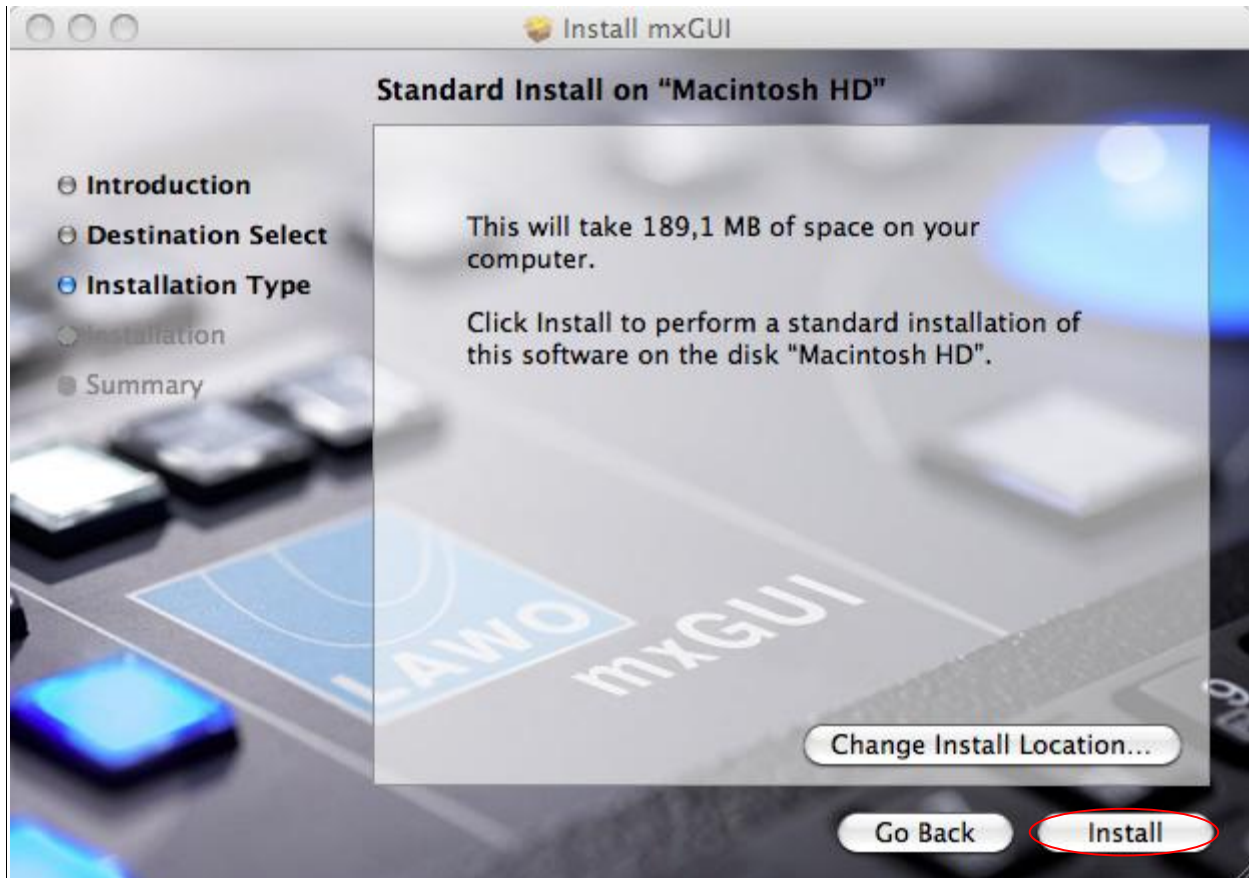




Select the desired mxGUI features that should be installed. Please choose carefully as additional features cannot be installed at a later point in time, without performing a reinstallation of mxGUI.



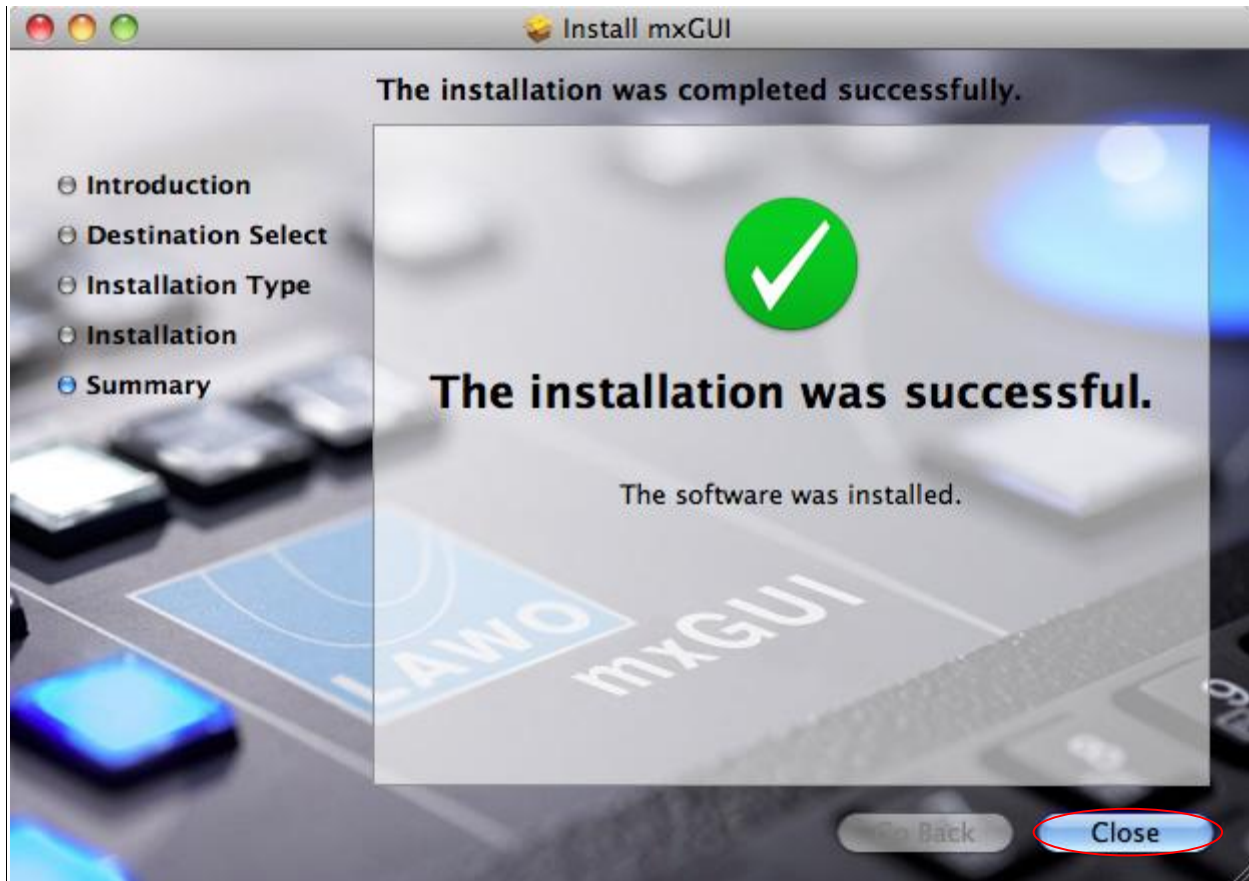
After you selected the mxGUI feature click "Install" to start the installation.



OSX now needs an user account with administration rights. After you entered the user the installation will begin.



After the installation has completed, please click on "Close" to exit the installer.



### 3.3 Starting the mxGUI

After the Installation you can start the mxGUI with the mxGUI entry in your Application Folder.

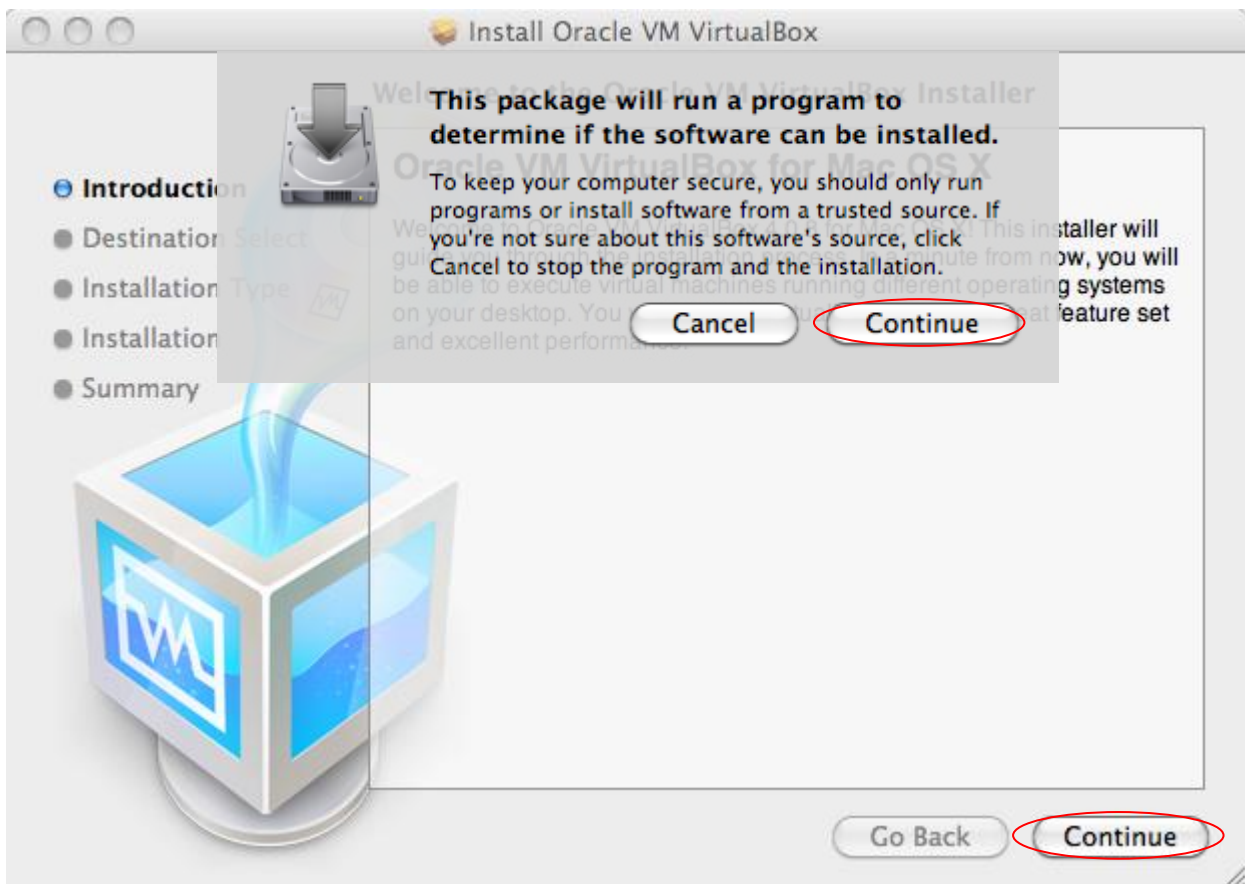
#### Warning!

The console window of mxGUI is necessary. Please don't close it till the mxGUI is running.

#### 3.3.1 Starting the mxGUI for the first time

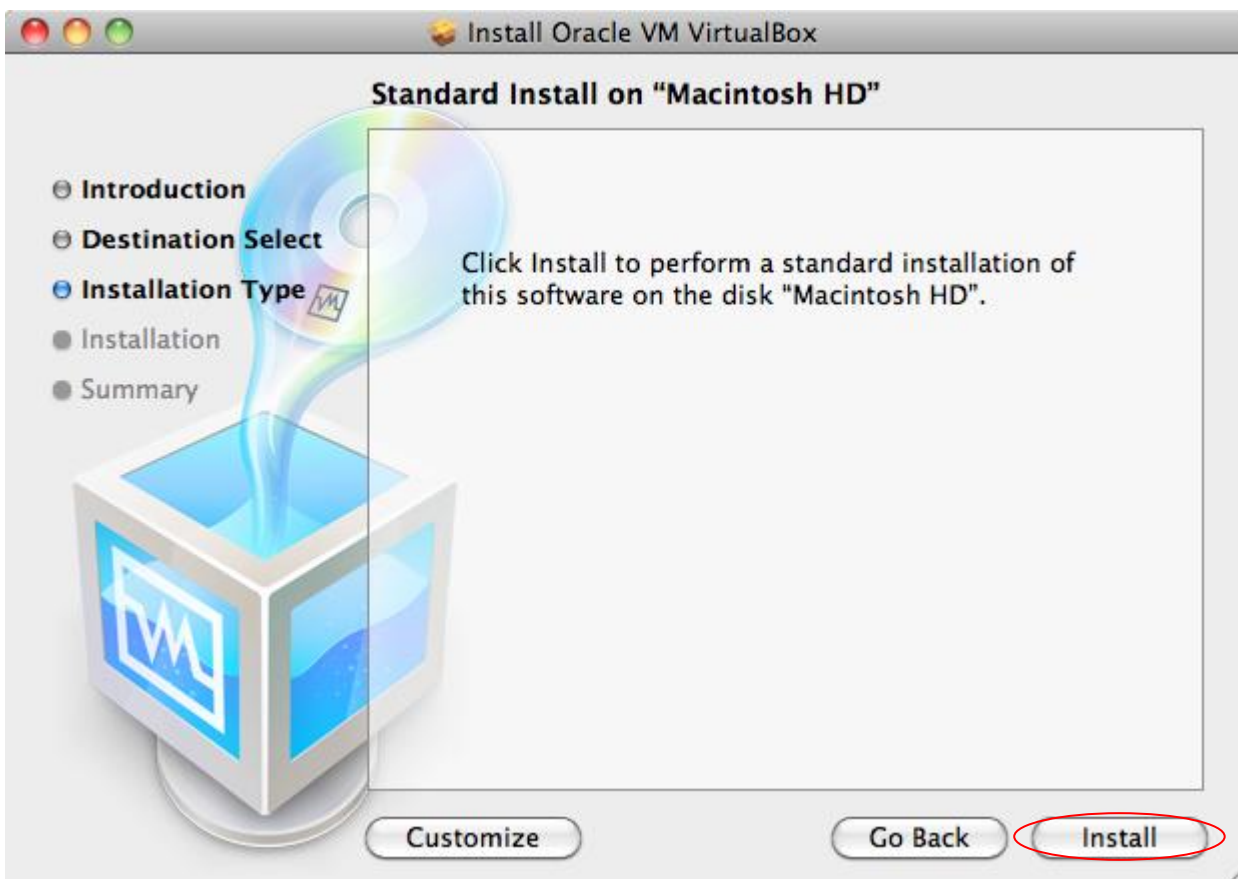
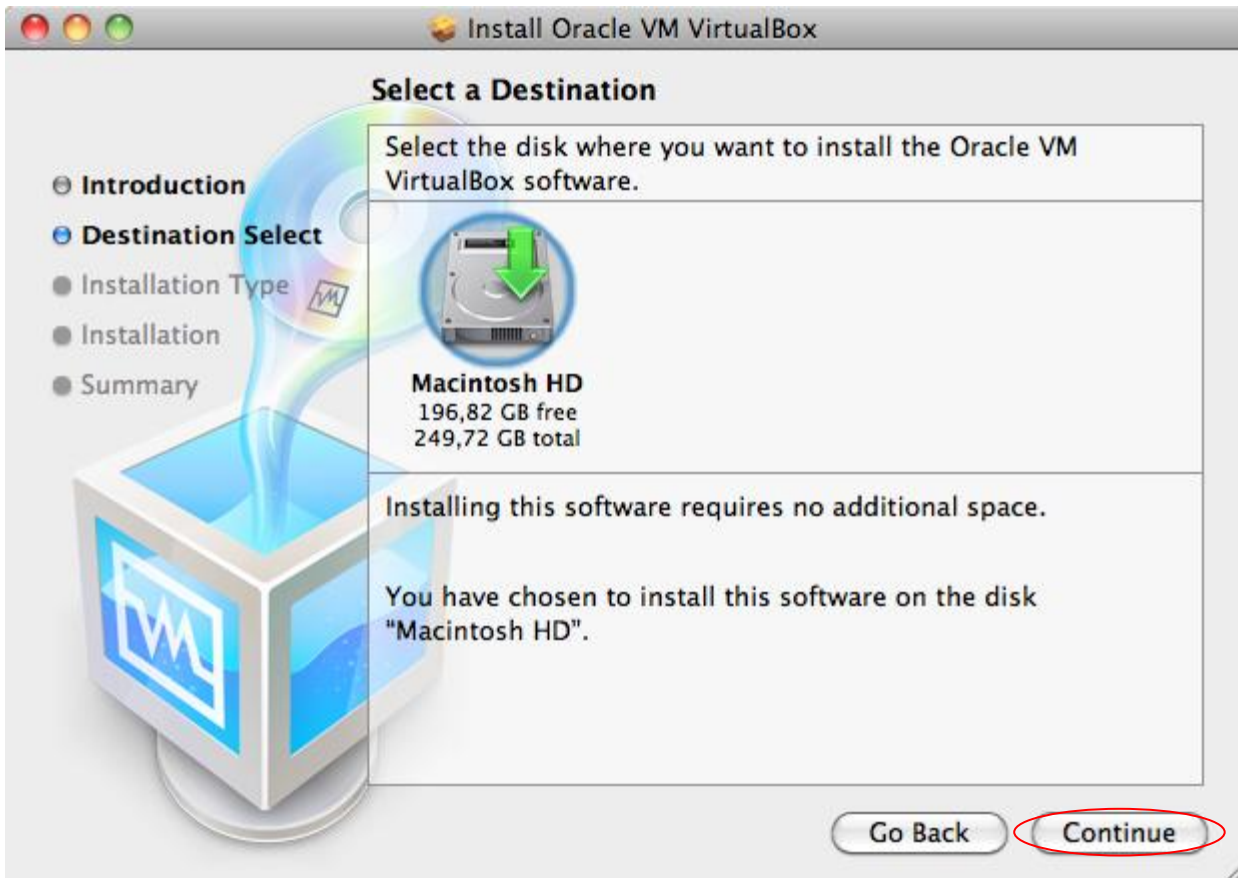
If you start mxGUI for the first time after the installation, Virtual Box will be installed and the final configuration of mxGUI will be performed.

The Virtual Box installer will popup. Please accept that you want to install the VirtualBox and continue.

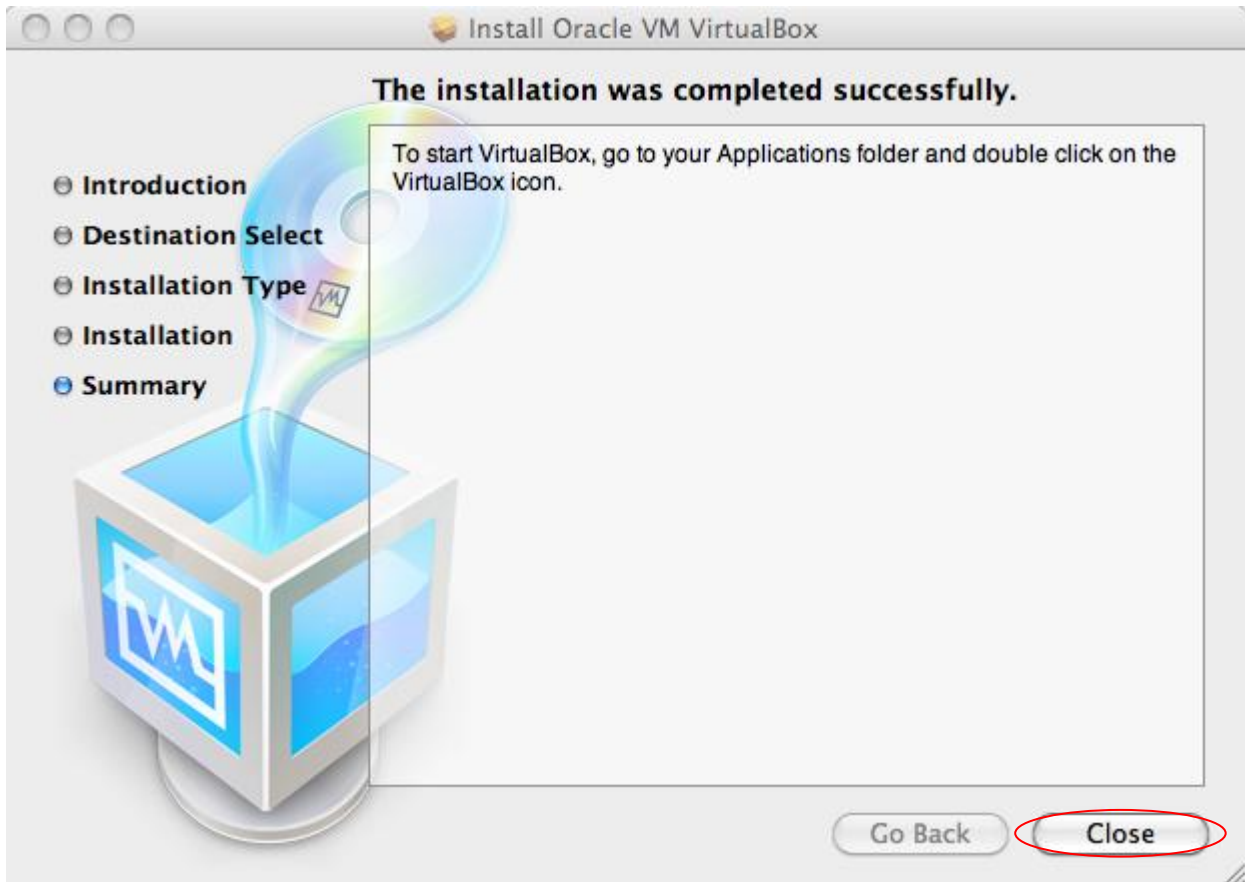




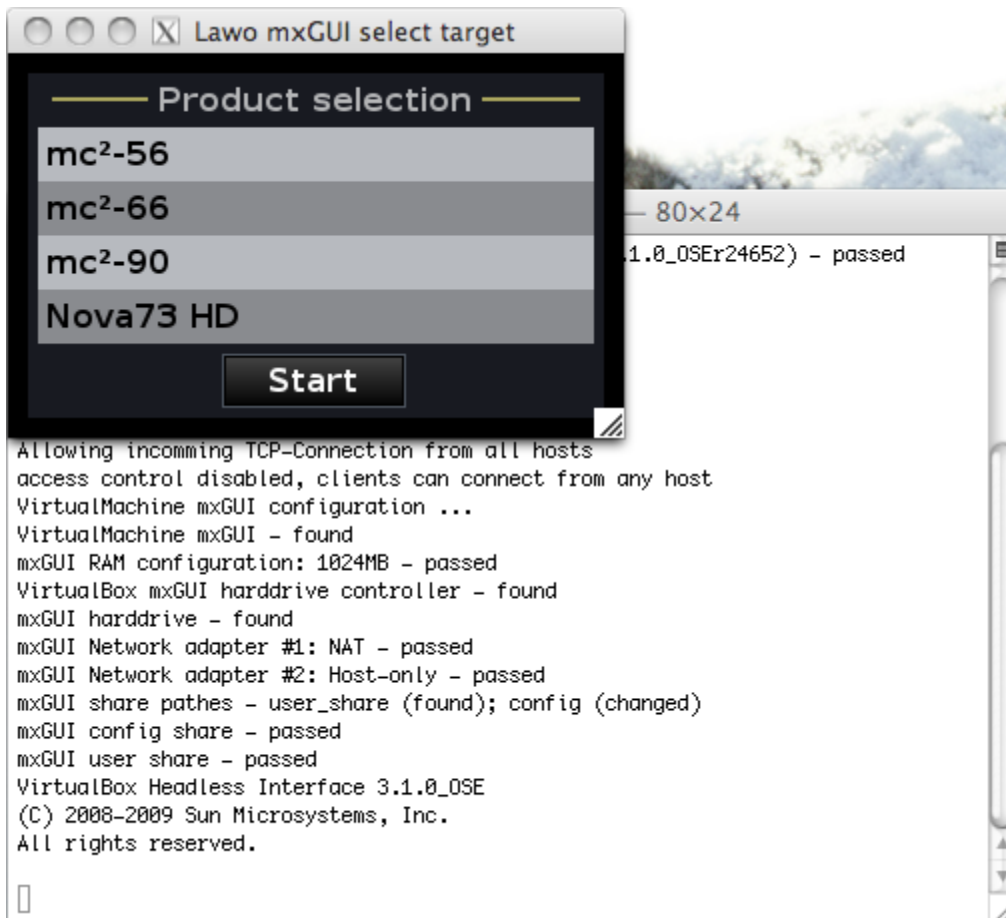
Select the desired destination for the VirtualBox installation and perform the standard installation.



After the successful VirtualBox installation close the installer.



After the successful start of your brand new mxGUI you should see these two windows.



The console window is necessary for internal operation and does not require any interaction. Your mxGUI is now usable. Select the desired product and press the “Start” button. Have fun.

### 3.4 Downdating to a previous versions of mxGUI and Sun VirtualBox

Remove the installed version of mxGUI and Oracle VirtualBox from your Mac by deleting them from your Application folder.

Now an old version of the mxGUI can be installed.

## 4 Important Notes Release 4-12-0-0

### 4.1.1 Default location of mxGUI user share has changed

The default mxGUI user share has changed. It can now be found in the user's Home Directory.

Defaults for:

- Windows XP: <HOMEPATH>\Eigene Dateien\Lawo\mxGUI\_shares
- Windows Vista: <HOMEPATH>\My Documents\Lawo\mxGUI\_shares
- Windows 7: <HOMEPATH>\My Documents\Lawo\mxGUI\_shares
- OSX: <HOMEPATH>\Library\Lawo\mxGUI\_shares

To use the existing configurations from the old mxGUI share path, the user has to copy them manually to the new location.

With the new default path, every user has his own mxGUI share and so its own configuration of the mxGUI. If the old behaviour is required (i.e. that all users use the same mxGUI configuration), the default path of the mxGUI share must be set outside the home directory during the installation process.





