

# Monitor\_Update

USER'S GUIDE

Version 1.0

---

# Table of Contents

<b>Overview .....</b>	<b>3</b>
Features .....	3
Supported Devices .....	3
Computer Environment .....	3
<b>Preparation .....</b>	<b>4</b>
Installing Monitor_Update .....	4
Connecting the Monitor to the Computer .....	5
Downloading the Updating File .....	5
<b>Operations .....</b>	<b>5</b>
Starting Monitor_Update .....	5
Updating the monitor .....	6
<b>Appendix .....</b>	<b>8</b>
Error Messages .....	8
Error Codes .....	9

---

# Overview

---

## Features

Monitor\_Update is software for updating the software and the FPGA of multiple monitors at the same time.

---

## Supported Devices

This software is compatible with the following equipment (as of July, 2014):

### Monitors

#### PVM-A series

- PVM-A250
- PVM-A170

#### LMD-A series

- LMD-A240
- LMD-A220
- LMD-A170

---

## Computer Environment

A computer with the following specification is needed.

### Operating system (OS)

Microsoft Windows 7 Professional Edition or Ultimate Edition (64 or 32-bit version), with SP1

Windows 8 (64 or 32-bit version) or Windows 8 Pro (64 or 32-bit version)

Windows 8.1 (64 or 32-bit version) or Windows 8.1 Pro (64 or 32-bit version)

### CPU

Intel Celeron 1 GHz or higher

### Memory

1 GB or more (Windows 7/8/8.1)

### Display

1,024 × 768 or more (Hi Color 16 bit or more)

### Hard disk

100 MB free space or more

### Network

Internet connection

### Middleware

.NET Framework 3.5 SP1 (Available from the Microsoft website)

### Note

- The above computer environment does not guarantee correct operation on all computers or operating systems.
- Use the Middleware “.NET Framework” that is installed as standard on your OS (Windows 7: Ver. 3.5/Windows 8: Ver. 4.0).  
If it is not installed, the Monitor\_Update software cannot be started.
- Only when updating a software of the monitor from version 1.0 to 1.1, the monitor settings are returned to the default setting. Set or adjust the monitor again if necessary.  
We recommend you to make preparations, such as the recording of required adjustment values, before updating the monitor.

Screen shots of windows shown in this USER’S GUIDE are samples using Windows 7. Their appearance may differ depending on the operating system you use.

## NOTICE TO USERS

© 2014 Sony Corporation. All rights reserved. This manual or the software described herein, in whole or in part, may not be reproduced, translated or reduced to any machine readable form without prior written approval from Sony Corporation.

SONY CORPORATION PROVIDES NO WARRANTY WITH REGARD TO THIS MANUAL, THE SOFTWARE OR OTHER INFORMATION CONTAINED HEREIN AND HEREBY EXPRESSLY DISCLAIMS ANY IMPLIED WARRANTIES OF MERCHANTABILITY OR FITNESS FOR ANY PARTICULAR PURPOSE WITH REGARD TO THIS MANUAL, THE SOFTWARE OR SUCH OTHER INFORMATION. IN NO EVENT SHALL SONY CORPORATION BE LIABLE FOR ANY INCIDENTAL, CONSEQUENTIAL OR SPECIAL DAMAGES, WHETHER BASED ON TORT, CONTRACT, OR OTHERWISE, ARISING OUT OF OR IN CONNECTION WITH THIS MANUAL, THE SOFTWARE OR OTHER INFORMATION CONTAINED HEREIN OR THE USE THEREOF.

Sony Corporation reserves the right to make any modification to this manual or the information contained herein at any time without notice. The software described herein may also be governed by the terms of a separate user license agreement.

- Microsoft, Windows, Windows 7, Windows 8 and Windows logo are either trademarks or registered trademarks of Microsoft Corporation in the United States and/or other countries.
- Intel is the trademark or registered trademark of Intel Corporation in the United States and/or other countries.
- All other company names and product names mentioned here may be the trademarks or registered trademarks of their respective companies. In this manual, TM and R marks are not specified.

# Preparation

## Installing Monitor\_Update

Consult your nearest Sony dealer when you use this software.

### Note

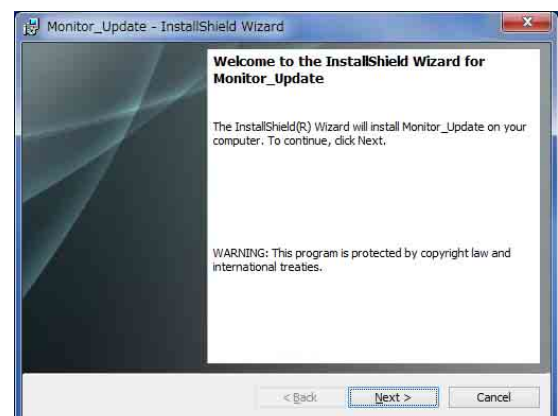
- Windows administrator privileges are needed to install this software. Log in with an administrator account.
- Depending on your environment, permission settings in Windows Firewall or antivirus software may be required. If a Windows Firewall warning is displayed, select “Unblock” when prompted. Alternatively, set the Monitor\_Update to Exceptions for Windows Firewall in Control Panel. If you are using antivirus software, refer to the antivirus software manual and set permission.

- 1 Double click the “Monitor\_Update.exe” to start the installer.
- 2 Select the language you want to use, then click “OK”.



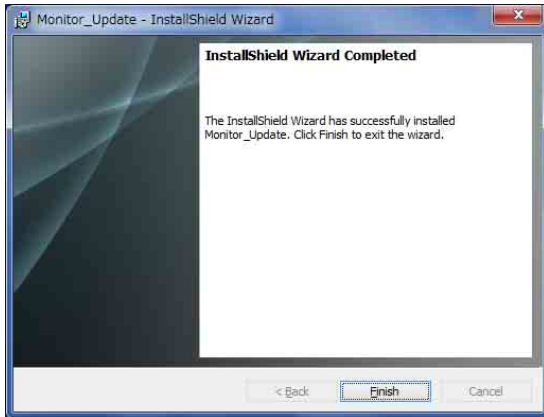
Wait for a moment until the installation window appears.

- 3 Follow the instructions displayed in the window to install the software.



When the message about the license agreement appears, read it, then select “I accept the terms of the license agreement” to continue installation.

- 4 When the message “Monitor\_Update was successfully installed.” appears, click “Finish”.



The installation is complete.

---

## Connecting the Monitor to the Computer

Two types of connections are available: LAN, which connects your computer and monitor via a network, and peer to peer, which connects your computer directly to the monitor with a LAN cable.

For details, refer to the instruction manual of the monitor.

You can connect up to 253 monitors via one network.

---

## Downloading the Updating File

Obtain the updating file before you start the monitor updating. Consult your nearest Sony dealer for details on how to obtain it.

---

# Operations

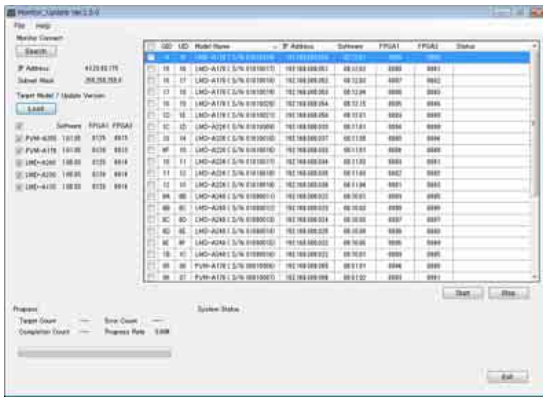
### Note

- The required time for updating 1 monitor is as follows: about 10 minutes for software updating, about 30 minutes for FPGA updating, about 40 minutes in total. The updating time will vary depending on the updating content.  
This software updates up to 5 monitors at the same time. Make sure that you can ensure enough time for all the monitors you want to update beforehand. If you cannot ensure time for all monitors, split the monitors into groups of 5 monitors and schedule the update for each group.
- Follow these instructions during monitor updating.
  - Do not turn off or disconnect the power of the monitor.
  - Do not disconnect the network.
  - Do not use the DC power supply for the monitor. Failure to follow these instructions may result in an update error and the monitor may become unable to start.
- This software cannot be used if the computer is in sleep mode. Before using this software, make sure automatic sleep mode is disabled. If the computer goes into sleep mode, updating may fail.
- If monitor updating fails, the progress status is displayed in the “Errors” area. You still can retry updating as long as the monitor is turned on. Check the connections and that there are no other network programs running, then retry updating.
- Consult your nearest Sony dealer when a monitor update error occurs and the monitor becomes unable to start.

---

## Starting Monitor\_Update

From the “Start” menu on your computer, select “All Programs”, “Sony Monitor Utilities”, then “Monitor\_Update”. The software starts and the following window is displayed.



## To quit Monitor\_Update

Select “File”, then “Exit”.

## To check the version of Monitor\_Update

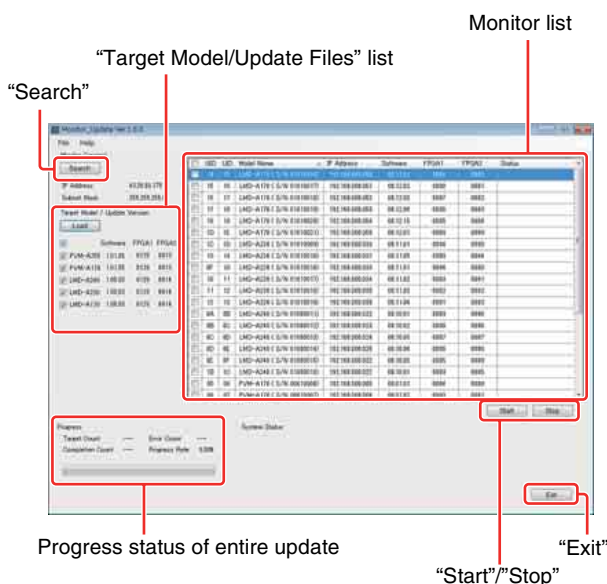
Select “Help”, then “About Monitor\_Update”.

### Note

- Depending on the network connection status of the computer, the network selection screen appears when starting the software. In this case, select the network adapter by following the instructions on the screen.
- If an error message appears when starting the software, click “OK” in the dialog, then quit this software. (For details, refer to page 8.)

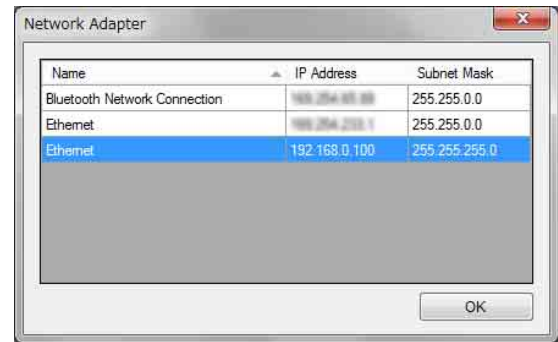
## Updating the monitor

Only the monitor that is in the same subnet as the computer running Monitor\_Update can be updated.



## 1 Click “Search”.

The Network Adapter window is displayed.



## 2 Select the network adapter of the monitor’s network.

Detection of the monitor that is connected to the selected network starts.

Detection completes after about 20 seconds.

Afterwards, the connected monitor appears on the “Target Model/Update Files” list.

### Note

Only the network adapter that shows the IP address and subnet mask after typing “ipconfig /all” in the command prompt, is displayed. If the network adapter that you want to use is not displayed, check the network setting/connection.

## 3 Select the monitor to update its updating file.

Select the monitor to update its updating file from the “Target Model/Update Files” list, then check the checkbox.

### To select all the monitors on the list

Click the checkbox on the top so that all the monitors on the list are checked. If you click the checkbox on the top again, all the monitors on the list are unchecked.

### To select the monitor by specifying the model name

By clicking the checkbox on the model name, only the monitor whose model name is checked appears on the monitor list.

### To sort monitors on the list

By clicking the item on top of the list, monitors are sorted by the selected item.

“Model Name”

“IP Address”

“Subnet Mask”

## 4 Update the updating file.

Click “Load”, then select the folder (UpdateFiles) where the updating file is stored on the updating file selection screen.

The updating file version is displayed on the “Target Model/Update Files” list.

## 5 Start updating of the monitor.

By clicking “Start”, updating for the monitors whose checkbox is checked starts.

The progress status for each monitor is displayed on “Status” of the monitor list while updating.

The progress status for the total updating is displayed on the following.

“Final Count”: The number of target monitors for updating

“Progress Rate”: Progress rate for updating

“Completed Count”: The number of monitors that have completed updating

“Errors”: The number of monitors that have failed updating

### **To stop updating**

By clicking “Stop”, updating stops after the monitor updating in progress is complete.

Wait until the monitor updating in progress is complete. It may take about several minutes to several tens of minutes for updating to complete.

## 6 Quit the software.

Click “Exit”.

## **Selecting Peer to Peer connection**

You can select Peer to Peer connection, if a monitor and a computer are connected by Peer to Peer and the selected network adapter meet the following conditions:

- Only one connected monitor is on the network.
- The IP address is “192.168.0.X” (where X is between 2 - 254).
- The subnet mask is “255.255.255.0”.

# Appendix

## Error Messages

Conditions to be displayed	Message	Causes and remedies
More than one application is active at the same time.	Not allow several application activity.	More than one application may be active. If so, quit one application.
The Monitor_AutoWhite Adjustment is running.	Monitor_AutoWhiteAdjustment working now. Quit it first, and then start this software.	This software cannot start simultaneously with the Monitor_AutoWhiteAdjustment. Use this software after quitting the Monitor_AutoWhiteAdjustment.
The network adapter is not selected.	Network Adapter not selected.	Properly select the network adapter. This software cannot be used on a computer without a network adapter.
The updating file is different.	Update files incorrect. Check file names and load correct files.	The updating file is different. Set the correct updating file. Obtain the correct updating file by downloading.
The required version of .NET Framework is not installed.	To run this application, you first must install one of the following versions of the .NET Framework: v4.0.30319* Contact your application publisher for instructions about obtaining the appropriate version of the .NET Framework.	Install .NET Framework. <b>Hint</b> Normally, the required version of .NET Framework is installed. Install it only when it has not been installed.

\* The figures differ depending on the OS of the computer used.



## Error Codes

When updating fails, the error code appears on “Status” of the monitor list.

Conditions to be displayed	Error code (type)	Causes and remedies
Version (model) checking error has occurred.	Error Code:01_xx*	01 (Connection error)
		02 (Rejection of connection/connection timeout, etc.)
		03 (Transferring error)
		04 (Receiving error)
		11 (Incompatible)
		20 (Exceeds number of connections)
Error of telnet connection for updating has occurred.	Error Code:02_xx*	01 (Connection error)
		02 (Rejection of connection/connection timeout, etc.)
		03 (Transferring error)
		04 (Receiving error)
		20 (Exceeds number of connections)
Error of command transferring for updating has occurred.	Error Code:03_xx*	03 (Transferring error)
		04 (Receiving error)
		07 (Checking timeout)
		08 (Update command returns NG)
		09 (Update command returns value other than OK/NG)
		0A (Exceeds receiving buffer)
FTP copy error has occurred.	Error Code:04_xx*	01 (Connection error)
		02 (Rejection of connection/connection timeout, etc.)
		03 (Transferring error)
		04 (Receiving error)
		10 (File error)
FTP deleting error has occurred.	Error Code:05_xx*	01 (Connection error)
		02 (Rejection of connection/connection timeout, etc.)
		03 (Transferring error)
		04 (Receiving error)

\* “xx” indicates the 2-digit error type.

