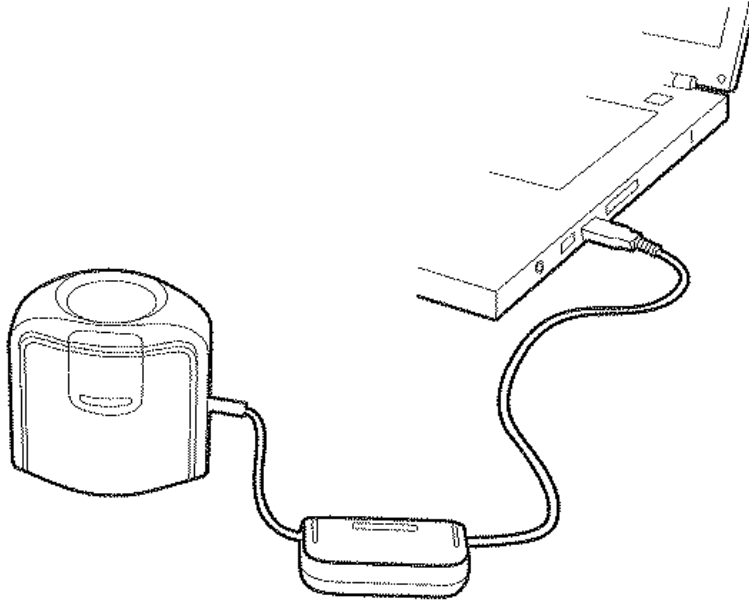


i1 Display Pro ***Manual***

TVlogic

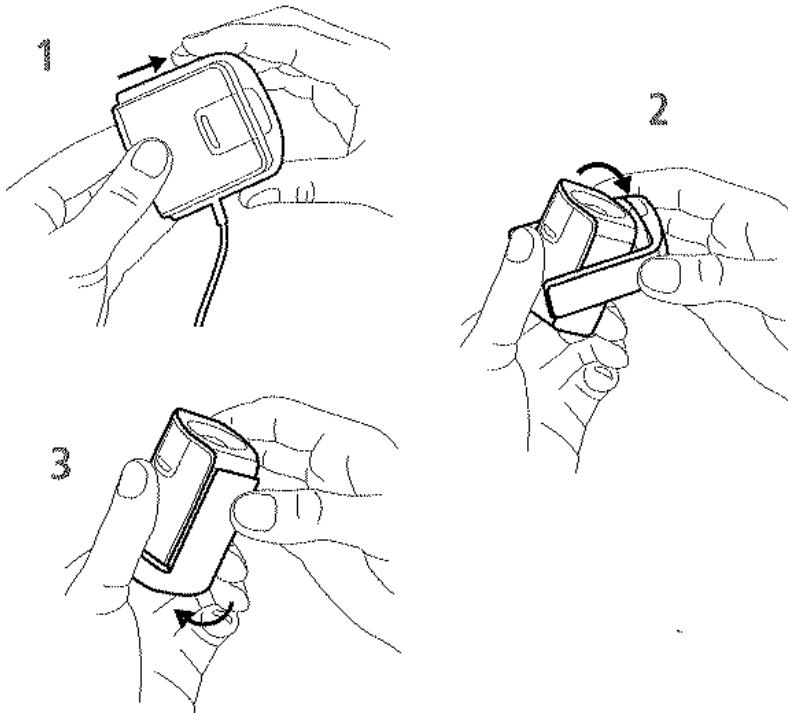
Installation

Attach the i1Display into your computers USB port



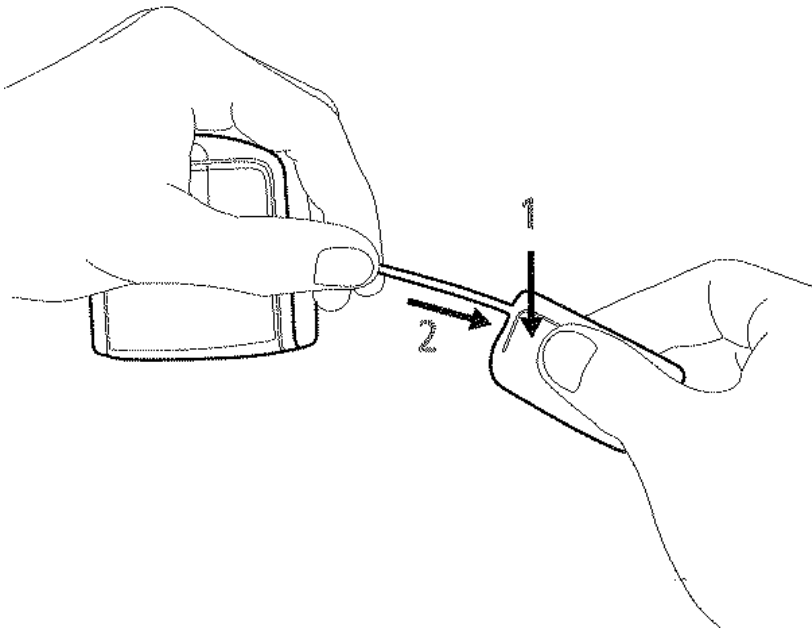
Monitor measurement 1

1. Lift up on ambient diffuser arm.
2. Rotate ambient diffuser arm to rear position.
3. Ambient diffuser arm will snap into place when located in rear position



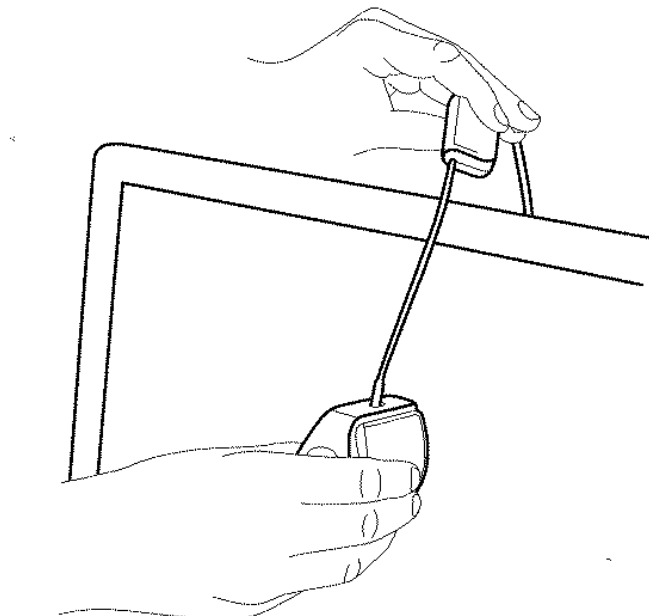
Monitor measurement 2

To adjust the position of the counter weight, depress the button on the counter weight and slide counter weight simultaneously to desired location.



Monitor measurement 3

To mount the device on your display, position the optics in contact with the center of your display. Then position the USB cable and counter weight behind your display.



Monitor measurement 4

Adjust the position of the counter weight according to the size of your display.
Be sure the foam pad on the front of the device sits flat on your display.

