

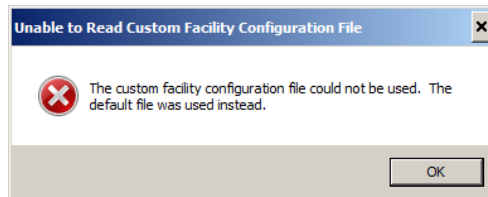
## Do I Need This Update?

### AMP1-MADle

### Release Notes

To install the AMP1-MADle Manager on either a Windows Vista or Windows 7 operating system, right click the installation file named "Wohler MADle Manager vxx.xx Setup.exe." Select the option that says "Run as administrator." For Windows XP, you may simply double-click the file.

The first time the application is run you may get this message:



In this case, a default facility configuration file will be created for you when you press OK, and operation will continue normally. Subsequent starts of the application should not show this message.

As of Version 3.00, administrator privileges are no longer required to run the application. They are only needed for program installation.

### Installation Notes:

Between Version 2.00 and Version 3.00, the installed location of the firmware files, facility files, logs, and manuals was changed to cooperate with Windows UAC (User Account Control) recommendations.

Old Location-

- Windows XP – C:\Program Files\Wohler\MADle Manager
- Windows 7 – C:\Program Files (x86)\Wohler\MADle Manager

New location (both operating systems) –

- C:\Wohler\MADle

The MADle Manager.exe file remains in the same location:

- Windows XP - C:\Program Files\Wohler\MADle Manager
- Windows 7 - C:\Program Files (x86)\Wohler\MADle Manager

When switching from Version 2.00 or earlier to 3.00 or later, please be aware of the following:

- If you wish to keep your facility configuration file:
  1. Copy the **MADle\_Custom\_Facility\_Settings\_V0x.xx.wmfs** file from the old location to your desktop BEFORE uninstalling the old application.
  2. Uninstall the old application.
  3. Install the new application.
  4. Place the facility settings file in the new location (C:\Wohler\MADle\FacilityConfig)
  5. When the application starts for the first time, it will automatically translate the older facility settings file to the latest version, supplying defaults for any new features added.

- If you wish to clean up or keep old log files and preset files:
  1. These files are located in the user subdirectory of the old location noted above.
  2. You may simply delete these files, or, if you wish to keep them, you may transfer them to any convenient location on your hard drive.

## **Version History**

The following version numbers refer to the **Application Version** as reported in the unit's **Version and Ethernet Menu**, and in the AMP1-MADle Manager **Current Unit Version** window. This may or may not correspond to the AMP1-MADle manager version or other firmware versions.

### **Version 3.05 (Update Package E)**

- Remove large warning diamond when unit is accessed via Ethernet, but only when the unit is in the main screen.

### **Version 3.04 (Update Package D)**

- Accommodate change in processor SPI timing requirements to user storage area.

### **Version 3.02 (Update Package C)**

- Bug Fix – Unit now correctly saves menu settings changes after exiting menu system, even when the MADl input is unlocked.

### **Version 3.01 (Update Package B)**

- Added support for new LCD manufacturer.

### **Version 3.00 (Update Package A) - All new features are fully described in the latest manual.**

The highlights are here.

- Additional channel selection option added.
- Support for single-mode fiber interface added.
- USB update support added.
- The installer no longer installs or overwrites the existing Custom Facility Configuration File.
- The locations of the installed files were changed to comply with Windows UAC rules.
- You are now given access to the internet protocol gateway address in both the front panel controls and the Windows GUI.
- Added ability lock individual channels.
- Added low-cut filter option for the speaker outputs.
- Added support for Evertz Magnum control interface.

### **Version 2.00**

- Added support for new LCD.
- Fixed FTP URL issue with change in Wohler servers.

### **Version 1.05**

- Added option for multiple or single channel selection to main screen.
- Made Main FPGA PLL more responsive, reducing THD+N in analog outputs.

### **Version 1.00**

- Initial production release.